

A three-story brick house with a bay window and a small front garden. The house has a green front door and white arched doorways. The garden is enclosed by a brick wall and has a patterned path. A satellite dish is mounted on the side of the house.

Aldreds
Estate Agents

67 Park Road
Lowestoft, NR32 1SP

Asking Price £250,000



67 Park Road

Lowestoft, NR32 1SP

Aldreds are delighted to offer this four bedroom double bay fronted period property situated in this very desirable North Lowestoft location being within walking distance of the Sparrow's Nest park and the North Lowestoft beach. The property is presented to an excellent standard throughout with quality fixtures and fittings the spacious versatile family accommodation includes an entrance hall with a feature galleried staircase, spacious lounge, open plan kitchen/diner, ground floor shower room and utility room along with a separate dining room that could be used as bedroom four. On the first floor there is a split level galleried landing with three separate double bedrooms leading off and a second family bathroom. Benefits also include gas fired central heating, uPVC double glazed windows. Outside there is a very well presented rear garden which is laid to modern patio stones with a garage with up and over door. Early viewing is strongly recommended to appreciate the quality of this outstanding family home.

Wide Entrance Hall

Fitted carpet, coved ceiling, galleried staircase leading to first floor, composite sealed unit double glazed entrance door, radiator, power points, full length understairs storage cupboard.

Lounge

13'3" x 15'4" (4.06 x 4.69)

Fitted carpet, uPVC walk-in bay window, high skirting boards, power points, tv point, original coving, radiator, timber fireplace with marble effect hearth and inset and living flame electric fire.

Formal Dining Room/Bedroom 4

12'11" x 10'1" (3.96 x 3.08)

Fitted carpet, coved ceiling, full length cupboard, radiator, power points, tv point.

Kitchen/Diner

21'9" x 12'3" (6.64 x 3.74)

Laminate flooring, ample space for family size dining table and chairs in the designated dining area, the dining space has a uPVC walk-in bay window, flat plastered and coved ceiling, radiator. The kitchen area has laminate flooring, a full range of quality modern fitted kitchen units, a full range of integrated appliances including fridge/freezer, dishwasher, eye level double electric oven, Bosch ceramic hob, vertical extraction cooker hood, roll top breakfast bar, power points, double stainless sink with single drainer, inset spotlighting, large aspect uPVC window, full length feature radiator.

Rear Hallway

Laminate flooring, uPVC window, uPVC door leading out to rear garden.





Utility Room

Tile effect vinyl flooring, extended work surface, fitted base and wall units, recess for white goods, plumbing for a washing machine, space for a tumble dryer, power points, wall mounted combination boiler, uPVC window.

Shower Room

Ceramic tiled flooring, shower suite comprising of a fully tiled shower cubicle, low level WC, vanity sink unit, fully tiled walls, skylight, flat plastered ceiling, radiator.

Split Level Galleried Landing

Radiator, loft access leading to insulated loft space, full length cupboard, power points.

Bedroom 1

16'1" x 15'9" (4.91 x 4.81)

Fitted carpet, original coving, walk-in uPVC bay window, radiator, power points.

Bedroom 2

10'5" x 13'1" (3.2 x 4.01)

Fitted carpet, uPVC window, radiator, power points, flat plastered and coved ceiling.

Bedroom 3

12'11" x 9'3" (3.96 x 2.83)

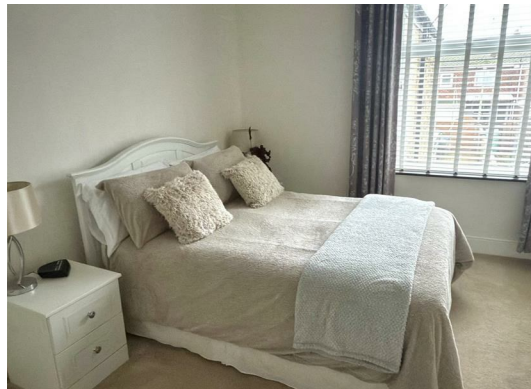
Fitted carpet, radiator, uPVC window, power points, tv point, coved ceiling.

Family Bathroom

Vinyl flooring, white bathroom suite comprising of a panel bath with shower mixer tap, pedestal sink, low level WC, fully tiled walls, uPVC window, radiator, towel rail.

Outside

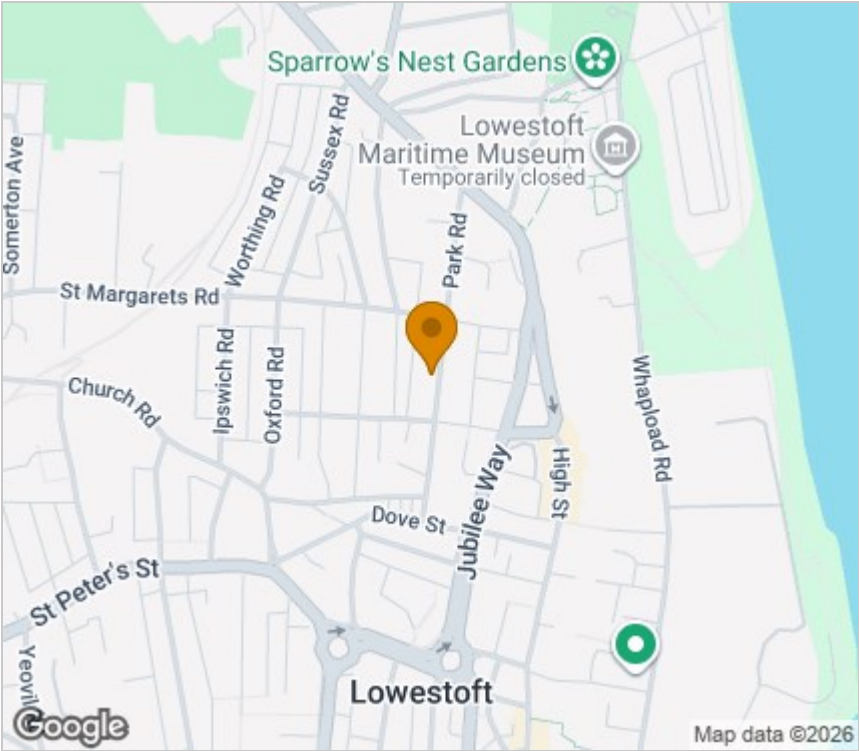
To the front of the property there is an enclosed front garden with original tiled footpath leading to front door. Outside to the rear there is a beautifully presented garden which has recently been laid with patio slabs, shingle borders, garage with up and over door, enclosed by high walls and timber fencing.



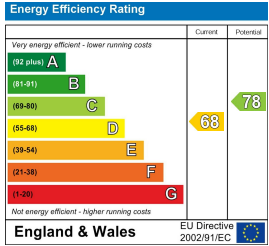
Floor Plan



Area Map



Energy Efficiency Graph



Viewing

Please contact our Aldreds Lowestoft Office on 01502 565432 if you wish to arrange a viewing appointment for this property or require further information.

Disclaimer
These particulars are issued on an understanding that all negotiations shall be conducted through Messrs. Aldreds. Please note: Messrs. Aldreds for themselves and for the vendors or lessors of this property whose agents they are given notice that: 1. Particulars are set out as a general outline only for guidance of intending purchasers or lessees, and do not constitute nor constitute part of, an offer or contract. 2. All descriptions, dimensions, references to condition and necessary permissions for use and occupation, and other details are given without responsibility and any intending purchasers or tenants should not rely on them as statements or representations of fact but must satisfy themselves by inspection or otherwise as to the correctness of each of them. 3. No person in the employment of Messrs. Aldreds has any authority to make or give any representation or warranty whatever in relation to this property. 4. If you are proposing to visit the property and are travelling some distance please check with Aldreds on the issue of availability prior to travelling. 5. Aldreds Property Consultants and associated services may offer additional services to the prospective purchaser for which they will be entitled to receive a commission. Aldreds are pleased to be working with Mortgage Advice Bureau. They're an award-winning mortgage broker with over 1,400 advisers across the UK, and have access to over 12,000 mortgage products from over 90 lenders. Aldreds Estate Agents Ltd receive a commission of £200 on each completed case. Your home may be repossessed if you do not keep up repayments on your mortgage. There may be a fee for mortgage advice. The actual amount you pay will depend upon your circumstances. The fee is up to 1%, but a typical fee is 0.3% of the amount borrowed. Mortgage Advice Bureau is a trading name of Mortgage Seeker Limited which is an appointed representative of Mortgage Advice Bureau Limited and Mortgage Advice Bureau (Derby) Limited which are authorised and regulated by the Financial Conduct Authority. Mortgage Seeker Limited Registered Office: Lovewell Blake, Sixty Six North Quay, Great Yarmouth, Norfolk, NR30 1HE. Registered in England Number: 03721415. 6. Potential purchasers should check with their providers that the broadband and mobile phone coverage they would require is available.

143 London Road North, Lowestoft, Suffolk, NR32 1NE
Tel: 01502 565432 Email: lowestoft@aldreds.co.uk <https://www.aldreds.co.uk/>
Registered in England Reg. No. 08945751 Registered Office: 17 Hall Quay, Great Yarmouth, Norfolk NR30 1HJ
Directors: Mark Duffield B.S.c. FRICS. Dan Crawley MNAEA Paul Lambert MNAEA