



17 Rio Close

, Carlton Colville, NR33 8UR

£235,000



AWAITING INTERNAL PHOTOS BUT AVAILABLE TO VIEW!! We offer this modern three bedroom semi detached house with garden, garage and conservatory. Gas central heating and double glazing. The ground floor also offers an entrance hall, lounge and a kitchen/diner. First floor bathroom. No chain



Entrance Hall

Stairs to landing, door to front, radiator, double glazed window to side aspect

Lounge 13'1" x 13'1" (4 x 4)

Under stair cupboard, double glazed window to front aspect, radiator

Kitchen/Diner 16'3" x 8'0" (4.97 x 2.46)

Base & wall units with worktops, wall mounted gas boiler, radiator, sink, gas hob, electric oven, plumbing for washing machine, double glazed patio doors to conservatory

Conservatory 13'6" x 7'7" (4.12 x 2.32)

Brick based with sealed unit glazing, double glazed French doors to rear garden

Landing

Double glazed window to side aspect

Bedroom 1 11'3" x 8'7" plus recess (3.45 x 2.62 plus recess)

Double glazed window to front aspect, radiator

Bedroom 2 10'2" x 9'7" (3.1 x 2.93)

Double glazed window to rear aspect, radiator

Bedroom 3 7'6" x 7'6" (2.29 x 2.29)

Double glazed window to front aspect, radiator

Bathroom 6'6" x 5'8" (2 x 1.73)

Panel bath, hand basin, low level WC, opaque double glazed window to rear aspect, radiator, part tiled walls

Outside

To the front there is a shingle garden with bushes & shrubs. Driveway to garage, the garage has an up & over door and benefits for power & light. To the rear there is a paved garden with bushes & shrubs

Tenure

Freehold

Services

Mains water, electricity, gas, drainage

Council Tax

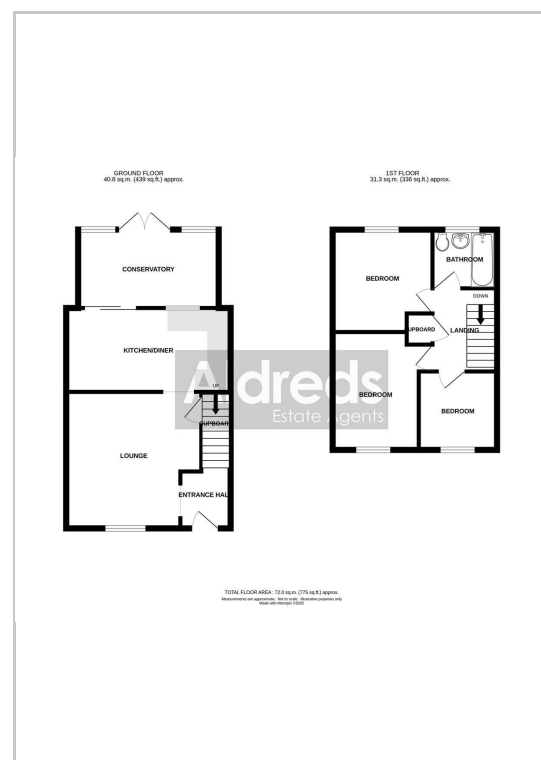
Band B

Ref L2276

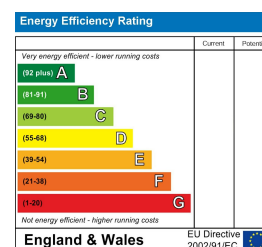
Area Map



Floor Plans



Energy Efficiency Graph



Disclaimer

These particulars are issued on an understanding that all negotiations shall be conducted through Messrs. Aldreds. Please note: Messrs. Aldreds for themselves and for the vendors or lessors of this property whose agents they are given notice that: 1. Particulars are set out as a general outline only for guidance of intending purchasers or lessees, and do not constitute nor constitute part of, an offer or contract. 2. All descriptions, dimensions, references to condition and necessary permissions for use and occupation, and other details are given without responsibility and any intending purchasers or tenants should not rely on them as statements or representations of fact but must satisfy themselves by inspection or otherwise as to the correctness of each of them. 3. No person in the employment of Messrs. Aldreds has any authority to make or give any representation or warranty whatever in relation to this property. 4. If you are proposing to visit the property and are travelling some distance please check with Aldreds on the issue of availability prior to travelling. 5. Aldreds Property Consultants and associated services may offer additional services to the prospective purchaser for which they will be entitled to receive a commission.

Aldreds are pleased to be working with Mortgage Advice Bureau. They're an award-winning mortgage broker with over 1,400 advisers across the UK, and have access to over 12,000 mortgage products from over 90 lenders. Aldreds Estate Agents Ltd receive a commission of £200 on each completed case. Your home may be repossessed if you do not keep up repayments on your mortgage. There may be a fee for mortgage advice. The actual amount you pay will depend upon your circumstances. The fee is up to 1%, but a typical fee is 0.3% of the amount borrowed. Mortgage Advice Bureau is a trading name of Mortgage Seeker Limited which is an appointed representative of Mortgage Advice Bureau Limited and Mortgage Advice Bureau (Derby) Limited which are authorised and regulated by the Financial Conduct Authority. Mortgage Seeker Limited Registered Office: Lovewell Blake, Sixty Six North Quay, Great Yarmouth, Norfolk, NR30 1HE. Registered in England Number: 03721415. 6. Potential purchasers should check with their providers that the broadband and mobile phone coverage they would require is available.

143 London Road North, Lowestoft, Suffolk, NR32 1NE

Tel: 01502 565432 Email: lowestoft@aldreds.co.uk <https://www.aldreds.co.uk/>

Registered in England Reg. No. 08945751 Registered Office: 66 North Quay, Great Yarmouth, Norfolk NR30 1HE Directors: Mark Duffield B.S.c. FRICS. Dan Crawley MNAEA Paul Lambert MNAEA