

Aldreds
Estate Agents

1 Maidstone Road
, Lowestoft, NR32 2AY
£150,000



1 Maidstone Road

, Lowestoft, NR32 2AY

With all three bedrooms and bathroom leading off landing, Aldreds are pleased to offer this well presented and spacious end terrace house in this convenient location. The ground floor offers an entrance hall, two reception rooms, kitchen, rear hallway and a WC. Approx. south facing rear garden. Gas central heating and double glazing. No chain

Entrance Hall

Door to front, stairs to landing, storage cupboard, radiator

Lounge

12'9" x 11'1" max 9'6" min (3.9 x 3.4 max 2.9 min)

Double glazed window to front aspect, radiator

Dining Room

12'9" x 10'7" max (3.9 x 3.23 max)

Double glazed French doors to rear, radiator

Kitchen

12'0" x 9'1" (3.66 x 2.77)

Base & wall units with worktops, double glazed window to side aspect, wall mounted gas boiler, storage cupboard, sink with drainer, plumbing for washing machine, electric cooker point

Rear Hallway

Door to side, storage cupboard

WC

Low level WC

Landing

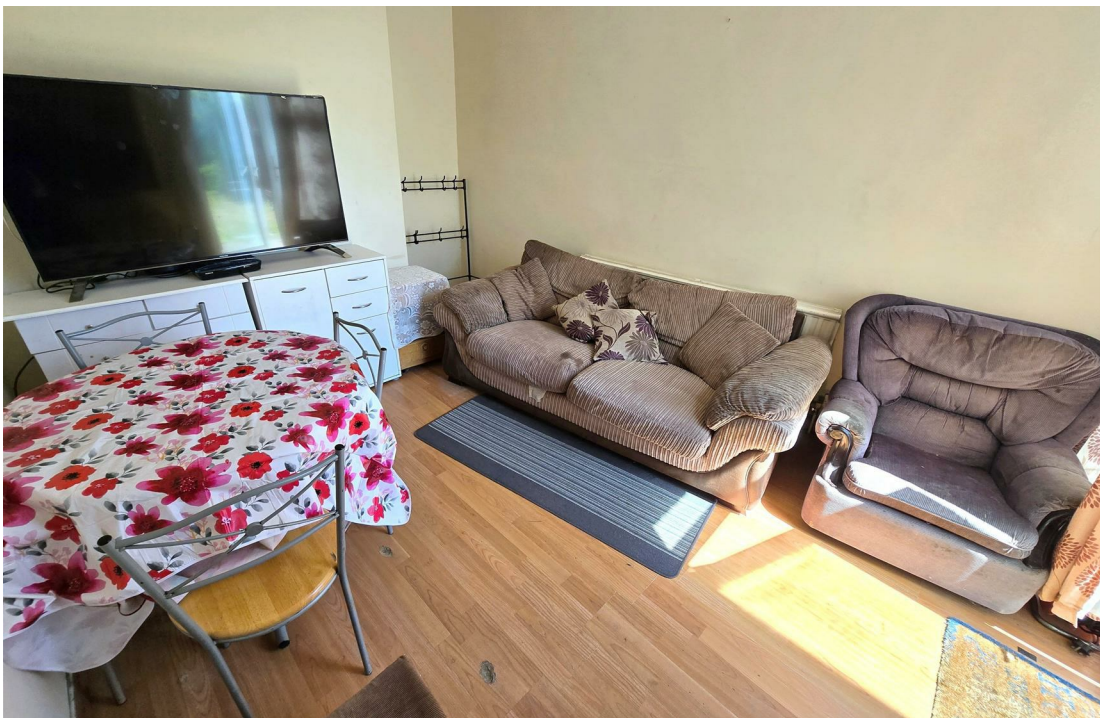
Loft access. Three bedrooms and bathroom leading off

Bedroom 1

14'5" max 12'9" min x 12'9" (4.4 max 3.9 min x 3.9)

Double glazed window to front aspect, radiator, storage cupboard





Bedroom 2

12'9" x 10'5" max 9'2" min (3.9 x 3.2 max 2.8 min)

Double glazed window to rear aspect, radiator

Bedroom 3

9'1" x 5'10" (2.77 x 1.8)

Double glazed window to side aspect, radiator

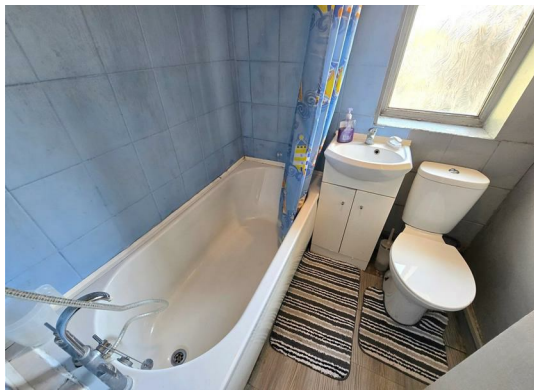
Bathroom

5'6" x 5'5" (1.7 x 1.67)

Panel bath, hand basin, low level WC, opaque double glazed window to side aspect.

Outside

To the front there is a forecourt. To the rear there is an approx. south facing lawned garden with patio, shed, potential to make off road parking in to rear garden subject to any necessary consents.



Tenure

Freehold

Services

Mains water, electricity, gas, drainage

Council Tax

Band A

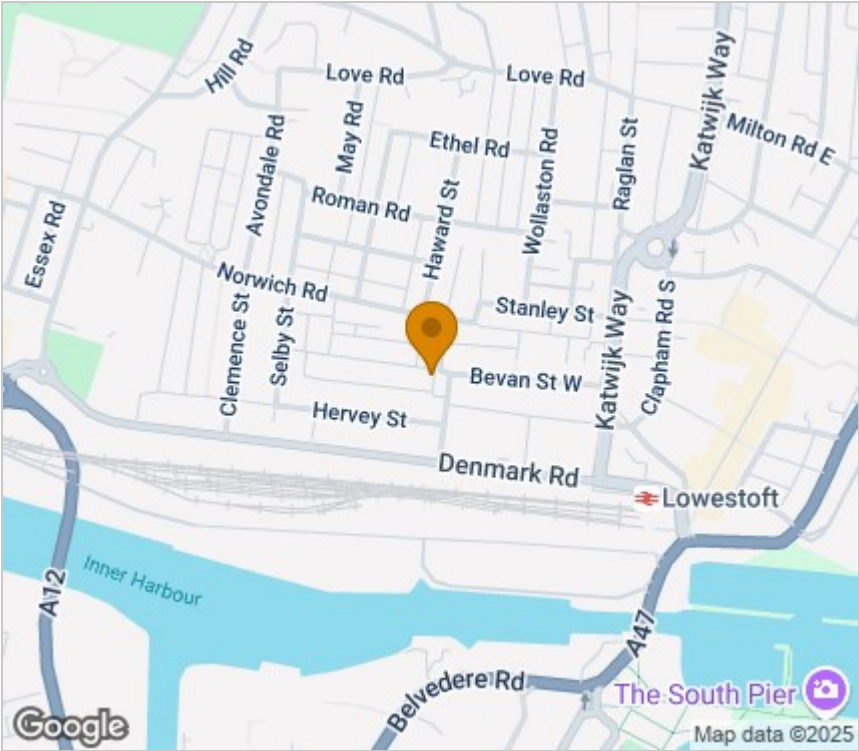
Ref L2272



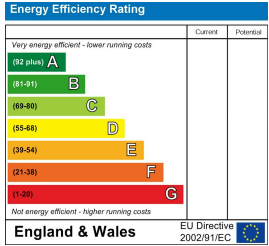
Floor Plan



Area Map



Energy Efficiency Graph



Viewing

Please contact our Aldreds Lowestoft Office on 01502 565432 if you wish to arrange a viewing appointment for this property or require further information.

Disclaimer
These particulars are issued on an understanding that all negotiations shall be conducted through Messrs. Aldreds. Please note: Messrs. Aldreds for themselves and for the vendors or lessors of this property whose agents they are given notice that: 1. Particulars are set out as a general outline only for guidance of intending purchasers or lessees, and do not constitute nor constitute part of, an offer or contract. 2. All descriptions, dimensions, references to condition and necessary permissions for use and occupation, and other details are given without responsibility and any intending purchasers or tenants should not rely on them as statements or representations of fact but must satisfy themselves by inspection or otherwise as to the correctness of each of them. 3. No person in the employment of Messrs. Aldreds has any authority to make or give any representation or warranty whatever in relation to this property. 4. If you are proposing to visit the property and are travelling some distance please check with Aldreds on the issue of availability prior to travelling. 5. Aldreds Property Consultants and associated services may offer additional services to the prospective purchaser for which they will be entitled to receive a commission. Aldreds are pleased to be working with Mortgage Advice Bureau. They're an award-winning mortgage broker with over 1,400 advisers across the UK, and have access to over 12,000 mortgage products from over 90 lenders. Aldreds Estate Agents Ltd receive a commission of £200 on each completed case. Your home may be repossessed if you do not keep up repayments on your mortgage. There may be a fee for mortgage advice. The actual amount you pay will depend upon your circumstances. The fee is up to 1%, but a typical fee is 0.3% of the amount borrowed. Mortgage Advice Bureau is a trading name of Mortgage Seeker Limited which is an appointed representative of Mortgage Advice Bureau Limited and Mortgage Advice Bureau (Derby) Limited which are authorised and regulated by the Financial Conduct Authority. Mortgage Seeker Limited Registered Office: Lovewell Blake, Sixty Six North Quay, Great Yarmouth, Norfolk, NR30 1HE. Registered in England Number: 03721415. 6. Potential purchasers should check with their providers that the broadband and mobile phone coverage they would require is available.