



9 Waterside Holiday Park The Street

Corton, Lowestoft, NR32 5HS

£87,000



9 Waterside Holiday Park The Street

Corton, Lowestoft, NR32 5HS

FRONT LINE HOLIDAY CHALET WITH PANORAMIC SEA VIEWS ** CHAIN FREE ** WELL PRESENTED ** SOLD PART FURNISHED ** LONG LEASE REMAINING ** 3 BED BUNGALOW HOLIDAY HOME FOR SALE ON A WELL MAINTAINED HOLIDAY PARK IN THE COASTAL VILLAGE OF CORTON **

We welcome to the market a fantastic opportunity to purchase a LEASEHOLD holiday chalet Benefitting from being 'front line' with a panoramic sea vista with 3 bedrooms, full uPVC double glazed, uPVC fronted porch with provision and plumbing for a washing machine / tumble dryer / fridge freezer. Offered CHAIN FREE & in good order. Sold part furnished and with its own spacious, gated, wraparound decking area. With open plan living and a kitchen area with standard features and a modern Bathroom with a suite of a panelled bath with shower over, low level W.C, a pedestal wash basin.

This well maintained Park has a heated and covered, beach entry swimming pool that is free to use and a Clubhouse bar / restaurant that is open 12 months of the year.

With many beautiful surroundings and exciting attractions, the popular resorts of Southwold, Lowestoft, Gorleston and Great Yarmouth are easily accessible, with bus stops outside the Park entrance, so you will never be short of something to do. On site facilities include a launderette, a heated, beach style access, covered swimming pool, bar and restaurant, convenience store in the pub opposite, laundrette and more! With all these options of things to do, there is guaranteed fun for the family all year round.

OPEN PLAN LIVING AREA

14'11" x 13'1" (4.55 x 4)

OPEN PLAN KITCHEN

7'4" x 5'1" (2.26 x 1.57)

BEDROOM ONE

10'3" x 8'11" (3.13 x 2.72)





BEDROOM TWO

10'3" x 8'5" (3.13 x 2.57)

BEDROOM THREE

10'3" x 5'10" (3.13 x 1.8)

BATHROOM

6'0" x 6'0" (1.83 x 1.85)

OUTSIDE

Outside features your own gated, large decking area with panoramic sea views that leads onto communal grounds.

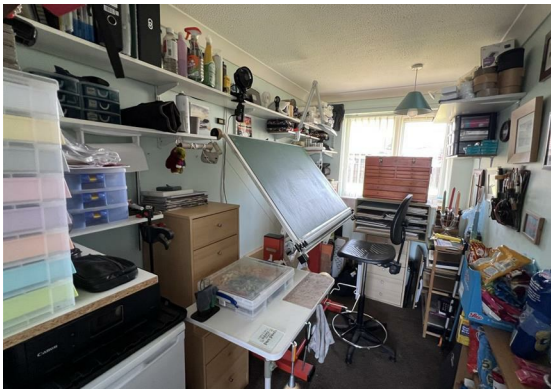
SERVICES & CHARGES for 2025:

Service Charge: £3290.05 (Inclusive of VAT)

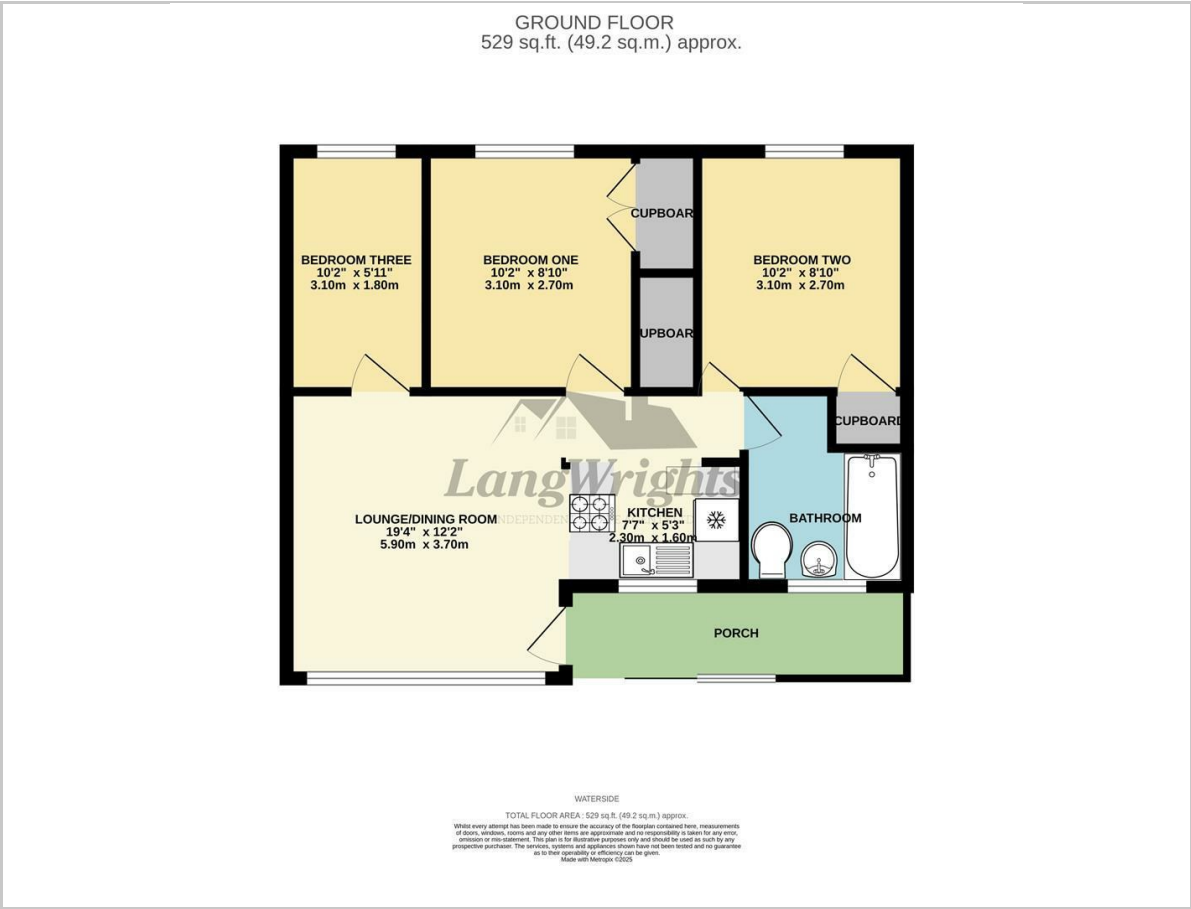
Ground Rent: £ 2071.60 (Inclusive of VAT)

Electricity: as used (billed quarterly)

East Suffolk Council Tax: Band A



Floor Plan



Viewing

Please contact our Aldreds Lowestoft Office on 01502 565432 if you wish to arrange a viewing appointment for this property or require further information.

Disclaimer
These particulars are issued on an understanding that all negotiations shall be conducted through Messrs. Aldreds. Please note: Messrs. Aldreds for themselves and for the vendors or lessors of this property whose agents they are given notice that: 1. Particulars are set out as a general outline only for guidance of intending purchasers or lessees, and do not constitute nor constitute part of, an offer or contract. 2. All descriptions, dimensions, references to condition and necessary permissions for use and occupation, and other details are given without responsibility and any intending purchasers or tenants should not rely on them as statements or representations of fact but must satisfy themselves by inspection or otherwise as to the correctness of each of them. 3. No person in the employment of Messrs. Aldreds has any authority to make or give any representation or warranty whatever in relation to this property. 4. If you are proposing to visit the property and are travelling some distance please check with Aldreds on the issue of availability prior to travelling. 5. Aldreds Property Consultants and associated services may offer additional services to the prospective purchaser for which they will be entitled to receive a commission. Aldreds are pleased to be working with Mortgage Advice Bureau. They're an award-winning mortgage broker with over 1,400 advisers across the UK, and have access to over 12,000 mortgage products from over 90 lenders. Aldreds Estate Agents Ltd receive a commission of £200 on each completed case. Your home may be repossessed if you do not keep up repayments on your mortgage. There may be a fee for mortgage advice. The actual amount you pay will depend upon your circumstances. The fee is up to 1%, but a typical fee is 0.3% of the amount borrowed. Mortgage Advice Bureau is a trading name of Mortgage Seeker Limited which is an appointed representative of Mortgage Advice Bureau Limited and Mortgage Advice Bureau (Derby) Limited which are authorised and regulated by the Financial Conduct Authority. Mortgage Seeker Limited Registered Office: Lovewell Blake, Sixty Six North Quay, Great Yarmouth, Norfolk, NR30 1HE. Registered in England Number: 03721415. 6. Potential purchasers should check with their providers that the broadband and mobile phone coverage they would require is available.

Area Map



Energy Efficiency Graph

