



Aldreds
Estate Agents

66 Burnt Hill Way

Oulton Broad, Lowestoft, NR33 8PD

Asking Price £270,000



66 Burnt Hill Way

Oulton Broad, Lowestoft, NR33 8PD

Aldreds are delighted to offer this detached bungalow situated in this very desirable South Oulton Broad location. The property offers spacious versatile accommodation including entrance hall, spacious lounge, open plan 'L' shaped kitchen/diner, fully heated uPVC conservatory, further inner hallway leading to two double bedrooms and a modern family shower room. Outside to the front there is a long driveway providing ample off road parking for a variety of vehicles which leads to a garage. There is a fully enclosed South facing lawned rear garden with a private side and rear aspect. There are also the benefits of uPVC double glazing and gas fired central heating. Presented to a good standard throughout, Aldreds would recommend an early viewing. No onward chain.

Wide Entrance Hall

Fitted carpet, power points, Upvc entrance door, 2 x full length storage cupboards.

Lounge

11'7" x 16'6" (3.54 x 5.03)

Fitted carpet, flat plastered & coved ceiling with inset spot lighting, T.V point, power points, feature fireplace, full length feature radiator, double sliding patio doors leading to the conservatory.

Conservatory

14'10" x 9'6" (4.53 x 2.91)

Ceramic tiled flooring, pitched glass roof, large aspect Upvc windows, power points, radiator, double patio doors leading out to the rear garden.

Kitchen/Diner

12'11" x 15'1" (max) (3.96 x 4.60 (max))

Ceramic tiled flooring, range of fitted kitchen units, extended work surfaces, double stainless steel sink, recess for white goods, power points, tiled splash backs, ample space for family size dining table and chairs, radiator, coved ceiling, spot lighting, double aspect Upvc windows, Upvc door leading to rear garden, wall mounted energy efficient combination boiler.





Inner Hallway

Fitted carpet, radiator, power points, coved ceiling.

Bedroom 1

9'8" x 11'1" + wardrobe recess (2.96 x 3.40 + wardrobe recess)

Fitted carpet, coved ceiling, Upvc window, power points, radiator, range of fitted wardrobes with sliding doors.

Bedroom 2

10'2" x 8'10" (3.11 x 2.70)

Fitted carpet, coved ceiling, power points, Upvc window, full length feature radiator.

Family Shower Room

Laminate tiled flooring, modern shower suite comprising of a over sized fully tiled shower cubicle, vanity sink unit, low level W.C with enclosed cistern, fully tiled walls, full length heated towel rail, spot lighting, Upvc window.

Outside

Outside To The Front

There is a lawned open plan frontage with long stoned driveway providing ample off road parking for a variety of vehicles leading to a garage.

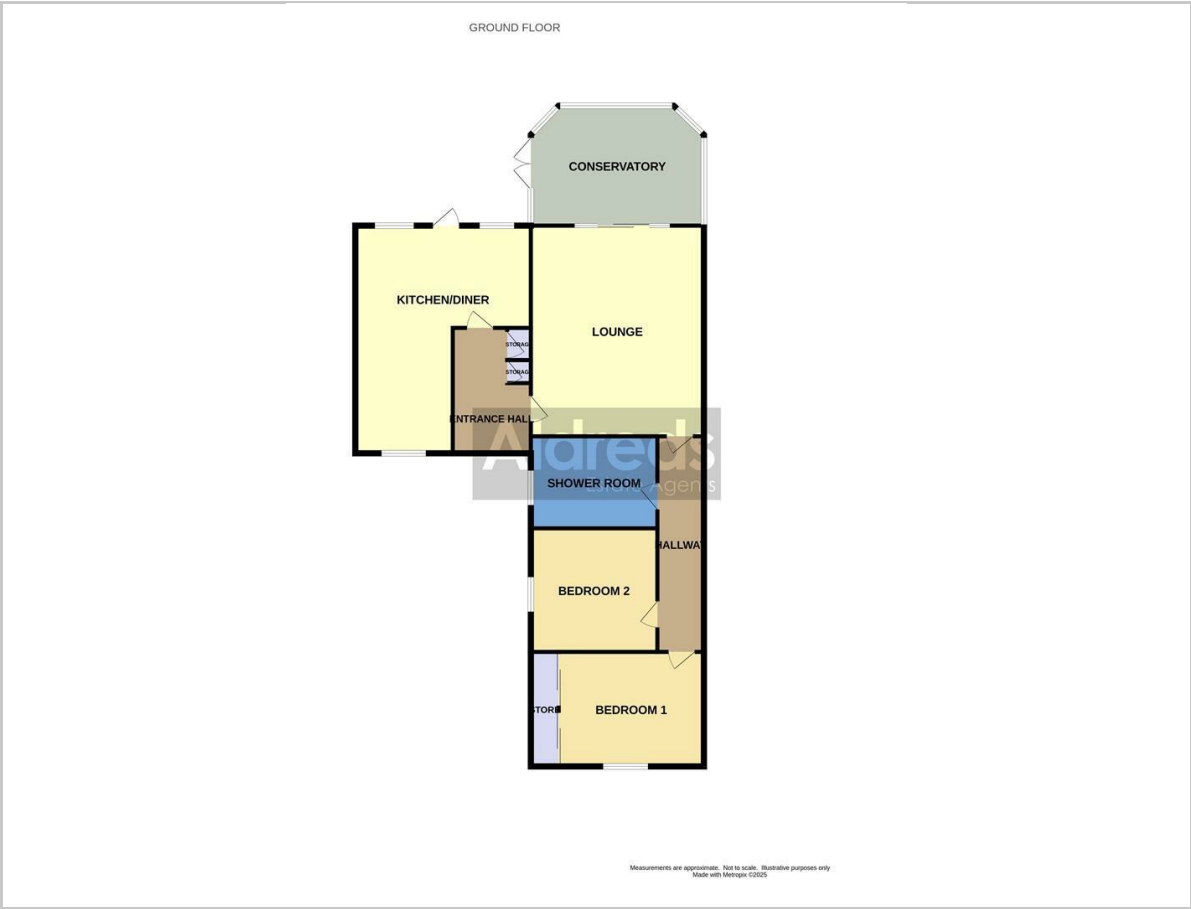
Outside To The Rear

There is a fully enclosed lawned garden with a private rear and side aspect, large brick weave patio seating area, range of flower and shrub borders, greenhouse, side access leading to the front driveway. All enclosed by high brick walls and timber fencing.

Ref: L2313/03/25



Floor Plan

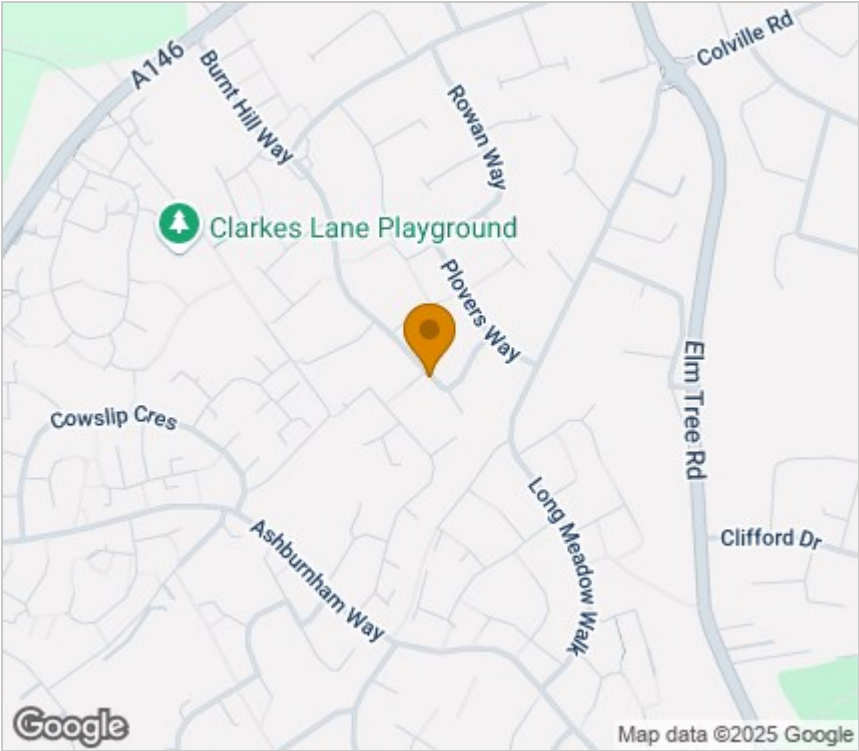


Viewing

Please contact our Aldreds Lowestoft Office on 01502 565432 if you wish to arrange a viewing appointment for this property or require further information.

Disclaimer
These particulars are issued on an understanding that all negotiations shall be conducted through Messrs. Aldreds. Please note: Messrs. Aldreds for themselves and for the vendors or lessors of this property whose agents they are given notice that: 1. Particulars are set out as a general outline only for guidance of intending purchasers or lessees, and do not constitute nor constitute part of, an offer or contract. 2. All descriptions, dimensions, references to condition and necessary permissions for use and occupation, and other details are given without responsibility and any intending purchasers or tenants should not rely on them as statements or representations of fact but must satisfy themselves by inspection or otherwise as to the correctness of each of them. 3. No person in the employment of Messrs. Aldreds has any authority to make or give any representation or warranty whatever in relation to this property. 4. If you are proposing to visit the property and are travelling some distance please check with Aldreds on the issue of availability prior to travelling. 5. Aldreds Property Consultants and associated services may offer additional services to the prospective purchaser for which they will be entitled to receive a commission. Aldreds are pleased to be working with Mortgage Advice Bureau. They're an award-winning mortgage broker with over 1,400 advisers across the UK, and have access to over 12,000 mortgage products from over 90 lenders. Aldreds Estate Agents Ltd receive a commission of £200 on each completed case. Your home may be repossessed if you do not keep up repayments on your mortgage. There may be a fee for mortgage advice. The actual amount you pay will depend upon your circumstances. The fee is up to 1%, but a typical fee is 0.3% of the amount borrowed. Mortgage Advice Bureau is a trading name of Mortgage Seeker Limited which is an appointed representative of Mortgage Advice Bureau Limited and Mortgage Advice Bureau (Derby) Limited which are authorised and regulated by the Financial Conduct Authority. Mortgage Seeker Limited Registered Office: Lovewell Blake, Sixty Six North Quay, Great Yarmouth, Norfolk, NR30 1HE. Registered in England Number: 03721415. 6. Potential purchasers should check with their providers that the broadband and mobile phone coverage they would require is available.

Area Map



Energy Efficiency Graph

