

Aldreds
Estate Agents



155 Lloyds Avenue
Kessingland, Lowestoft, NR33 7TT

Asking Price £195,000



155 Lloyds Avenue

Kessingland, Lowestoft, NR33 7TT

GUIDE PRICE £200,000 - £205,000. *** BEAUTIFUL BUNGALOW SITUATED IN POPULAR SEASIDE VILLAGE *** Aldreds are delighted to offer this immaculately presented 2 bedroomed bungalow situated in this very desirable Kessingland location being within a short walk of Kessingland beach and all local amenities. Brilliantly located in this pedestrianised cul-de-sac the versatile spacious accommodation includes a large lounge, quality fitted kitchen/diner, modern shower room and 2 double bedrooms and to the outside there are generous lawned gardens both at the front and rear with off street parking and garage in a nearby block. There are also the benefits of gas fired central heating and Upvc double glazing. All in all a beautifully presented bungalow offering outstanding value for money. Early viewing is advised. Price Guide £210,000 - £215,000

Entrance Porch

Fitted carpet, Upvc entrance door.

Lounge

17'3" x 11'11" (5.26 x 3.63 (5.25 x 3.64))

Fitted Carpet, coved ceiling, Upvc window, radiator, power points, T.V point, Tiled fireplace with living flame electric fire.

Inner Hallway

Fitted carpet, Full length airing cupboard housing energy efficient combination boiler, loft access leading to insulated loft space.

Bedroom 1

9'3" x 12'3" (2.82 x 3.73)

Fitted carpet, Upvc window, Radiator, power points, T.V point.

Bedroom 2

9'5" x 8'11" (2.87 x 2.72)

Fitted carpet, power points, radiator, Upvc window.





Shower Room

Vinyl flooring, modern shower suite comprising over sized corner shower cubicle, pedestal sink, low level W.C, aqua board splash backs, Upvc window.

Kitchen/Diner

9'11" x 15'3" (3.02 x 4.65 (3.01 x 4.66))

Laminate flooring, full range of modern fitted kitchen units, extended roll top work surfaces, tiled splash backs, recess for white goods including plumbing for washing machine and dishwasher, composite sink with single drainer, ample space for family size dining table and chairs, integral eye level Zanussi stainless steel oven, ceramic hob, glass splash back, extractor fan, Double aspect Upvc windows, Upvc door leading to rear garden, flat plastered ceiling, spotlighting.



Outside

Outside to the front there is an enclosed lawned garden with flower and shrub borders and footpath leading to front door enclosed by low level picket fencing. Outside to the rear there is a lawned garden with patio seating area, full range of flowers and shrubs, timber and felt garden shed, enclosed by high fencing with side access leading to front garden and pedestrian rear access leading to the parking area and garage,



Services And Tenure

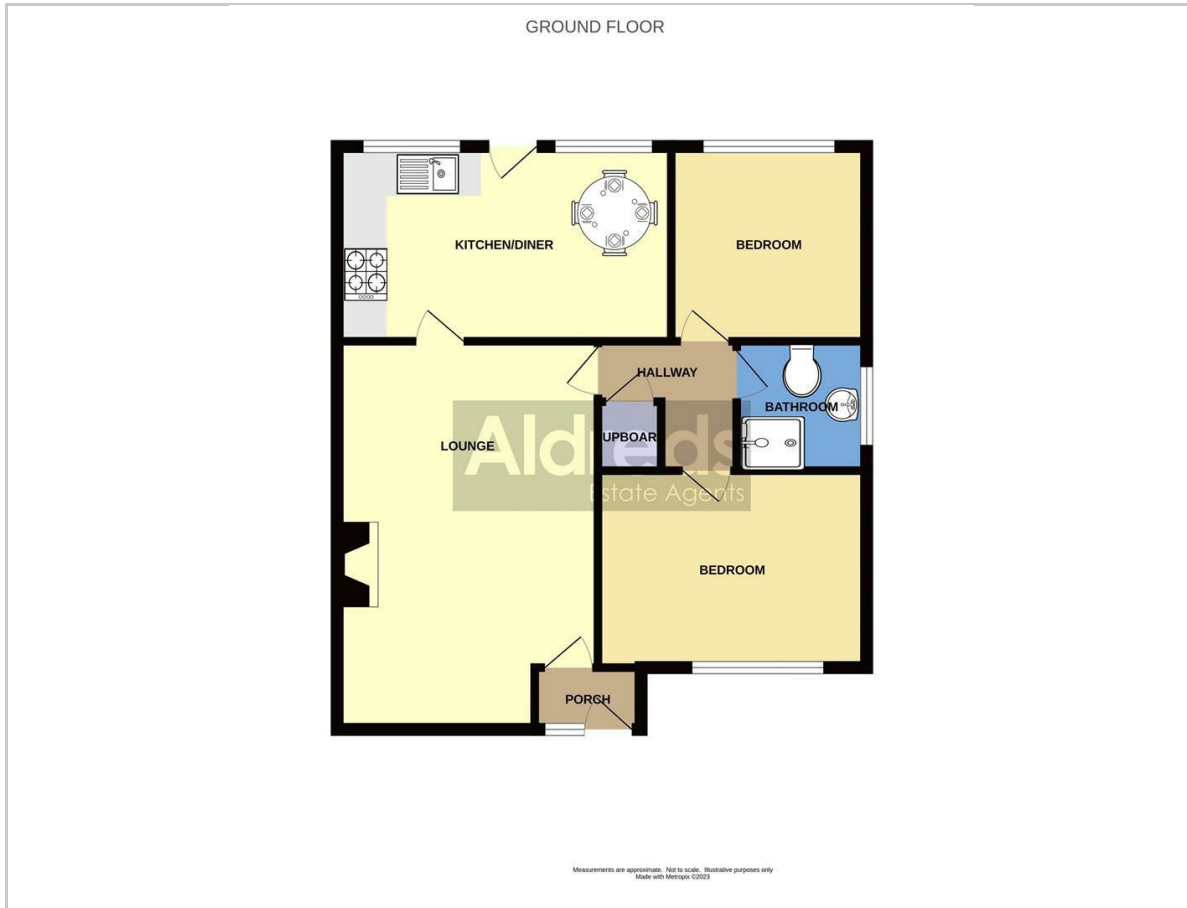
Freehold

Council Tax Band B

Mains Water And Drainage

Mains Electricity And Gas

Floor Plan



Viewing

Please contact our Aldreds Lowestoft Office on 01502 565432 if you wish to arrange a viewing appointment for this property or require further information.

Disclaimer

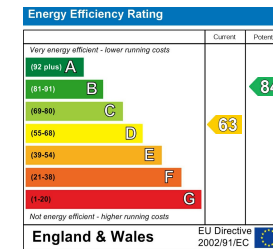
These particulars are issued on an understanding that all negotiations shall be conducted through Messrs. Aldreds. Please note: Messrs. Aldreds for themselves and for the vendors or lessors of this property whose agents they are given notice that: 1. Particulars are set out as a general outline only for guidance of intending purchasers or lessees, and do not constitute nor constitute part of, an offer or contract. 2. All descriptions, dimensions, references to condition and necessary permissions for use and occupation, and other details are given without responsibility and any intending purchasers or tenants should not rely on them as statements or representations of fact but must satisfy themselves by inspection or otherwise as to the correctness of each of them. 3. No person in the employment of Messrs. Aldreds has any authority to make or give any representation or warranty whatever in relation to this property. 4. If you are proposing to visit the property and are traveling some distance please check with Aldreds on the issue of availability prior to traveling. 5. Aldreds Property Consultants and associated services may offer additional services to the prospective purchaser for which they will be entitled to receive a commission.

Aldreds are pleased to be working with Mortgage Advice Bureau. They're an award-winning mortgage broker with over 1,400 advisers across the UK, and have access to over 12,000 mortgage products from over 90 lenders. Aldreds Estate Agents Ltd receive a commission of £200 on each completed case. Your home may be repossessed if you do not keep up repayments on your mortgage. There may be a fee for mortgage advice. The actual amount you pay will depend upon your circumstances. The fee is up to 1%, but a typical fee is 0.3% of the amount borrowed. Mortgage Advice Bureau is a trading name of Mortgage Seeker Limited which is an appointed representative of Mortgage Advice Bureau Limited and Mortgage Advice Bureau (Derby) Limited which are authorised and regulated by the Financial Conduct Authority. Mortgage Seeker Limited Registered Office: Lovewell Blake, Sixty Six North Quay, Great Yarmouth, Norfolk, NR30 1HE. Registered in England Number: 372141.

Area Map



Energy Efficiency Graph



143 London Road North, Lowestoft, Suffolk, NR32 1NE
Tel: 01502 565432 Email: lowestoft@aldreds.co.uk <https://www.aldreds.co.uk/>

Registered in England Reg. No. 08945751 Registered Office: 66 North Quay, Great Yarmouth, Norfolk NR30 1HE Directors: Mark Duffield B.S.c. FRICS. Dan Crawley MNAEA Paul Lambert MNAEA