



53 North Drive, Great Yarmouth, NR30 4EX

Price Guide £625,000-£650,000





53 North Drive

- Delightful Individual Detached Residence
- Large Flexible Living Space
- Indoor Swimming Pool
- Double Glazed Windows
- Huge Potential
- Prime Sea Front Location
- Four Double Bedrooms Over Two Floors
- Double Garage & Sweeping Driveway
- Panoramic Sea Front Views
- A Rare Opportunity - Viewing Recommended

PRICE GUIDE £625,000-£650,000 Aldreds are pleased to offer this rare opportunity to acquire a detached residence in an enviable, prime sea front location providing un-interrupted panoramic views over the sea front. The property has been extended and individually designed with a large flowing living space comprising of an entrance porch serving the reception hall with a feature vaulted ceiling and galleried landing, fantastic living room, sitting room, study/bar, kitchen/breakfast room which is ideal for a family, utility room, cloakroom, two ground floor bedrooms and bathroom adjacent. On the first floor a galleried landing leads to two further double bedrooms and a family bathroom. Attached to the side of the property is an indoor swimming pool with shower and plant room. Outside a sweeping driveway leads to the double size garage with electric door and frontage parking for several cars. The rear garden is low maintenance and faces a westerly direction and provides an ideal outdoor entertaining space adjoining the main house and swimming pool. The property also benefits from gas central heating and double glazed windows. Early viewing of this superb flexible home which is ideal for retirement or a family is strongly recommended.



Entrance Porch

Double glazed entrance doors and internal door to:

Entrance Lobby

Radiator, door leading off to:

Reception Hall

Superb entrance with a stunning vaulted ceiling, open tread staircase to the galleried landing, two radiators, wall lights, fitted carpet, doors leading off to:

Living Room 22'1" maximum x 17'0" maximum (6.74 maximum x 5.19 maximum)

With feature red brick chimney breast and matching side display wall with marble surface and double sided fireplace recess between the living room and study/bar, full width double glazed picture window, with skirting radiators and two additional radiators, tv point, fitted carpet, sliding double glazed patio doors in to:

Study/Bar 13'5" x 11'5" (4.10 x 3.50)

Corner fitted bar, radiator, double glazed window to front aspect, fitted carpet.





Sitting/Games Room 17'0" x 13'7" (5.19 x 4.16)

Accessed from the living room and an ideal overspill to the main living space which would make an ideal games room for a family with double glazed windows to front and rear, double glazed door to rear, two radiators, wall mount tv point, fitted carpet.

Dining Room 11'10" x 11'6" (3.61 x 3.52)

Accessed via double doors from the living room with double glazed patio doors on to the rear garden, radiator, fitted carpet, breakfast bar divider and open access to:

Kitchen/Breakfast Room 16'3" x 11'11" (4.97 x 3.65)

Large well fitted kitchen with quality wall and matching base units with roll top work surfaces over, inset one and a half bowl cast sink with waste system and mixer tap, space and plumbing for a dishwasher, four ring ceramic hob and extractor hood over, built in double electric oven and microwave, part tiled walls, integrated fridge/freezer, double glazed window to rear aspect, radiator, doors leading to:

Utility Room 11'6" x 5'11" (3.52 x 1.82)

Fitted worksurface, tiled walls and flooring, built in airing cupboard, adjacent gas fired boiler, double glazed window to side aspect.



Cloakroom 12'0" x 3'10" (3.66 x 1.19)

New suite comprising vanity unit with inset wash basin and adjacent low level wc with concealed cistern, limed wood finish flooring, tiled walls, frosted double glazed window to side aspect, radiator, wall mounted medicine cabinet/mirror with lighting.

Bathroom 8'3" x 7'11" (2.54 x 2.42)

White suite comprising curved panelled bath with mixer tap, low level wc, vanity unit with inset wash basin, tiled walls, chrome towel rail/radiator, tiled shower cubicle with mains fed shower fitting, frosted double glazed window to side aspect.

Bedroom 3 18'6" x 11'11" (5.64 x 3.64)

Including fitted wardrobe cupboards, double glazed window to front aspect providing sea views.

Bedroom 4 12'7" x 12'1" (3.86 x 3.69)

Including wardrobe cupboards plus additional built in wardrobes, radiator, wall mount tv point, double glazed window to front providing sea views, fitted carpet.

First Floor Galleried Landing

Feature double glazed picture window, radiator, deep walk in airing cupboard housing the copper hot water cylinder, doors leading off to:

Bedroom 1 13'10" x 13'6" (4.24 x 4.13)

Plus Built in wardrobe cupboards to one wall and additional wardrobes, radiator, double glazed window to front aspect providing sea views.

Bedroom 2 13'10" x 12'0" (4.24 x 3.66)

Including fitted wardrobes plus additional built in wardrobe cupboards, radiator, double glazed window to front aspect providing sea views.

Family Bathroom 13'4" x 8'4" (4.07 x 2.56)

Deep inset bath, pedestal wash basin. low level wc, gold coloured tiled walls, towel rail/radiator, frosted double glazed window to side aspect, access in to an eaves storage cupboard.

Rear Lobby

Double glazed door to rear, doors leading to shower and plant rooms and patio doors in to:

Indoor Swimming pool 24'6" x 17'8" (7.48 x 5.41)

With 1.2m deep tiled heated swimming pool (currently empty) tiled surround seating area/walkway with vaulted ceiling over and patio doors on to the rear garden.

Shower Room

With walk in tiled shower cubicle with sensor lighting and mains fed shower fitting, low level wc, pedestal wash basin, radiator, extractor fan and space for changing.

Plant Room/Utility 12'5" x 6'5" (3.80 x 1.97)

With single drainer stainless steel sink unit, boiler, filtration system and pump for the swimming pool, space and plumbing for a washing machine and tumble dryer, double glazed window to rear.

Outside

The property is approached via a sweeping in and out driveway providing parking for several vehicles and access to the attached double garage with electric door, power and lighting, access from the rear to a small inner courtyard leading to the swimming pool. At the rear is a westerly facing private sun trap paved terrace.

Tenure

Freehold

Services

Mains water, electric, gas and drainage.

Council Tax

Great Yarmouth Borough Council - Band 'G'

Location

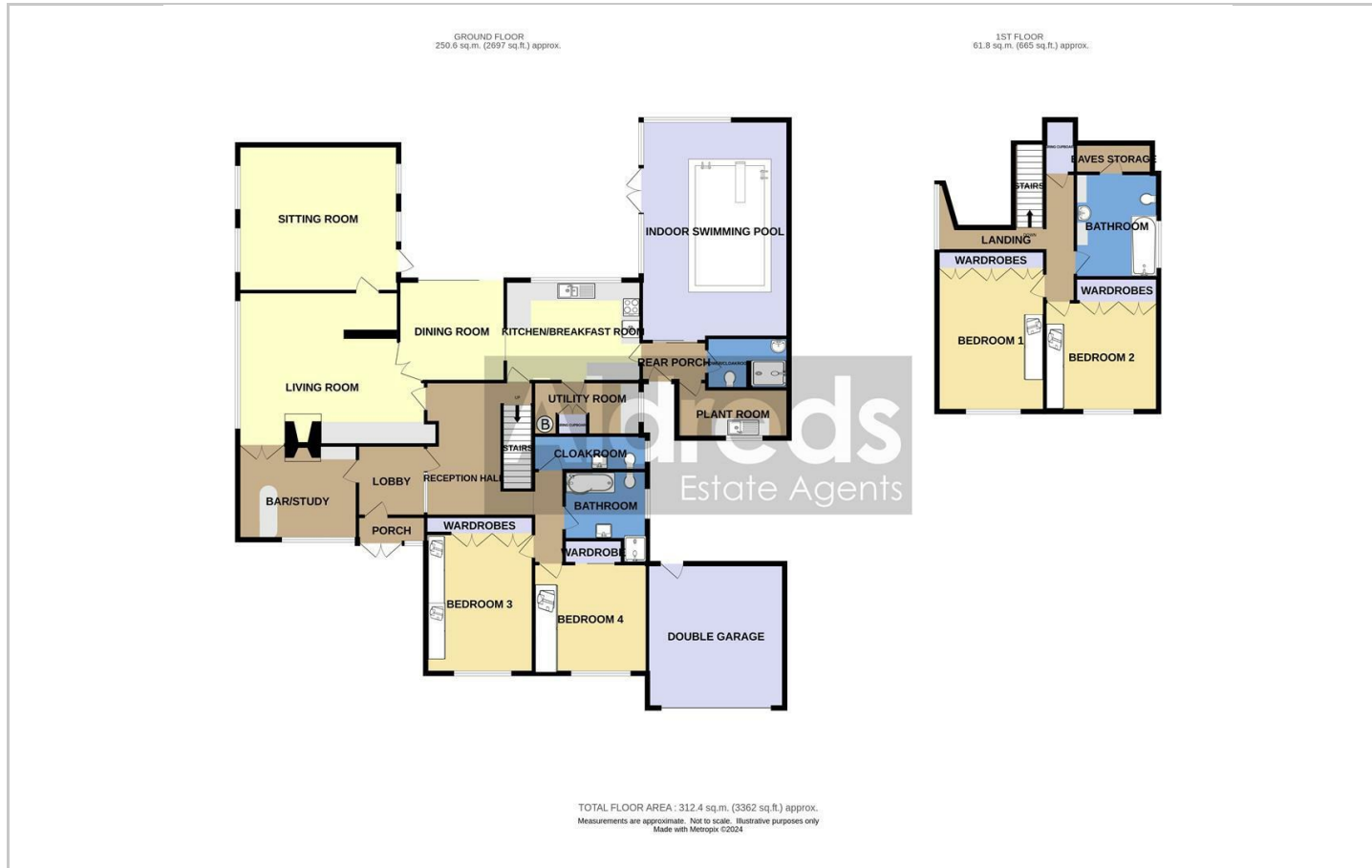
Great Yarmouth is the largest resort on the East Norfolk coast with its Historic Market Place and varied selection of shops. The town has a busy port and the rivers Yare and Bure give access to the Norfolk Broads. There are Museums * Race Course * Greyhound Stadium * Schools for all ages * District Hospital approximately 5 miles south. Bus and rail services connect with Norwich.

Directions

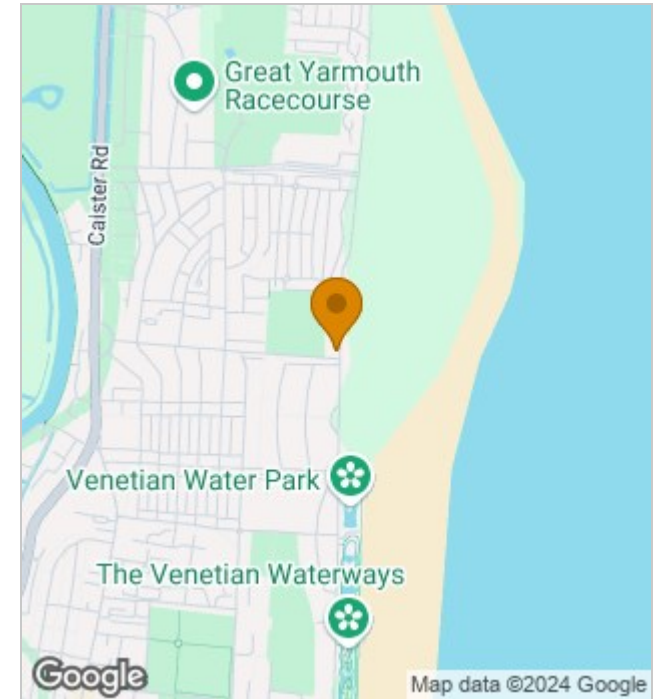
From the Yarmouth office head north along North Quay, continue over the roundabout, continue past the White Swan Public House, continue into Lawn Avenue, continue over the traffic lights into Caister Road, at the next set of traffic lights turn right into Jellicoe Road, continue over the roundabout, on reaching the sea front the property can be found immediately on the left hand side.

Ref: Y11953/01/24/CF

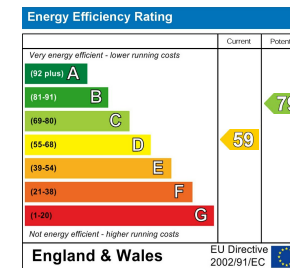
Floor Plans



Location Map



Energy Performance Graph



Viewing

Please contact our Aldreds Great Yarmouth Office on 01493 844891 if you wish to arrange a viewing appointment for this property or require further information.

Disclaimer

These particulars are issued on an understanding that all negotiations shall be conducted through Messrs. Aldreds. Please note: Messrs. Aldreds for themselves and for the vendors or lessors of this property whose agents they are given notice that: 1. Particulars are set out as a general outline only for guidance of intending purchasers or lessees, and do not constitute nor constitute part of, an offer or contract. 2. All descriptions, dimensions, references to condition and necessary permissions for use and occupation, and other details are given without responsibility and any intending purchasers or tenants should not rely on them as statements or representations of fact but must satisfy themselves by inspection or otherwise as to the correctness of each of them. 3. No person in the employment of Messrs. Aldreds has any authority to make or give any representation or warranty whatever in relation to this property. 4. If you are proposing to visit the property and are traveling some distance please check with Aldreds on the issue of availability prior to traveling. 5. Aldreds Property Consultants and associated services may offer additional services to the prospective purchaser for which they will be entitled to receive a commission. Aldreds are pleased to be working with Mortgage Advice Bureau. They're an award-winning mortgage broker with over 1,400 advisers across the UK, and have access to over 12,000 mortgage products from over 90 lenders. Aldreds Estate Agents Ltd receive a commission of £200 on each completed case. Your home may be repossessed if you do not keep up repayments on your mortgage. There may be a fee for mortgage advice. The actual amount you pay will depend upon your circumstances. The fee is up to 1%, but a typical fee is 0.3% of the amount borrowed. Mortgage Advice Bureau is a trading name of Mortgage Seeker Limited which is an appointed representative of Mortgage Advice Bureau Limited and Mortgage Advice Bureau (Derby) Limited which are authorised and regulated by the Financial Conduct Authority. Mortgage Seeker Limited Registered Office: Lovewell Blake, Sixty Six North Quay, Great Yarmouth, Norfolk, NR30 1HE. Registered in England Number: 372141. 6. Potential purchasers should check with their providers that the broadband and mobile phone coverage they would require is available.

17 Hall Quay, Great Yarmouth, Norfolk, NR30 1HJ
Tel: 01493 844891 Email: yarmouth@aldreds.co.uk <https://www.aldreds.co.uk/>

Registered in England Reg. No. 08945751 Registered Office: 66 North Quay, Great Yarmouth, Norfolk NR30 1HE Directors: Mark Duffield B.S.c. FRICS. Dan Crawley MNAEA Paul Lambert MNAEA