

Aldreds
Estate Agents

10 Tyrolean Square
, Great Yarmouth, NR31 0AW
£130,000



10 Tyrolean Square

, Great Yarmouth, NR31 0AW

Sitting in Cobholm, we offer this spacious two bedroom end terrace house with garden. On the ground floor there is an entrance hall, lounge/diner and a kitchen. The first floor offers two bedrooms and a shower room off landing. Gas central heating and double glazing

Entrance Hall

Stairs to landing, door to front, radiator

Lounge/Diner

21'6" max x 11'8" max 8'11" min (6.56 max x 3.56 max 2.74 min)

Double glazed window to front aspect, double glazed window to rear aspect, radiator

Kitchen

10'11" x 8'3" (3.34 x 2.54)

Base & wall units with worktops, gas cooker point, plumbing for washing machine, sink with drainer, door to rear, double glazed window to rear aspect, wall mounted gas boiler, part tiled walls

Landing

Storage cupboard

Bedroom 1

17'0" x 9'2" max (5.2 x 2.81 max)

Double glazed window to front aspect, radiator

Bedroom 2

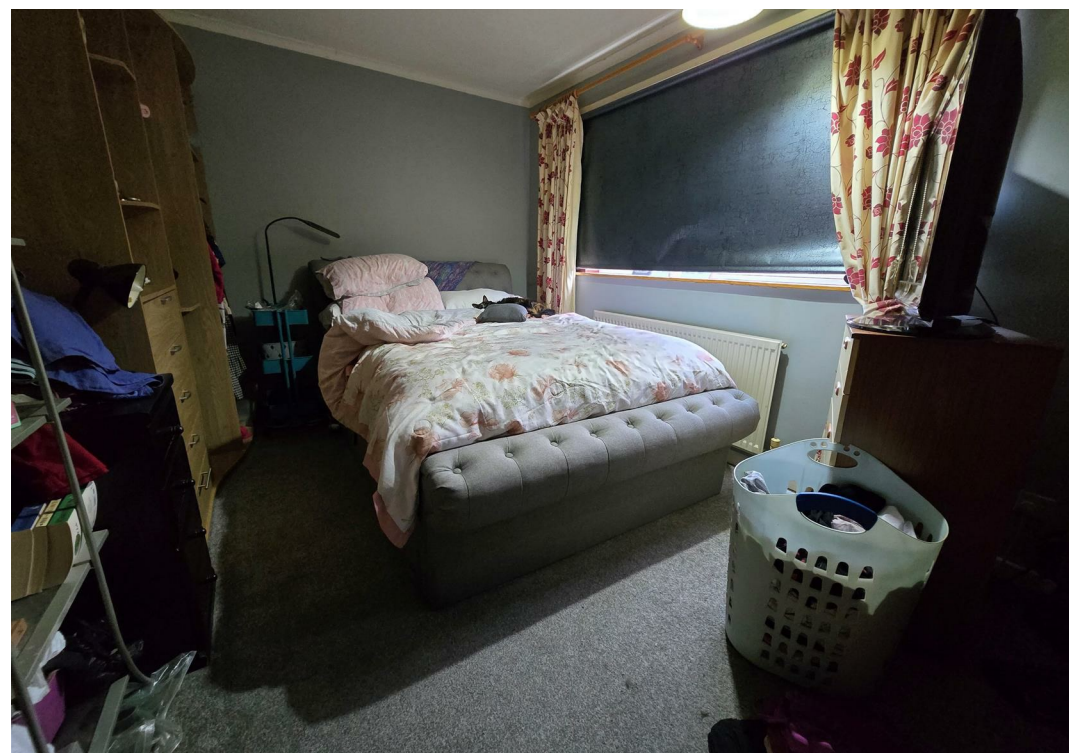
12'4" x 9'10" (3.77 x 3.02)

Double glazed window to rear aspect, radiator

Shower Room

7'6" x 5'6" (2.31 x 1.7)

Flat floor shower, hand basin, low level WC, opaque double glazed window to rear aspect, heated towel rail





Outside

Front garden with steps up to front door. To the rear there is a paved garden with bushes & shrubs, brick shed

Tenure

Freehold

Services

Mains water, electricity, gas, drainage

Council Tax

Band A

Location

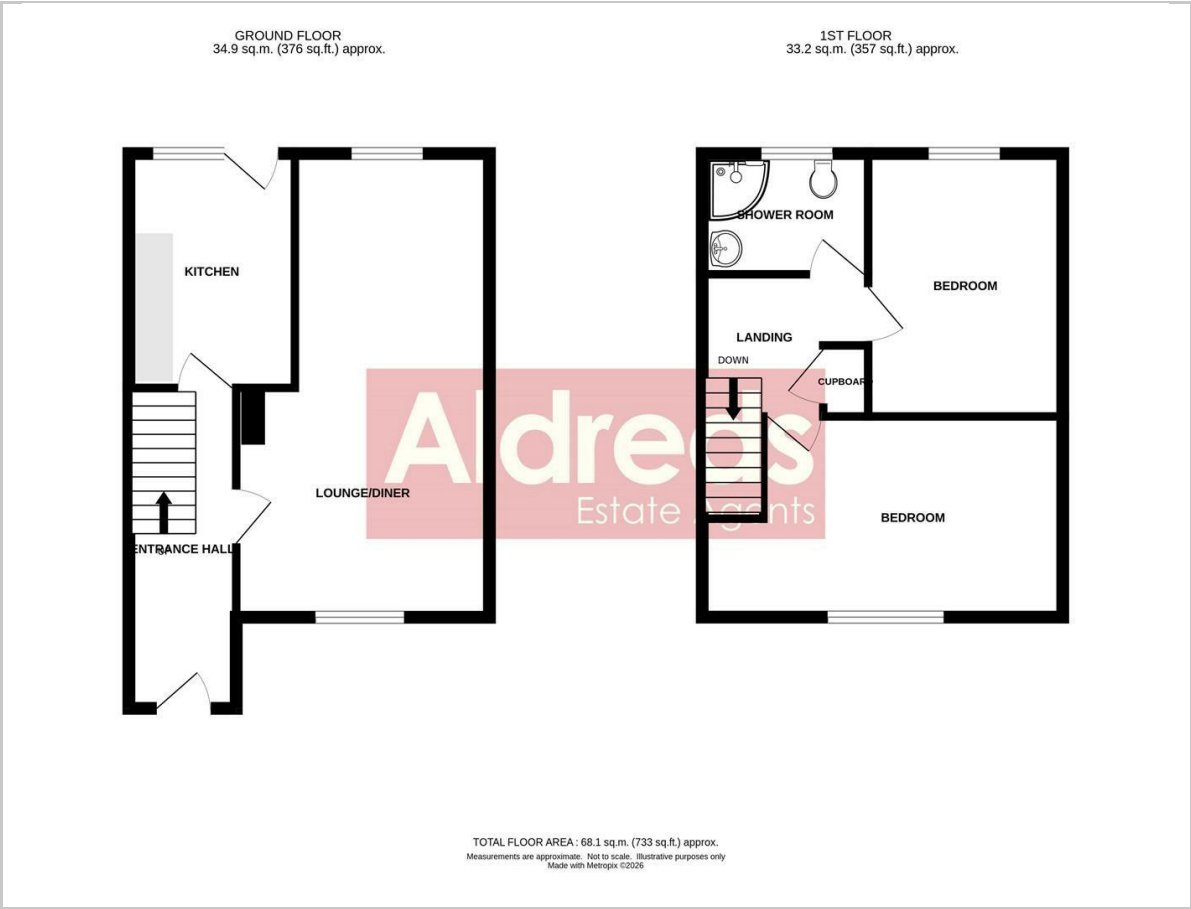
Great Yarmouth is the largest resort on the East Norfolk coast with its Historic Market Place and varied selection of shops. The town has a busy port and the rivers Yare and Bure give access to the Norfolk Broads. There are Museums * Race Course * Greyhound Stadium * Schools for all ages * District Hospital approximately 5 miles south. Bus and rail services connect with Norwich.

Directions

From the Yarmouth office head west over Haven Bridge, at the traffic lights turn right into Mill Road, at the mini roundabout turn right and bear left into Breydon Road, Tyrolea Square can be found on the left and the property on the left hand side.

Ref Y12605/01/26

Floor Plan

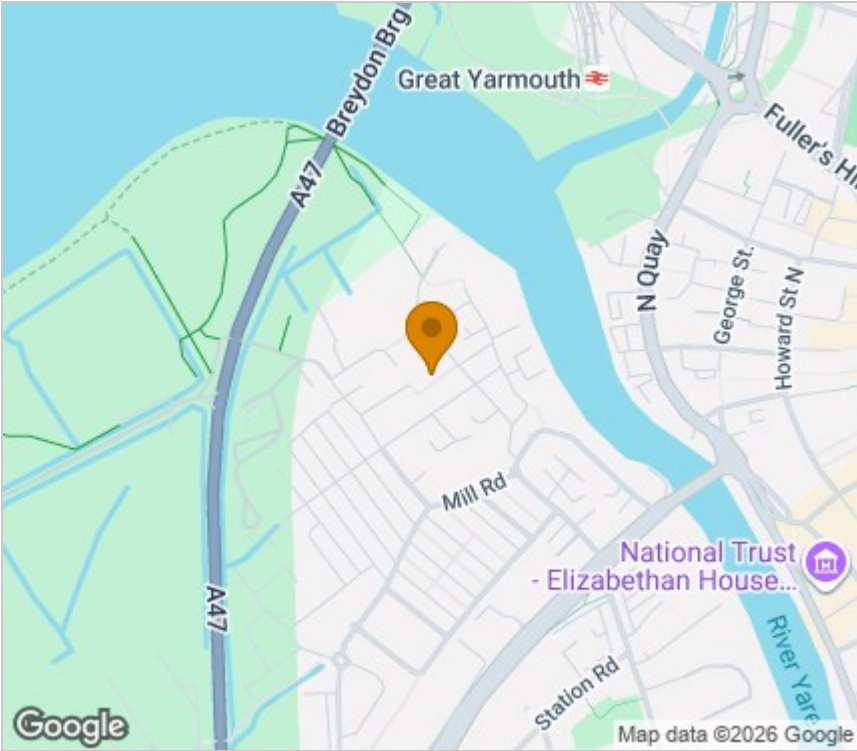


Viewing

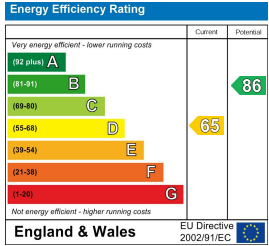
Please contact our Aldreds Great Yamouth Office on 01493 844891 if you wish to arrange a viewing appointment for this property or require further information.

Disclaimer
These particulars are issued on an understanding that all negotiations shall be conducted through Messrs. Aldreds. Please note: Messrs. Aldreds for themselves and for the vendors or lessors of this property whose agents they are given notice that: 1. Particulars are set out as a general outline only for guidance of intending purchasers or lessees, and do not constitute nor constitute part of, an offer or contract. 2. All descriptions, dimensions, references to condition and necessary permissions for use and occupation, and other details are given without responsibility and any intending purchasers or tenants should not rely on them as statements or representations of fact but must satisfy themselves by inspection or otherwise as to the correctness of each of them. 3. No person in the employment of Messrs. Aldreds has any authority to make or give any representation or warranty whatever in relation to this property. 4. If you are proposing to visit the property and are travelling some distance please check with Aldreds on the issue of availability prior to travelling. 5. Aldreds Property Consultants and associated services may offer additional services to the prospective purchaser for which they will be entitled to receive a commission. Aldreds are pleased to be working with Mortgage Advice Bureau. They're an award-winning mortgage broker with over 1,400 advisers across the UK, and have access to over 12,000 mortgage products from over 90 lenders. Aldreds Estate Agents Ltd receive a commission of £200 on each completed case. Your home may be repossessed if you do not keep up repayments on your mortgage. There may be a fee for mortgage advice. The actual amount you pay will depend upon your circumstances. The fee is up to 1%, but a typical fee is 0.3% of the amount borrowed. Mortgage Advice Bureau is a trading name of Mortgage Seeker Limited which is an appointed representative of Mortgage Advice Bureau Limited and Mortgage Advice Bureau (Derby) Limited which are authorised and regulated by the Financial Conduct Authority. Mortgage Seeker Limited Registered Office: Lovewell Blake, Sixty Six North Quay, Great Yarmouth, Norfolk, NR30 1HE. Registered in England Number: 03721415. 6. Potential purchasers should check with their providers that the broadband and mobile phone coverage they would require is available.

Area Map



Energy Efficiency Graph



17 Hall Quay, Great Yarmouth, Norfolk, NR30 1HJ
Tel: 01493 844891 Email: yarmouth@aldreds.co.uk <https://www.aldreds.co.uk/>
Registered in England Reg. No. 08945751 Registered Office: 17 Hall Quay, Great Yarmouth, Norfolk NR30 1HJ
Directors: Mark Duffield B.S.c. FRICS. Dan Crawley MNAEA Paul Lambert MNAEA