



Aldreds
Estate Agents

Development Land Mildred Stone House

Lawn Avenue, Great Yarmouth, NR30 1QS

£620,000

Development Land Mildred Stone House

Lawn Avenue, Great Yarmouth, NR30 1QS

Aldreds are pleased to offer this superb development opportunity in a prime location overlooking the River Bure. The site offers nine plots of three storey houses the majority of which have been designed and orientated to enjoy views over the river and all offering a garage/parking and spacious garden areas. The initial planning conditions have been discharged and the site has been readied for an early commencement. Planning reference 06/21/0525/F - Please contact the office for further information.

Tenure

Freehold

Services

Discharge of conditions within the planning permission 06/22/0522/CD relating to surface water, foul waste details, contamination report and remediation statement, landscaping scheme, boundary treatment details and agricultural statement. All services are believed to be available in the vicinity and a prospective purchaser should satisfy themselves of the location and adequacy of supply.

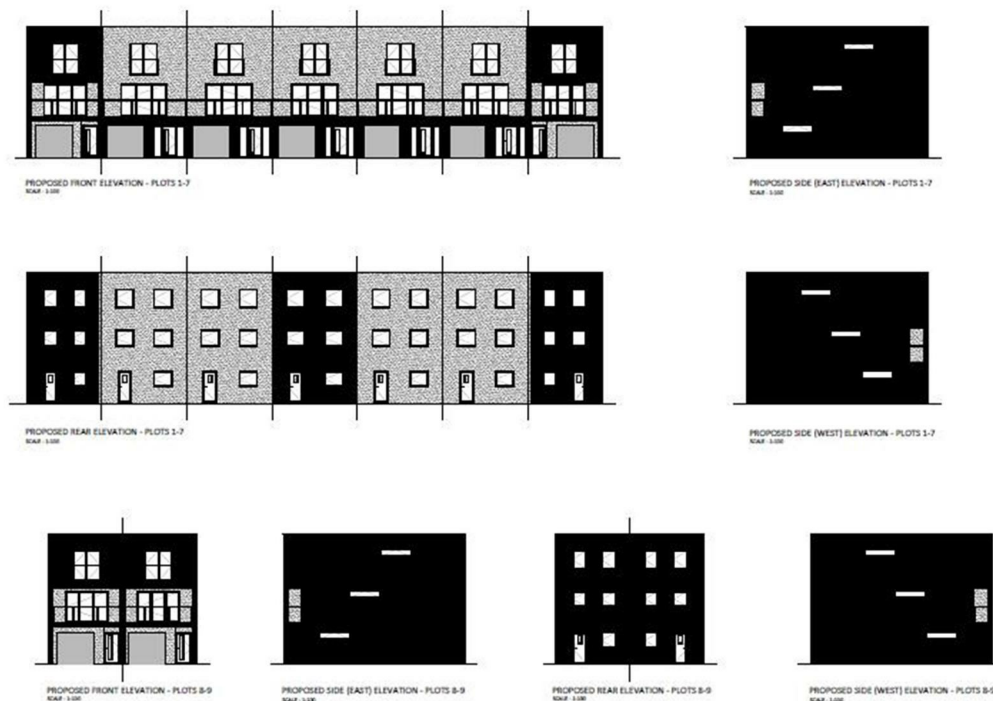
Location

The site overlooks the River Bure close to the town centre. The town of Great Yarmouth is the largest resort on the East Norfolk coast with its Historic Market Place and varied selection of shops. The town has a busy port and the rivers Yare and Bure give access to the Norfolk Broads. There are Museums * Race Course * Greyhound Stadium * Schools for all ages * District Hospital approximately 5 miles south. Bus and rail services connect with Norwich.

Directions

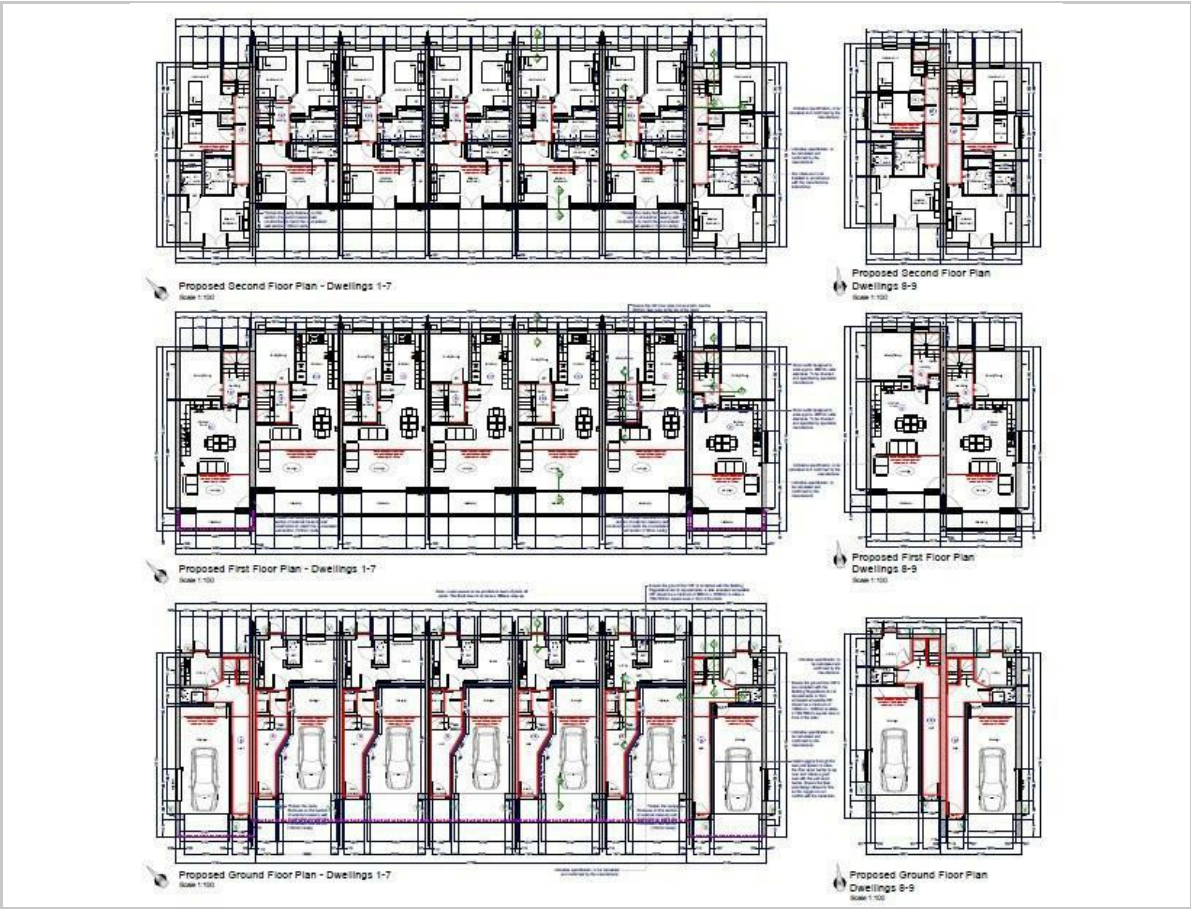
From the Great Yarmouth office head North along North Quay, continue over the roundabout onto Lawn Avenue and the site can be found on the left hand side just past the turning to Tar Works Road.

Ref: Y12521/09/25/CF





Floor Plan

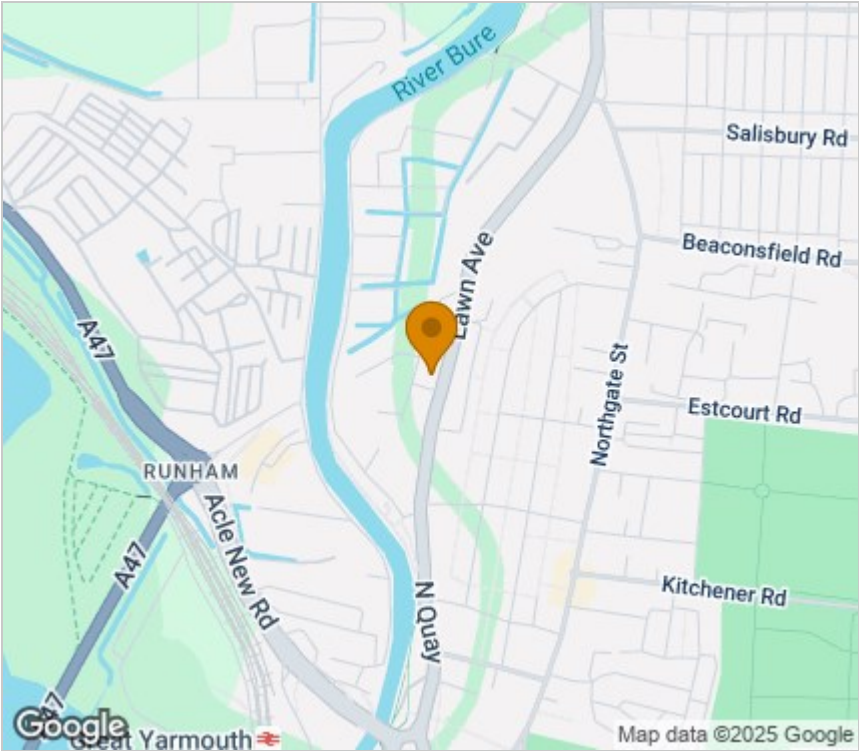


Viewing

Please contact our Aldreds Great Yarmouth Office on 01493 844891 if you wish to arrange a viewing appointment for this property or require further information.

Disclaimer
These particulars are issued on an understanding that all negotiations shall be conducted through Messrs. Aldreds. Please note: Messrs. Aldreds for themselves and for the vendors or lessors of this property whose agents they are given notice that: 1. Particulars are set out as a general outline only for guidance of intending purchasers or lessees, and do not constitute nor constitute part of, an offer or contract. 2. All descriptions, dimensions, references to condition and necessary permissions for use and occupation, and other details are given without responsibility and any intending purchasers or tenants should not rely on them as statements or representations of fact but must satisfy themselves by inspection or otherwise as to the correctness of each of them. 3. No person in the employment of Messrs. Aldreds has any authority to make or give any representation or warranty whatever in relation to this property. 4. If you are proposing to visit the property and are travelling some distance please check with Aldreds on the issue of availability prior to travelling. 5. Aldreds Property Consultants and associated services may offer additional services to the prospective purchaser for which they will be entitled to receive a commission. Aldreds are pleased to be working with Mortgage Advice Bureau. They're an award-winning mortgage broker with over 1,400 advisers across the UK, and have access to over 12,000 mortgage products from over 90 lenders. Aldreds Estate Agents Ltd receive a commission of £200 on each completed case. Your home may be repossessed if you do not keep up repayments on your mortgage. There may be a fee for mortgage advice. The actual amount you pay will depend upon your circumstances. The fee is up to 1%, but a typical fee is 0.3% of the amount borrowed. Mortgage Advice Bureau is a trading name of Mortgage Seeker Limited which is an appointed representative of Mortgage Advice Bureau Limited and Mortgage Advice Bureau (Derby) Limited which are authorised and regulated by the Financial Conduct Authority. Mortgage Seeker Limited Registered Office: Lovewell Blake, Sixty Six North Quay, Great Yarmouth, Norfolk, NR30 1HE. Registered in England Number: 03721415. 6. Potential purchasers should check with their providers that the broadband and mobile phone coverage they would require is available.

Area Map



Energy Efficiency Graph

