

Aldreds
Estate Agents



205 Bermuda Chalet Park Newport Road

Hemsby, Great Yarmouth, NR29 4NN

£35,000



205 Bermuda Chalet Park Newport Road

Hemsby, Great Yarmouth, NR29 4NN

Aldreds are pleased to offer this nicely presented three bedroom, two storey holiday chalet situated on the popular Bermuda Holiday Park. This well appointed chalet comprises an open-plan living/dining/kitchen area, a ground floor bathroom, first floor landing and three bedrooms. The property also benefits from sealed unit double glazing. The chalet is sold furnished and equipped, excluding any personal items of the vendor.

Lounge

13'9" x 11'4" (4.19 x 3.45)

Double glazed entrance door, full height double glazed window to front aspect, stairs rising to landing, power points, tv point, laminate flooring, open plan access to:-

Kitchen

8'8" x 7'5" (2.64 x 2.26)

Double glazed window to rear aspect, fitted kitchen with white gloss wall and matching base units with wood block work surfaces over and tiled splash back, stainless steel sink and drainer, power points, tile effect laminate flooring, electric cooker, door to:

Bathroom

Modern white suite with panelled bath and electric shower fitting over, pedestal wash basin, low level wc, attractive part tiled walls, tile effect laminate flooring, frosted double glazed window to rear aspect.

Landing

Built in airing cupboard housing the hot water cylinder, doors leading off to:

Bedroom 1

11'0" x 8'9" (3.35 x 2.67)

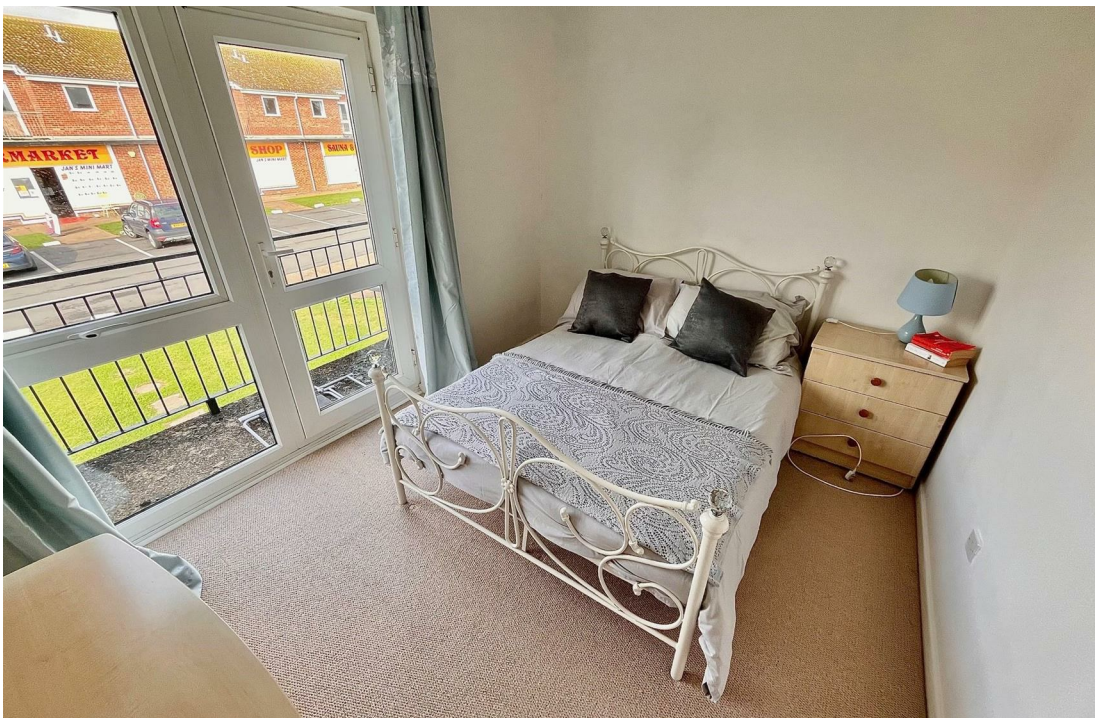
Plus built in wardrobe cupboard, double glazed window and pvc double glazed door on to the balcony.

Bedroom 2

9'0" x 7'7" (2.74 x 2.31 (2.75 x 2.32))

Double glazed window to rear aspect, built in cupboard.





Bedroom 3

6'3" x 6'2" (1.91 x 1.88)

Double glazed window to rear aspect,

Outside

Communal lawned grounds, parking and on site facilities.

Tenure

Leasehold.

99 yrs commenced 1st May 1977

The site fees for 2025 are £1,733.86

There is a meter for the electric which the camp owner empties

Site Open 20th March - 31st October

No dogs allowed

Council Tax

Great Yarmouth Borough Council - Band 'A' (reduction applies for holiday use).

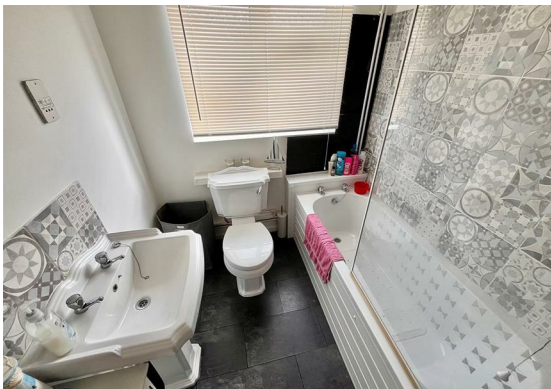
Location

Hemsby is a coastal village approximately 7 miles north of Great Yarmouth. The tourist-based part of the village lies along Beach Road and is commonly known as Hemsby Beach. At the beach end of the road are a number of cafes, shops and amusement arcades, ten-pin bowling, bingo, a play area and many different machines. A variety of seaside-style cafes and restaurants are available, offering sit-down meals, take-away fish and chips and Chinese food. Fun fairs, crazy golf courses and children's rides also feature on a number of sites along the street.

Directions

From the Yarmouth office head north along the A149 Caister Road, continue past the Yarmouth Stadium, at the roundabout turn left onto the Caister Bypass, continue over the next roundabout into Jack Chase Way, continue over the next roundabout into Scratby Road, continue into Yarmouth Road, turn right into Newport Road, turn left into Bermuda Holiday Park where the chalet can be found a short way along on the right hand side opposite the store and amusements.

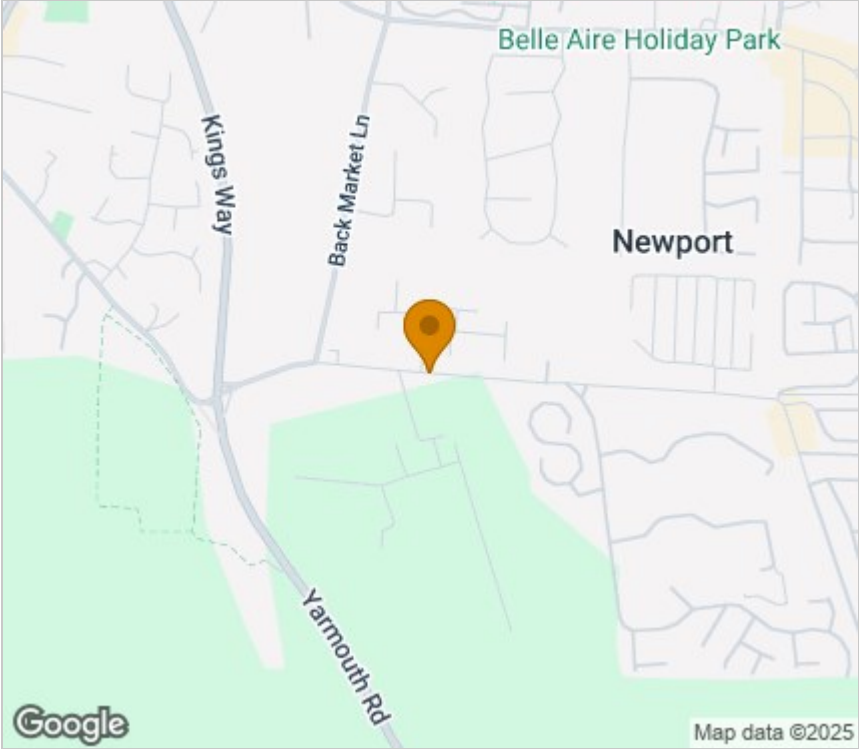
Ref: Y12463/07/25/CF



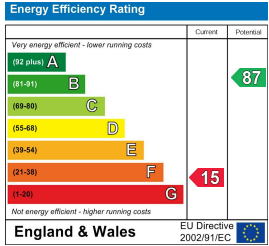
Floor Plan



Area Map



Energy Efficiency Graph



Viewing

Please contact our Aldreds Great Yarmouth Office on 01493 844891 if you wish to arrange a viewing appointment for this property or require further information.

Disclaimer
These particulars are issued on an understanding that all negotiations shall be conducted through Messrs. Aldreds. Please note: Messrs. Aldreds for themselves and for the vendors or lessors of this property whose agents they are given notice that: 1. Particulars are set out as a general outline only for guidance of intending purchasers or lessees, and do not constitute nor constitute part of, an offer or contract. 2. All descriptions, dimensions, references to condition and necessary permissions for use and occupation, and other details are given without responsibility and any intending purchasers or tenants should not rely on them as statements or representations of fact but must satisfy themselves by inspection or otherwise as to the correctness of each of them. 3. No person in the employment of Messrs. Aldreds has any authority to make or give any representation or warranty whatever in relation to this property. 4. If you are proposing to visit the property and are travelling some distance please check with Aldreds on the issue of availability prior to travelling. 5. Aldreds Property Consultants and associated services may offer additional services to the prospective purchaser for which they will be entitled to receive a commission. Aldreds are pleased to be working with Mortgage Advice Bureau. They're an award-winning mortgage broker with over 1,400 advisers across the UK, and have access to over 12,000 mortgage products from over 90 lenders. Aldreds Estate Agents Ltd receive a commission of £200 on each completed case. Your home may be repossessed if you do not keep up repayments on your mortgage. There may be a fee for mortgage advice. The actual amount you pay will depend upon your circumstances. The fee is up to 1%, but a typical fee is 0.3% of the amount borrowed. Mortgage Advice Bureau is a trading name of Mortgage Seeker Limited which is an appointed representative of Mortgage Advice Bureau Limited and Mortgage Advice Bureau (Derby) Limited which are authorised and regulated by the Financial Conduct Authority. Mortgage Seeker Limited Registered Office: Lovewell Blake, Sixty Six North Quay, Great Yarmouth, Norfolk, NR30 1HE. Registered in England Number: 03721415. 6. Potential purchasers should check with their providers that the broadband and mobile phone coverage they would require is available.