

Aldreds
Estate Agents



157 Bermuda Holiday Park Newport Road

Hemsby, Great Yarmouth, NR29 4NN

Asking Price £30,000 Leasehold



157 Bermuda Holiday Park Newport Road

Hemsby, Great Yarmouth, NR29
4NN

Aldreds are pleased to offer this very well presented, westerly facing mid terraced two storey holiday chalet on a popular coastal site with a range of amenities on offer. The chalet would make an ideal investment property with accommodation comprising an open plan living room in to the fitted kitchen with breakfast bar, quality fitted shower room with utilities cupboard, landing, two double bedrooms. The property also benefits from double glazed windows and is being sold furnished. An early viewing is recommended.

Open Plan Living/Dining Room

Double glazed entrance door, full height double glazed window to front aspect, stairs to first floor landing with under stairs cupboard, power points, tv point, wood effect laminate flooring, open plan access with breakfast bar divider to:

Kitchen Area

Range of fitted oak finish kitchen units with wall and matching base units with polished finish work surfaces over, tiled splashbacks, stainless steel sink and drainer, integrated oven, ceramic hob and stainless steel extractor, double glazed window to rear aspect, tiled flooring, door to:

Shower Room

Fitted with a quality white suite comprising low level WC, vanity unit with inset hand wash basin, tiled shower cubicle with electric shower, utilities cupboard with a tumble dryer and washing machine, heated towel rail, tiled flooring, part tiled walls, frosted double glazed window to rear aspect.

First Floor Landing

Airing cupboard housing the hot water heater, doors leading off:-

Bedroom 1

10'11" x 8'2" (3.35 x 2.49)

Double glazed window to front aspect, built in cupboard, power points.

Bedroom 2

8'11" x 7'11" (2.73 x 2.43)

Double glazed window to rear aspect, built in cupboard, wall mount tv, power points.

Outside

The chalet sits in a pleasant west facing position on the edge of this popular site with communal lawned grounds and on site parking with parking available directly to the front of the chalet. The Bermuda Holiday Park offers a range of shops, arcade and swimming pool.





Tenure

Leasehold.

99 yrs from 1st May 1977.

Site fees for 2024 - £1707.00

Site open 20th March - 31st October

NO DOGS allowed

Services

Mains water, electric and drainage

Council Tax

Great Yarmouth Borough Council - Band 'A'

Location

Hemsby is a coastal village approximately 7 miles north of Great Yarmouth. The tourist-based part of the village lies along Beach Road and is commonly known as Hemsby Beach. At the beach end of the road are a number of cafes, shops and amusement arcades, ten-pin bowling, bingo, a play area and many different machines. A variety of seaside-style cafes and restaurants are available, offering sit-down meals, take-away fish and chips and Chinese food. Fun fairs, crazy golf courses and children's rides also feature on a number of sites along the street.

Directions

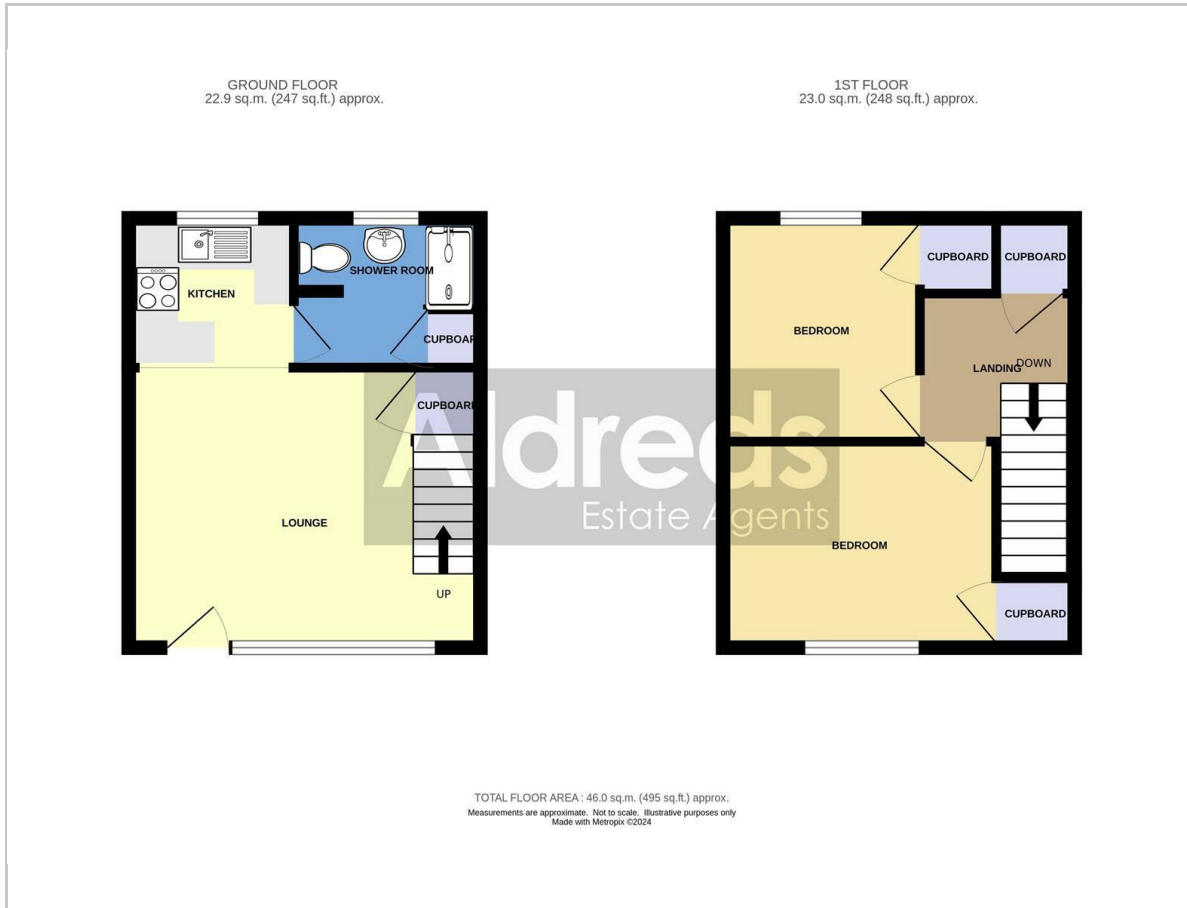
From the Yarmouth office head north along the A149 Caister Road, continue past the Yarmouth Stadium, at the roundabout turn left onto the Caister Bypass, continue over the next roundabout into Jack Chase Way, continue over the next roundabout into Scratby Road, continue into Yarmouth Road, turn right into Newport Road, turn left into the Bermuda Holiday Park, continue towards the end of the road where the chalet can be located directly ahead.

EPC Rating - E (44)

Ref: Y12174/07/24/CF



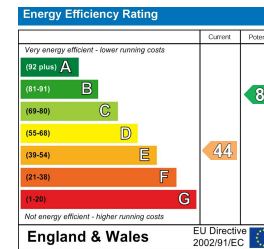
Floor Plan



Area Map



Energy Efficiency Graph



Viewing

Please contact our Aldreds Great Yarmouth Office on 01493 844891 if you wish to arrange a viewing appointment for this property or require further information.

Disclaimer

These particulars are issued on an understanding that all negotiations shall be conducted through Messrs. Aldreds. Please note: Messrs. Aldreds for themselves and for the vendors or lessors of this property whose agents they are given notice that: 1. Particulars are set out as a general outline only for guidance of intending purchasers or lessees, and do not constitute nor constitute part of, an offer or contract. 2. All descriptions, dimensions, references to condition and necessary permissions for use and occupation, and other details are given without responsibility and any intending purchasers or tenants should not rely on them as statements or representations of fact but must satisfy themselves by inspection or otherwise as to the correctness of each of them. 3. No person in the employment of Messrs. Aldreds has any authority to make or give any representation or warranty whatever in relation to this property. 4. If you are proposing to visit the property and are travelling some distance please check with Aldreds on the issue of availability prior to travelling. 5. Aldreds Property Consultants and associated services may offer additional services to the prospective purchaser for which they will be entitled to receive a commission.

Aldreds are pleased to be working with Mortgage Advice Bureau. They're an award-winning mortgage broker with over 1,400 advisers across the UK, and have access to over 12,000 mortgage products from over 90 lenders. Aldreds Estate Agents Ltd receive a commission of £200 on each completed case. Your home may be repossessed if you do not keep up repayments on your mortgage. There may be a fee for mortgage advice. The actual amount you pay will depend upon your circumstances. The fee is up to 1%, but a typical fee is 0.3% of the amount borrowed. Mortgage Advice Bureau is a trading name of Mortgage Seeker Limited which is an appointed representative of Mortgage Advice Bureau Limited and Mortgage Advice Bureau (Derby) Limited which are authorised and regulated by the Financial Conduct Authority. Mortgage Seeker Limited Registered Office: Lovewell Blake, Sixty Six North Quay, Great Yarmouth, Norfolk, NR30 1HE. Registered in England Number: 03721415. 6. Potential purchasers should check with their providers that the broadband and mobile phone coverage they would require is available.

17 Hall Quay, Great Yarmouth, Norfolk, NR30 1HJ
Tel: 01493 844891 Email: yarmouth@aldreds.co.uk <https://www.aldreds.co.uk/>

Registered in England Reg. No. 08945751 Registered Office: 66 North Quay, Great Yarmouth, Norfolk NR30 1HE Directors: Mark Duffield B.S.c. FRICS. Dan Crawley MNAEA Paul Lambert MNAEA