



138 Florida Park Back Market Lane

Hemsby, Great Yarmouth, NR29 4HW

£30,000



138 Florida Park Back Market Lane

Aldreds are pleased to offer this superbly presented 2 bedroom semi detached bungalow sitting on the popular Florida Holiday Park in the coastal village of Hemsby which has been run as a successful holiday let. This chalet offers accommodation including open plan lounge/dining/kitchen area, two bedrooms, bathroom and separate wc. The property benefits from uPVC double glazed windows and has electric heaters. Outside there are communal lawned grounds and parking nearby. Close to local amenities. Offered with no onward chain.

Open Plan Living/Dining/Kitchen

Living/Dining Area

12'7" x 12'6" (3.84 x 3.83)

Part double glazed uPVC entrance door to front, double glazed window to front aspect, wall mount tv, carpeted flooring, wall mount plasma style electric fire, fitted breakfast bar seating area, open access to:-

Kitchen Area

7'1" x 6'0" (2.16 x 1.83)

Double glazed window to side aspect, range of wood grain fitted kitchen units with roll top work surface, integrated electric oven and hob, stainless steel sink and drainer, part tiled walls, recess with fridge, tile effect vinyl flooring.

Bedroom 1

9'8" x 9'4" (2.97 x 2.87)

Plus built in storage cupboard, double glazed window to rear aspect, wall mounted electric heater, bunk beds, carpeted flooring, drawers.

Bedroom 2

9'8" x 9'4" (2.97 x 2.87)

Plus built in storage cupboard, double glazed window to rear aspect, double bed, carpeted flooring.

Bathroom

White suite with panel bath and new electric shower over, new vanity unit with wash basin, part tiled walls, frosted double glazed window to side aspect, tiled flooring, door to:

Cloakroom

White low level wc, frosted double glazed window to side aspect, tiled flooring.

Outside

The chalet sits in communal lawned gardens which face a westerley direction with parking nearby.





Tenure

Leasehold.

99 years from 06.04.1969.

Site opens from 1st March to 31st October.

Ground rent and maintenance/service charges for 2024 TBC

No dogs allowed.

Services

Mains water, electric and drainage.

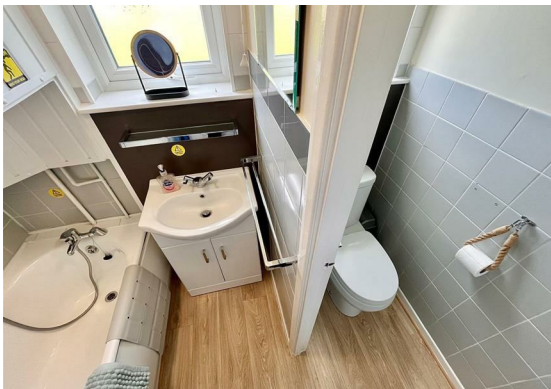
Location

Hemsby is a coastal village approximately 7 miles north of Great Yarmouth. The tourist-based part of the village lies along Beach Road and is commonly known as Hemsby Beach. At the beach end of the road are a number of cafes, shops and amusement arcades, ten-pin bowling, bingo, a play area and many different machines. A variety of seaside-style cafes and restaurants are available, offering sit-down meals, take-away fish and chips and Chinese food. Fun fairs, crazy golf courses and children's rides also feature on a number of sites along the street.

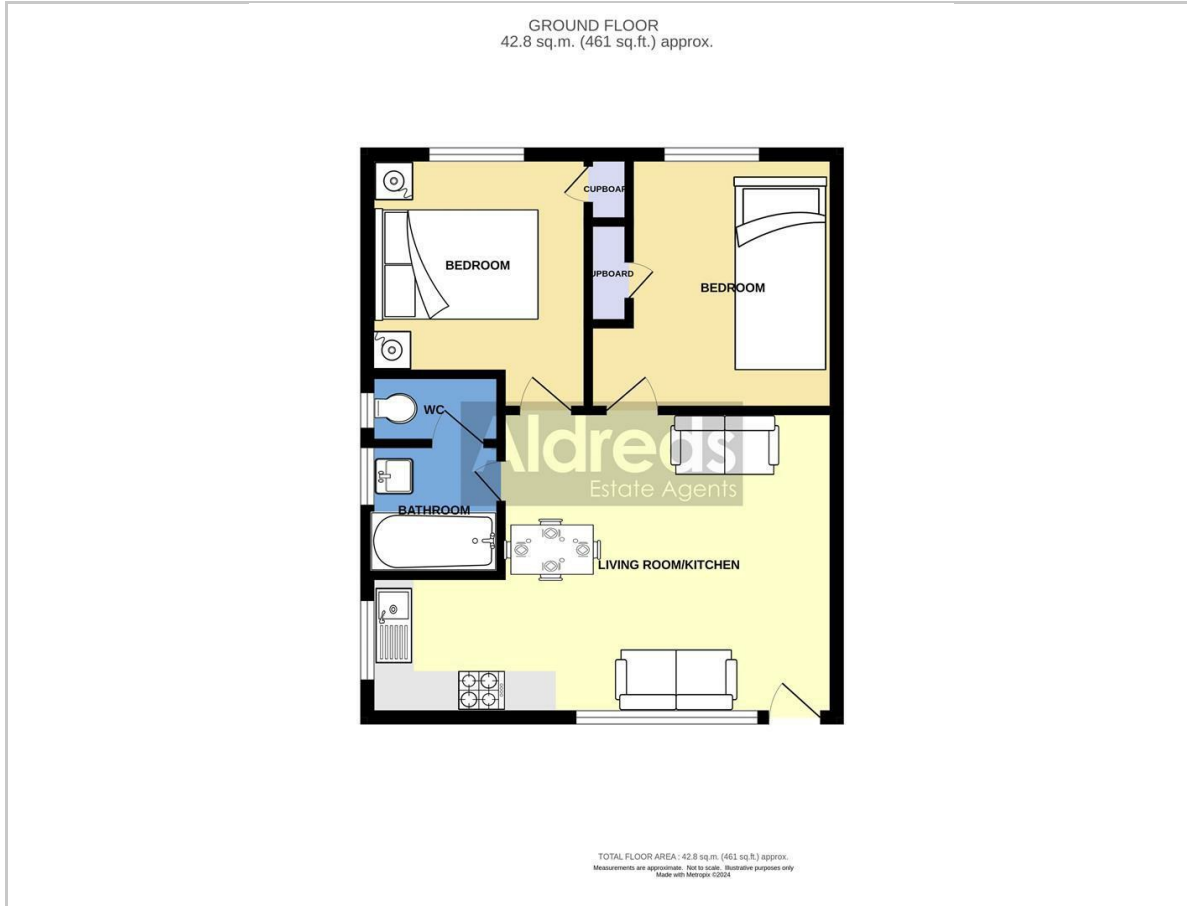
Directions

From the Yarmouth office head north along the A149 Caister Road, continue past the Yarmouth Stadium, at the roundabout turn left onto the Caister Bypass, continue over the next roundabout into Jack Chase Way, continue over the next roundabout into Scratby Road, continue into Yarmouth Road, turn right into Newport Road, continue for approximately 200 yards turn left into Market Lane, take the second turning on the right into the Florida Holiday Park, follow the road slightly to the right where the chalet can be found on the left hand side.

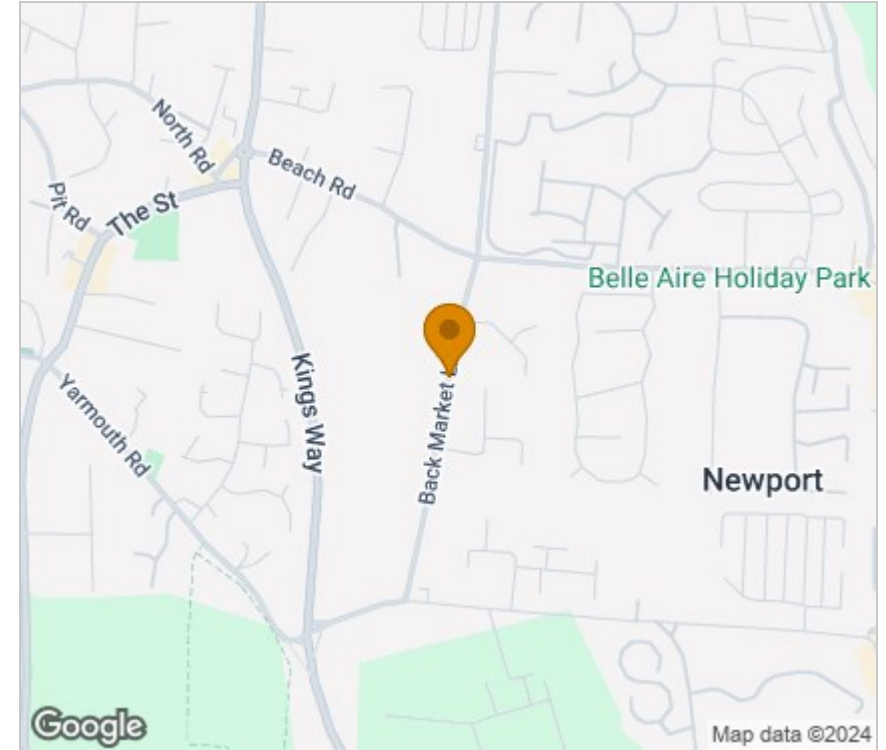
Ref: Y12165/07/24/CF



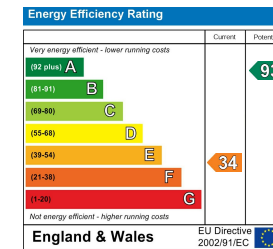
Floor Plan



Area Map



Energy Efficiency Graph



Viewing

Please contact our Aldreds Great Yarmouth Office on 01493 844891 if you wish to arrange a viewing appointment for this property or require further information.

Disclaimer

These particulars are issued on an understanding that all negotiations shall be conducted through Messrs. Aldreds. Please note: Messrs. Aldreds for themselves and for the vendors or lessors of this property whose agents they are given notice that: 1. Particulars are set out as a general outline only for guidance of intending purchasers or lessees, and do not constitute nor constitute part of, an offer or contract. 2. All descriptions, dimensions, references to condition and necessary permissions for use and occupation, and other details are given without responsibility and any intending purchasers or tenants should not rely on them as statements or representations of fact but must satisfy themselves by inspection or otherwise as to the correctness of each of them. 3. No person in the employment of Messrs. Aldreds has any authority to make or give any representation or warranty whatever in relation to this property. 4. If you are proposing to visit the property and are travelling some distance please check with Aldreds on the issue of availability prior to travelling. 5. Aldreds Property Consultants and associated services may offer additional services to the prospective purchaser for which they will be entitled to receive a commission.

Aldreds are pleased to be working with Mortgage Advice Bureau. They're an award-winning mortgage broker with over 1,400 advisers across the UK, and have access to over 12,000 mortgage products from over 90 lenders. Aldreds Estate Agents Ltd receive a commission of £200 on each completed case. Your home may be repossessed if you do not keep up repayments on your mortgage. There may be a fee for mortgage advice. The actual amount you pay will depend upon your circumstances. The fee is up to 1%, but a typical fee is 0.3% of the amount borrowed. Mortgage Advice Bureau is a trading name of Mortgage Seeker Limited which is an appointed representative of Mortgage Advice Bureau Limited and Mortgage Advice Bureau (Derby) Limited which are authorised and regulated by the Financial Conduct Authority. Mortgage Seeker Limited Registered Office: Lovewell Blake, Sixty Six North Quay, Great Yarmouth, Norfolk, NR30 1HE. Registered in England Number: 03721415. 6. Potential purchasers should check with their providers that the broadband and mobile phone coverage they would require is available.

17 Hall Quay, Great Yarmouth, Norfolk, NR30 1HJ
Tel: 01493 844891 Email: yarmouth@aldreds.co.uk <https://www.aldreds.co.uk/>

Registered in England Reg. No. 08945751 Registered Office: 66 North Quay, Great Yarmouth, Norfolk NR30 1HE Directors: Mark Duffield B.S.c. FRICS. Dan Crawley MNAEA Paul Lambert MNAEA