

Aldreds
Estate Agents



43 Crosstead

Great Yarmouth NR30 4AP

£295,000



43 Crosstead

With an attractive west facing garden, Aldreds are pleased to offer this spacious extended three bedroom linked detached bungalow sitting in this popular location. The property offers spacious accommodation. Internally there is an entrance hall, lounge, kitchen/diner, sitting room/sun room, utility room, three bedrooms and a shower room. Gas central heating and sealed unit double glazing. Outside there are gardens to front & rear and a driveway leading to garage. The property is offered with no upward chain.

Entrance Hall

Entrance door to side, loft access, storage cupboard.

Lounge

15'11" x 12'4" max (4.87 x 3.76 max)

Brick fireplace, double glazed window to front aspect, radiator.

Kitchen/Diner

11'1" x 10'5" (3.4 x 3.2)

Base units with worktops, boiler in cupboard, double glazed window to front aspect, part tiled walls, electric cooker point.

Utility Room

9'10" x 3'11" (3 x 1.2)

Door to side, sealed unit double glazing, plumbing for washing machine.

Bedroom 1

11'5" x 11'5" max (3.5 x 3.48 max)

Fitted wardrobes, window looking in to sitting room/sun room, radiator.

Bedroom 2

11'5" x 10'2" (3.48 x 3.1)

Radiator, double glazed patio door to

Sitting Room/Sun Room

22'5" x 9'3" (6.85 x 2.83)

Double glazed window to side aspect, double glazed window to rear aspect, double glazed patio doors to rear, radiator.





Bedroom 3

10'7" x 7'2" (3.25 x 2.2)

Double glazed window to side aspect, radiator.

Shower Room

8'2" x 5'6" (2.5 x 1.7)

Shower in cubicle, low level WC, hand basin, tiled walls, opaque double glazed window to side aspect.

Outside

To the front there is a garden. Driveway to garage, the garage has power & light. To the rear there is an approx. west facing garden that is mainly laid to lawn, patio, brick shed, bushes & shrubs.

Tenure

Freehold

Services

Mains water, electricity, gas, drainage.

Council Tax

Band C

EPC

D rating - 63

Location

Great Yarmouth is the largest resort on the East Norfolk coast with its Historic Market Place and varied selection of shops. The town has a busy port and the rivers Yare and Bure give access to the Norfolk Broads. There are Museums * Race Course * Greyhound Stadium * Schools for all ages * District Hospital approximately 5 miles south. Bus and rail services connect with Norwich.

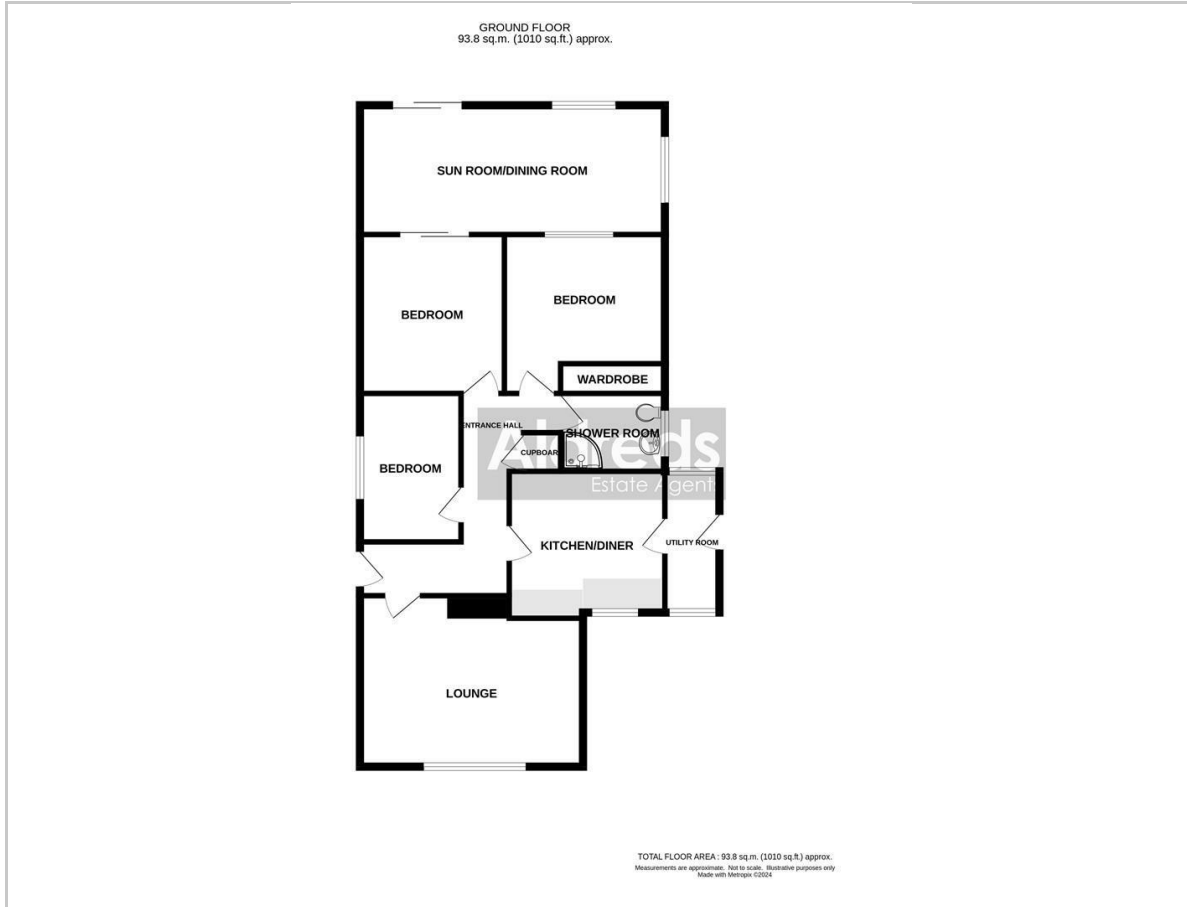
Directions

Leave Great Yarmouth heading north on the A149. at the traffic lights with Jellicoe Road turn right. Turn left in to Crosstead.

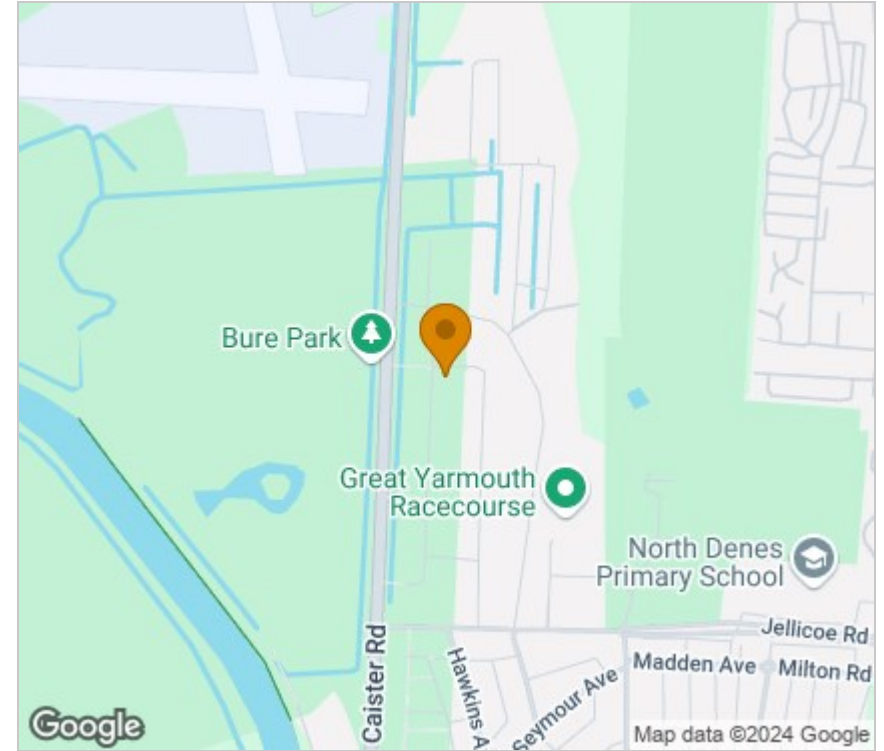
Ref Y12112/05/24



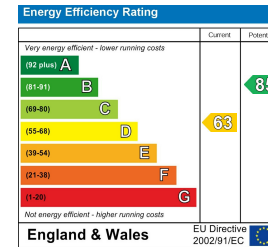
Floor Plan



Area Map



Energy Efficiency Graph



Viewing

Please contact our Aldreds Great Yarmouth Office on 01493 844891 if you wish to arrange a viewing appointment for this property or require further information.

Disclaimer

These particulars are issued on an understanding that all negotiations shall be conducted through Messrs. Aldreds. Please note: Messrs. Aldreds for themselves and for the vendors or lessors of this property whose agents they are given notice that: 1. Particulars are set out as a general outline only for guidance of intending purchasers or lessees, and do not constitute nor constitute part of, an offer or contract. 2. All descriptions, dimensions, references to condition and necessary permissions for use and occupation, and other details are given without responsibility and any intending purchasers or tenants should not rely on them as statements or representations of fact but must satisfy themselves by inspection or otherwise as to the correctness of each of them. 3. No person in the employment of Messrs. Aldreds has any authority to make or give any representation or warranty whatever in relation to this property. 4. If you are proposing to visit the property and are travelling some distance please check with Aldreds on the issue of availability prior to travelling. 5. Aldreds Property Consultants and associated services may offer additional services to the prospective purchaser for which they will be entitled to receive a commission.

Aldreds are pleased to be working with Mortgage Advice Bureau. They're an award-winning mortgage broker with over 1,400 advisers across the UK, and have access to over 12,000 mortgage products from over 90 lenders. Aldreds Estate Agents Ltd receive a commission of £200 on each completed case. Your home may be repossessed if you do not keep up repayments on your mortgage. There may be a fee for mortgage advice. The actual amount you pay will depend upon your circumstances. The fee is up to 1%, but a typical fee is 0.3% of the amount borrowed. Mortgage Advice Bureau is a trading name of Mortgage Seeker Limited which is an appointed representative of Mortgage Advice Bureau Limited and Mortgage Advice Bureau (Derby) Limited which are authorised and regulated by the Financial Conduct Authority. Mortgage Seeker Limited Registered Office: Lovewell Blake, Sixty Six North Quay, Great Yarmouth, Norfolk, NR30 1HE. Registered in England Number: 03721415. 6. Potential purchasers should check with their providers that the broadband and mobile phone coverage they would require is available.

17 Hall Quay, Great Yarmouth, Norfolk, NR30 1HJ
Tel: 01493 844891 Email: yarmouth@aldreds.co.uk <https://www.aldreds.co.uk/>

Registered in England Reg. No. 08945751 Registered Office: 66 North Quay, Great Yarmouth, Norfolk NR30 1HE Directors: Mark Duffield B.S.c. FRICS. Dan Crawley MNAEA Paul Lambert MNAEA