



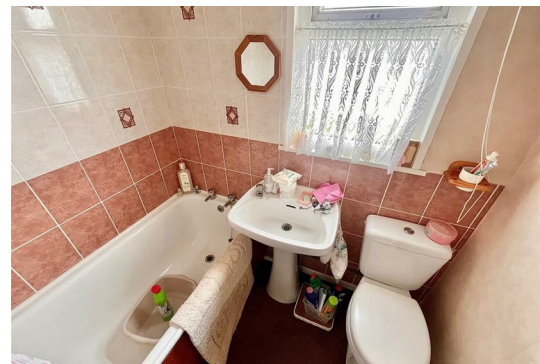
94 Sundowner Newport Road

Hemsby, Great Yarmouth, NR29 4NW

£20,000



Aldreds are pleased to offer this semi detached holiday chalet situated on this quiet popular coastal village site located in the Newport area of Hemsby. The chalet offers accommodation including living room, kitchenette, two bedrooms and bathroom. The property benefits from uPVC double glazed windows. Outside there are communal lawned gardens and nearby car parking.



Living Room 11'8" x 11'6" (3.58 x 3.51)

Part double glazed uPVC entrance door, double glazed window to front aspect, meter storage cupboard, tv point, open access to:

Kitchenette 8'2" x 5'4" (2.51 x 1.65)

Fitted with a wood trim fitted kitchen with wall and matching base units with work surface over, single drainer cast sink unit, recess with electric cooker, part tiled walls, tiled vinyl flooring, recess with fridge, double glazed window to rear aspect, built in cupboard housing the hot water cylinder with fitted immersion heater.

Bedroom 1 8'0" x 7'4" (2.46 x 2.26)

Plus built in wardrobe, double glazed window to front aspect, double bed.

Inner Lobby

Doors leading off to:

Bedroom 2 8'0" x 7'6" (2.44 x 2.29)

Plus wardrobe cupboard, double glazed window to rear aspect, double bed.

Bathroom

White suite comprising cast iron panelled bath with electric shower over, low level wc, pedestal wash basin, part tiled walls, frosted double glazed window to rear aspect.

Outside

Immediately in front of the chalet is an area of paved patio facing a westerly direction. The chalet sits in communal lawned grounds with parking nearby.

Tenure

Leasehold.

Lease renewed in 2015 for 99 years

Ground rent and site fees for 2024 of £1600 approximately

Open 1st March to 31st October

Dogs Allowed

Services

Mains water, electric and drainage

Council Tax

Great Yarmouth Borough Council - Band 'A'

Location

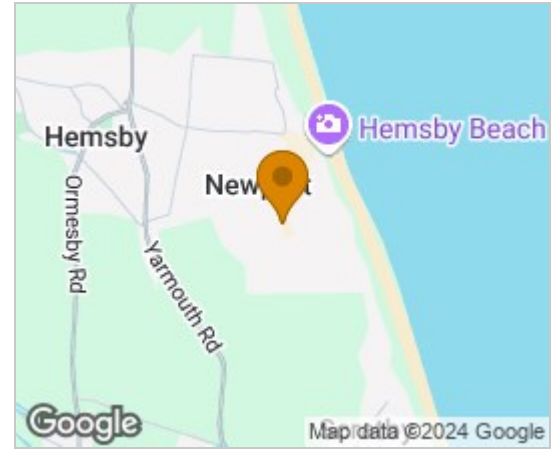
Hemsby is a coastal village approximately 7 miles north of Great Yarmouth. The tourist-based part of the village lies along Beach Road and is commonly known as Hemsby Beach. At the beach end of the road are a number of cafes, shops and amusement arcades, ten-pin bowling, bingo, a play area and many different machines. A variety of seaside-style cafes and restaurants are available, offering sit-down meals, take-away fish and chips and Chinese food. Fun fairs, crazy golf courses and children's rides also feature on a number of sites along the street.

Directions

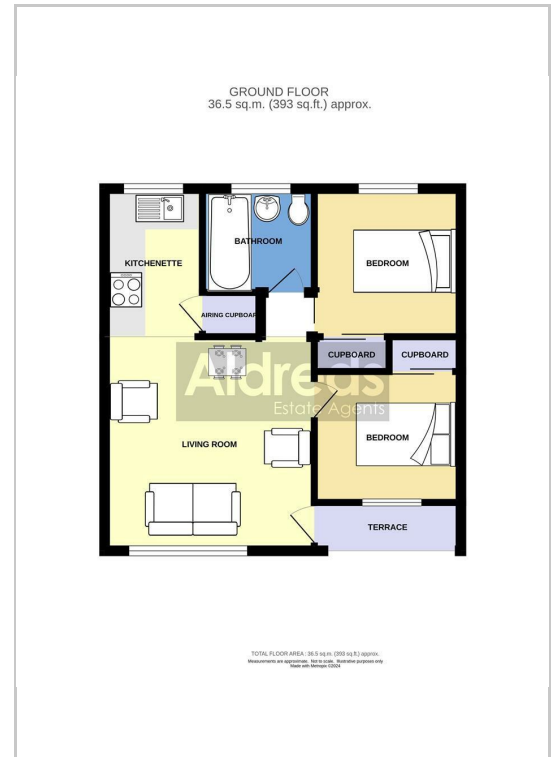
From the Yarmouth office head north along the A149 Caister Road, continue past the Yarmouth Stadium, at the roundabout turn left onto the Caister Bypass, continue over the next roundabout into Jack Chase Way, continue over the next roundabout into Scratby Road, continue into Yarmouth Road, turn right into Newport Road, continue towards the end of the road, turn right into Sundowner Holiday Park, continue along the access road passing the site office and bear immediately left. Follow the road up to the top left hand corner of the site where the chalet can be found on the left hand side.

Ref: Y12067/05/24/CF

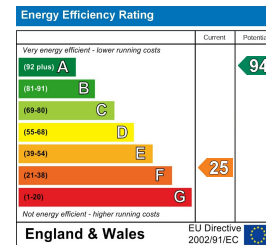
Area Map



Floor Plans



Energy Efficiency Graph



Disclaimer

These particulars are issued on an understanding that all negotiations shall be conducted through Messrs. Aldreds. Please note: Messrs. Aldreds for themselves and for the vendors or lessors of this property whose agents they are given notice that: 1. Particulars are set out as a general outline only for guidance of intending purchasers or lessees, and do not constitute nor constitute part of, an offer or contract. 2. All descriptions, dimensions, references to condition and necessary permissions for use and occupation, and other details are given without responsibility and any intending purchasers or tenants should not rely on them as statements or representations of fact but must satisfy themselves by inspection or otherwise as to the correctness of each of them. 3. No person in the employment of Messrs. Aldreds has any authority to make or give any representation or warranty whatever in relation to this property. 4. If you are proposing to visit the property and are travelling some distance please check with Aldreds on the issue of availability prior to travelling. 5. Aldreds Property Consultants and associated services may offer additional services to the prospective purchaser for which they will be entitled to receive a commission.

Aldreds are pleased to be working with Mortgage Advice Bureau. They're an award-winning mortgage broker with over 1,400 advisers across the UK, and have access to over 12,000 mortgage products from over 90 lenders. Aldreds Estate Agents Ltd receive a commission of £200 on each completed case. Your home may be repossessed if you do not keep up repayments on your mortgage. There may be a fee for mortgage advice. The actual amount you pay will depend upon your circumstances. The fee is up to 1%, but a typical fee is 0.3% of the amount borrowed. Mortgage Advice Bureau is a trading name of Mortgage Seeker Limited which is an appointed representative of Mortgage Advice Bureau Limited and Mortgage Advice Bureau (Derby) Limited which are authorised and regulated by the Financial Conduct Authority. Mortgage Seeker Limited Registered Office: Lovewell Blake, Sixty Six North Quay, Great Yarmouth, Norfolk, NR30 1HE. Registered in England Number: 03721415. 6. Potential purchasers should check with their providers that the broadband and mobile phone coverage they would require is available.

17 Hall Quay, Great Yarmouth, Norfolk, NR30 1HJ

Tel: 01493 844891 Email: yarmouth@aldreds.co.uk <https://www.aldreds.co.uk/>

Registered in England Reg. No. 08945751 Registered Office: 66 North Quay, Great Yarmouth, Norfolk NR30 1HE Directors: Mark Duffield B.S.c. FRICS. Dan Crawley MNAEA Paul Lambert MNAEA