



Aldreds
Estate Agents

54 Bermuda, Newport Road
Hemsby, Great Yarmouth, NR29 4NN
£31,995



54 Bermuda Newport

Aldreds are pleased to offer this very well presented two storey, two bedroom, end terrace holiday chalet situated in the popular Bermuda Holiday Park. This spacious chalet offers accommodation including lounge, kitchen, bathroom and two first floor bedrooms. The property benefits from double glazed windows and faces a sunny westerly direction. The chalet sits in well maintained lawned communal grounds with on site parking and facilities available. Offered with no onward chain and is sold fully equipped with quality furnishings. A viewing is highly recommended.

Open Plan Living Room/Kitchen

Living Room

14'2" x 11'4" (4.32 x 3.47)

Double glazed entrance door, full height double glazed window to front aspect, stairs rising to landing, power points, tv point, leather sofa and armchair, wood effect laminate flooring, electric heater, open plan access to:-

Kitchen Area

6'4" x 6'1" (1.94 x 1.86)

Fitted with wood grain finish shaker style wall and matching base units with granite effect work surfaces over, single drainer stainless steel sink unit, recess with electric cooker, fridge/freezer, dishwasher, microwave, wood effect laminate flooring, part tiled walls, double glazed window to rear aspect with fitted blinds, door to:

Bathroom

White suite comprising curved panelled bath with shower fitting over, pedestal wash basin, low level wc, fully tiled walls and flooring, frosted double glazed window to rear aspect with fitted blinds.

First Floor Landing

Built in airing cupboard housing the copper hot water cylinder, additional built in storage cupboard, doors leading off to:

Bedroom 1

10'10" x 8'2" (3.31 x 2.51)

Plus over stairs storage cupboard, double bed, bedside tables, double glazed window to front aspect with fitted blinds.

Bedroom 2

8'11" x 7'11" (2.74 x 2.43)

Plus storage cupboard, triple bunk bed, double glazed window to rear aspect with fitted blinds.





Outside

Westerly facing with communal lawned grounds, adjacent parking and on site facilities very close by.

Tenure

Leasehold.

Lease Term: 99 years from 1st May 1977

Site fees for 2024 £1469 approximately

There is a meter for the electric

Site Open 20th March - 31st October.

Swimming pool on site.

No dogs allowed.

Services

Mains water, electric and drainage.

Council Tax

Great Yarmouth Borough Council - Band 'A' (reduction applies for holiday use).

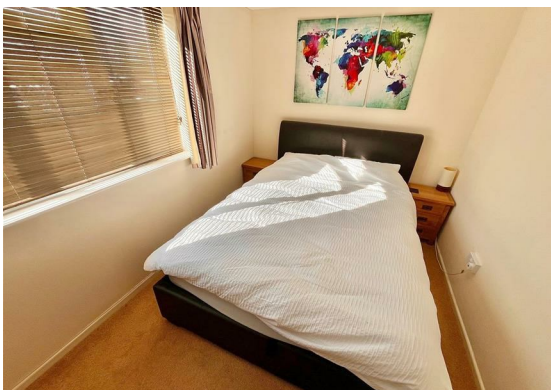
Location

Hemsby is a coastal village approximately 7 miles north of Great Yarmouth. The tourist-based part of the village lies along Beach Road and is commonly known as Hemsby Beach. At the beach end of the road are a number of cafes, shops and amusement arcades, ten-pin bowling, bingo, a play area and many different machines. A variety of seaside-style cafes and restaurants are available, offering sit-down meals, take-away fish and chips and Chinese food. Fun fairs, crazy golf courses and children's rides also feature on a number of sites along the street.

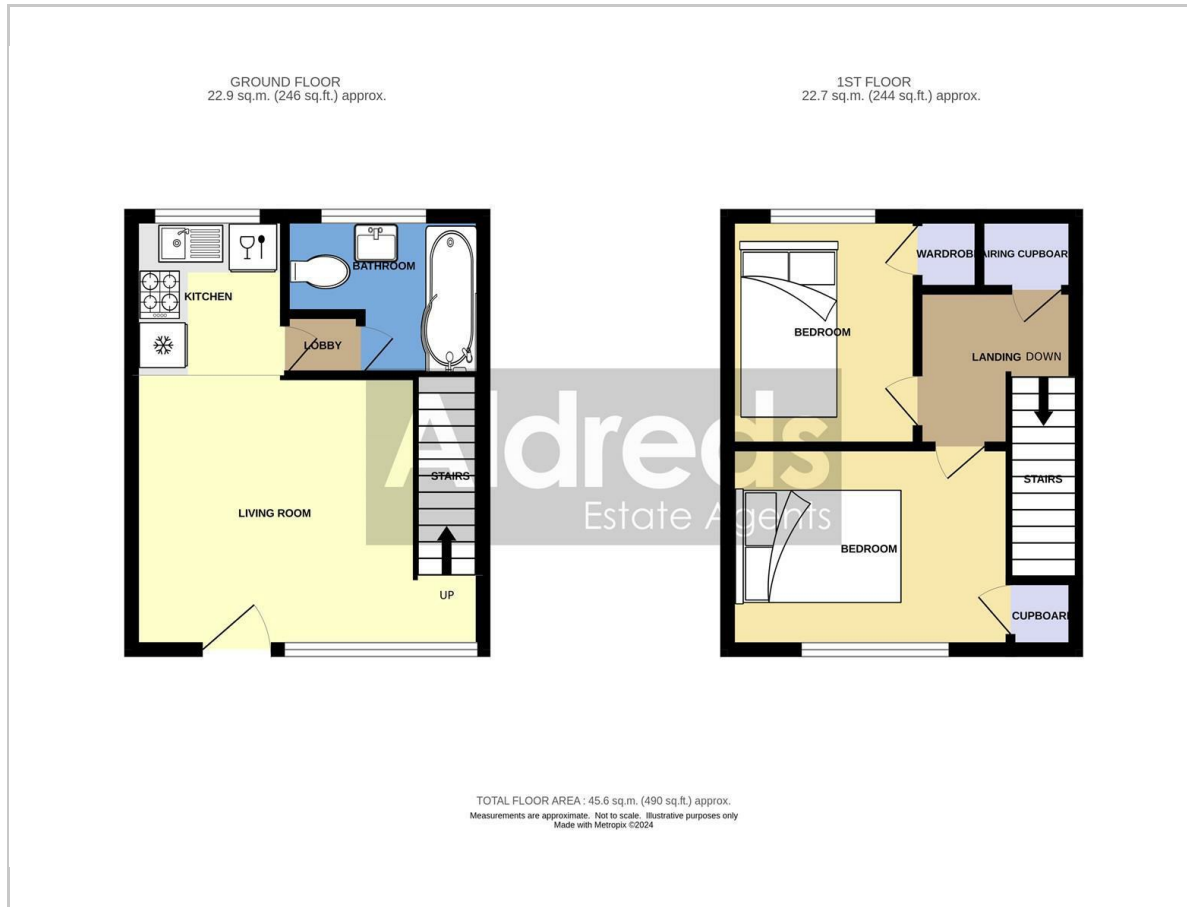
Directions

From the Yarmouth office head north along the A149 Caister Road, continue past the Yarmouth Stadium, at the roundabout turn left onto the Caister Bypass, continue over the next roundabout into Jack Chase Way, continue over the next roundabout into Scratby Road, continue into Yarmouth Road, turn right into Newport Road, turn left into the Bermuda Holiday Park, continue straight ahead before bearing left past the parade and after a short distance bear right where the chalet can be found on the right hand side.

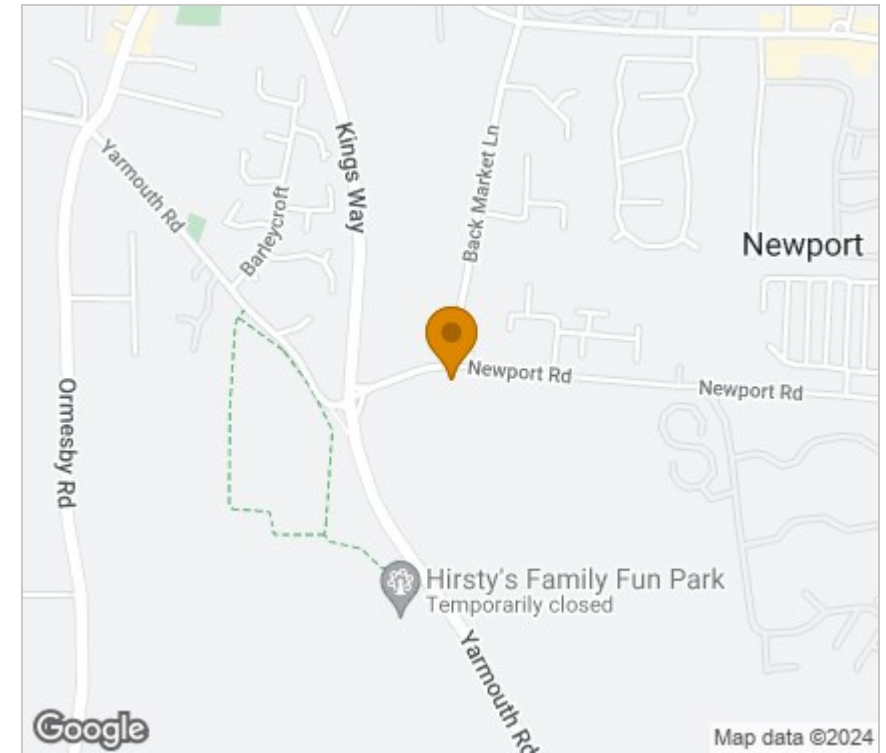
Ref: Y12013/03/24/CF



Floor Plan



Area Map



Viewing

Please contact our Aldreds Great Yarmouth Office on 01493 844891 if you wish to arrange a viewing appointment for this property or require further information.

Disclaimer

These particulars are issued on an understanding that all negotiations shall be conducted through Messrs. Aldreds. Please note: Messrs. Aldreds for themselves and for the vendors or lessors of this property whose agents they are given notice that: 1. Particulars are set out as a general outline only for guidance of intending purchasers or lessees, and do not constitute nor constitute part of, an offer or contract. 2. All descriptions, dimensions, references to condition and necessary permissions for use and occupation, and other details are given without responsibility and any intending purchasers or tenants should not rely on them as statements or representations of fact but must satisfy themselves by inspection or otherwise as to the correctness of each of them. 3. No person in the employment of Messrs. Aldreds has any authority to make or give any representation or warranty whatever in relation to this property. 4. If you are proposing to visit the property and are travelling some distance please check with Aldreds on the issue of availability prior to travelling. 5. Aldreds Property Consultants and associated services may offer additional services to the prospective purchaser for which they will be entitled to receive a commission.

Aldreds are pleased to be working with Mortgage Advice Bureau. They're an award-winning mortgage broker with over 1,400 advisers across the UK, and have access to over 12,000 mortgage products from over 90 lenders. Aldreds Estate Agents Ltd receive a commission of £200 on each completed case. Your home may be repossessed if you do not keep up repayments on your mortgage. There may be a fee for mortgage advice. The actual amount you pay will depend upon your circumstances. The fee is up to 1%, but a typical fee is 0.3% of the amount borrowed. Mortgage Advice Bureau is a trading name of Mortgage Seeker Limited which is an appointed representative of Mortgage Advice Bureau Limited and Mortgage Advice Bureau (Derby) Limited which are authorised and regulated by the Financial Conduct Authority. Mortgage Seeker Limited Registered Office: Lovewell Blake, Sixty Six North Quay, Great Yarmouth, Norfolk, NR30 1HE. Registered in England Number: 03721415. 6. Potential purchasers should check with their providers that the broadband and mobile phone coverage they would require is available.

17 Hall Quay, Great Yarmouth, Norfolk, NR30 1HJ
Tel: 01493 844891 Email: yarmouth@aldreds.co.uk <https://www.aldreds.co.uk/>

Registered in England Reg. No. 08945751 Registered Office: 66 North Quay, Great Yarmouth, Norfolk NR30 1HE Directors: Mark Duffield B.S.c. FRICS. Dan Crawley MNAEA Paul Lambert MNAEA