



10 Plymouth Close

Caister-On-Sea, Great Yarmouth, NR30 5TZ

£340,000



10 Plymouth Close

Aldreds are pleased to offer this modern detached bungalow in a cul de sac location on this popular modern development. The Property has been well maintained and would make an ideal retirement home with accommodation comprising of an entrance hall, lounge/dining room, kitchen/breakfast room, utility room, conservatory, master bedroom with en-suite shower room, two further bedrooms and additional shower room. Outside there is a driveway and integral garage with electric door, stunning landscaped rear garden. The property also benefits from double glazed windows, gas central heating and is offered chain free.

Entrance Hall

Part double glazed pvc entrance door with glazed side screen, radiator, built in airing cupboard, access to the loft space, doors leading off to:

Lounge/Dining Room

18'9" x 14'9" (5.73 x 4.50)

Corner feature brick fireplace with inset coal effect gas fire, tv point, double glazed window to rear aspect, two radiators, fitted carpet, sliding double glazed patio doors to:

Conservatory

9'8" x 9'3" (2.95 x 2.84)

Brick and pvc double glazed construction with poly carbonate roof over and fitted blinds, radiator, power and lighting, French doors to rear.

Kitchen/Breakfast Room

14'7" x 8'5" (4.47 x 2.57)

Fitted with a range of cream finish wall and matching base units with roll top work surface over, single drainer sink unit, built in electric oven with four ring electric ceramic hob over, fitted extractor hood, part tiled walls, radiator, double glazed window to rear aspect, space for fridge, door to:

Utility Room

8'9" x 5'1" (2.67 x 1.57)

Matching cream finish larder and base unit with roll top work surface over, space and plumbing for a washing machine, part tiled walls, radiator, wall mounted gas boiler, double glazed window to side aspect, part frosted glazed wood panel door to rear.

Master Bedroom

13'1" maximum x 10'7" (4.01 maximum x 3.25)

Including the recess with built in wardrobe recess with sliding mirrored doors, radiator, double glazed window to front aspect, door to:

En-Suite Shower Room

5'4" x 5'1" (1.65 x 1.55)

Tiled corner shower cubicle with mains fed shower fitting, low level wc, pedestal wash basin, part tiled walls, extractor fan, frosted double glazed window to side aspect, radiator.





Bedroom 2

11'6" x 8'11" (3.51 x 2.72)

Including fitted wardrobes, radiator, double glazed window to front aspect.

Bedroom 3

8'2" x 7'10" (2.49 x 2.39)

Double glazed window to side aspect, radiator.

Shower Room

Tiled shower cubicle with electric shower fitting, low level wc, pedestal wash basin, mainly tiled walls, chrome towel rail/radiator, frosted double glazed window to side aspect.

Outside

To the front of the property is a block pavior driveway leading to the integral single garage with electric roller blind door. The garden to the front is laid to lawn with planted borders. A gated side access leads to the rear garden which has been superbly landscaped and offers a variety of texture and colour with the carefully planned and planted borders with shrubs, flowering plants and small trees, lawn adjacent and paved patio areas. The garden is enclosed by timber panelled fencing with a side storage area with covered storage and a useful timber shed with power connected.

Tenure

Freehold

Services

Mains water, electric, gas and drainage.

Council Tax

Great Yarmouth Borough Council - Band 'D'

Location

Caister-on-Sea is a popular coastal village approximately 3 miles north of Great Yarmouth * There are a variety of local shops, pubs and restaurants * Post Office * First, Middle and High schools * Golf Course * Regular bus services to Great Yarmouth * Caister also boasts Roman Ruins * a sandy beach and its own Historic Castle.

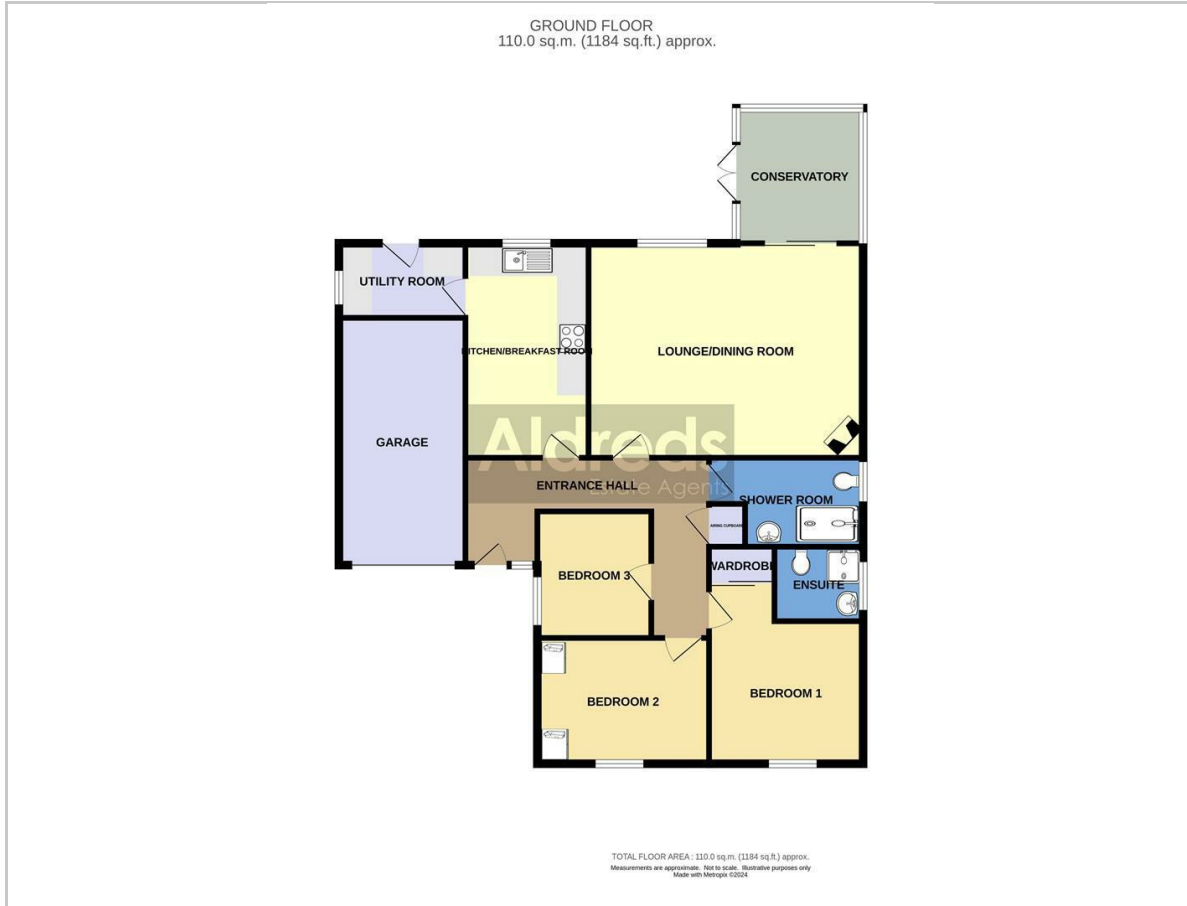
Directions

From the Yarmouth office head north along the A149 Caister Road, continue past the Yarmouth Stadium, at the roundabout take the left hand exit onto the Caister Bypass, continue over the next roundabout into Jack Chase Way, turn right into Prince of Wales Road, turn left into Diana Way, then left again into Shannon Drive. Turn first right in to Plymouth Close where the property can be found on the right hand side.

Ref: Y11996/03/24/CF



Floor Plan



Viewing

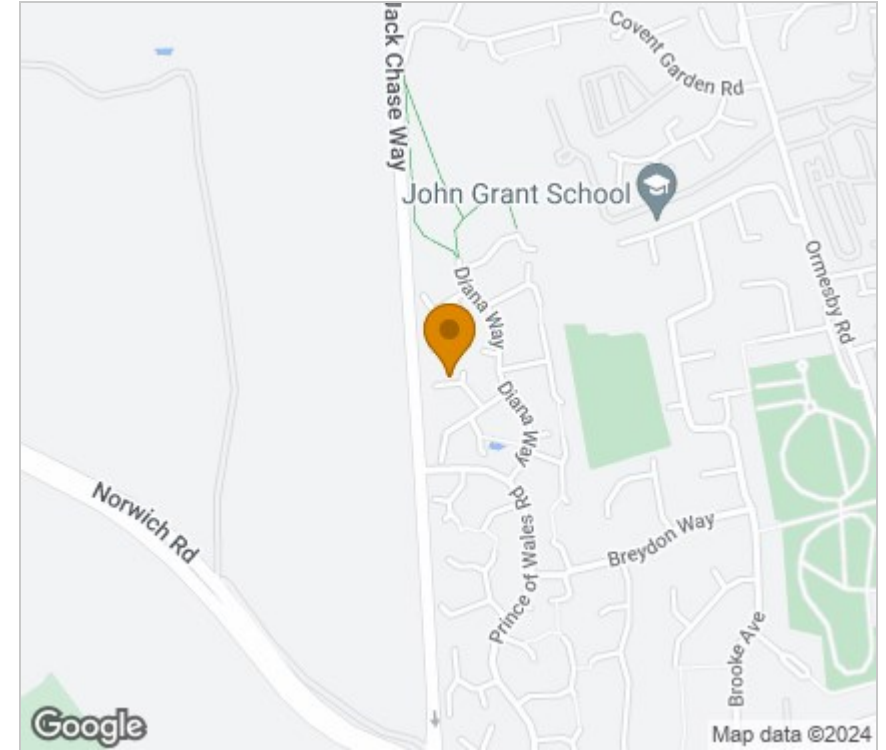
Please contact our Aldreds Great Yarmouth Office on 01493 844891 if you wish to arrange a viewing appointment for this property or require further information.

Disclaimer

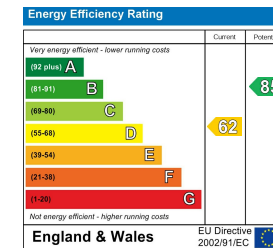
These particulars are issued on an understanding that all negotiations shall be conducted through Messrs. Aldreds. Please note: Messrs. Aldreds for themselves and for the vendors or lessors of this property whose agents they are given notice that: 1. Particulars are set out as a general outline only for guidance of intending purchasers or lessees, and do not constitute nor constitute part of, an offer or contract. 2. All descriptions, dimensions, references to condition and necessary permissions for use and occupation, and other details are given without responsibility and any intending purchasers or tenants should not rely on them as statements or representations of fact but must satisfy themselves by inspection or otherwise as to the correctness of each of them. 3. No person in the employment of Messrs. Aldreds has any authority to make or give any representation or warranty whatever in relation to this property. 4. If you are proposing to visit the property and are travelling some distance please check with Aldreds on the issue of availability prior to travelling. 5. Aldreds Property Consultants and associated services may offer additional services to the prospective purchaser for which they will be entitled to receive a commission.

Aldreds are pleased to be working with Mortgage Advice Bureau. They're an award-winning mortgage broker with over 1,400 advisers across the UK, and have access to over 12,000 mortgage products from over 90 lenders. Aldreds Estate Agents Ltd receive a commission of £200 on each completed case. Your home may be repossessed if you do not keep up repayments on your mortgage. There may be a fee for mortgage advice. The actual amount you pay will depend upon your circumstances. The fee is up to 1%, but a typical fee is 0.3% of the amount borrowed. Mortgage Advice Bureau is a trading name of Mortgage Seeker Limited which is an appointed representative of Mortgage Advice Bureau Limited and Mortgage Advice Bureau (Derby) Limited which are authorised and regulated by the Financial Conduct Authority. Mortgage Seeker Limited Registered Office: Lovewell Blake, Sixty Six North Quay, Great Yarmouth, Norfolk, NR30 1HE. Registered in England Number: 03721415. 6. Potential purchasers should check with their providers that the broadband and mobile phone coverage they would require is available.

Area Map



Energy Efficiency Graph



17 Hall Quay, Great Yarmouth, Norfolk, NR30 1HJ
Tel: 01493 844891 Email: yarmouth@aldreds.co.uk <https://www.aldreds.co.uk/>

Registered in England Reg. No. 08945751 Registered Office: 66 North Quay, Great Yarmouth, Norfolk NR30 1HE Directors: Mark Duffield B.S.c. FRICS. Dan Crawley MNAEA Paul Lambert MNAEA