



59 Long Beach Estate

Hemsby, Great Yarmouth, NR29 4JD

£265,000



59 Long Beach Estate

Aldreds are pleased to offer this superbly presented detached bungalow in a quiet tucked away spot and a stones throw from the sought after Hemsby valley and beach beyond. The property has been much improved and presents an ideal space for retiring to or would also make an ideal investment property due to being run as a successful holiday let. The accommodation on offer comprises of an entrance porch, living room with feature fireplace and wood burner, dining room, quality fitted kitchen, two bedrooms, modern bathroom, external conservatory, established private gardens and driveway parking. The property also benefits from double glazed windows and electric heating. An early viewing is strongly recommended.

Entrance Porch

Double glazed windows and part double glazed composite door, cloaks storage space, attractive wooden flooring, door to:

Living Room

16'10" x 12'7" (5.15 x 3.84)

Attractive wood burner set in a red brick fireplace with timber mantle over, double glazed window to front aspect, feature block glass screen to porch, attractive wooden flooring, tv point, radiator, open access to:

Dining Room

9'8" x 6'2" (2.97 x 1.90)

Plus Built in airing cupboard housing the pressurised hot water cylinder and Heatrae electric boiler, double glazed window to rear aspect, attractive wooden flooring, radiator, open access to:

Kitchen

10'5" x 8'5" (3.20 x 2.58)

Re-fitted with a quality white gloss kitchen with handle less wall and matching base units with black granite effect worktops over, four ring ceramic hob with extractor hood over, built in electric double oven, space and plumbing for a dishwasher, metro tiling to walls, single drainer one and a half bowl stainless steel sink unit, double glazed windows to front and rear, double glazed door to rear, grey wood effect vinyl flooring.

Inner Lobby

Door to:

Bathroom

6'7" x 6'2" (2.03 x 1.88)

New white suite comprising panelled bath with shower mixer tap, low level wc with concealed cistern, vanity unit with inset wash basin, part aqua panelled walls, extractor fan, frosted double glazed window to rear aspect, chrome towel rail/radiator.

Bedroom 1

12'0" x 8'10" maximum (3.67 x 2.70 maximum)

Double glazed window to rear aspect, radiator, tv point, access to the loft space.





Bedroom 2

12'2" x 6'7" (3.71 x 2.01)

Double glazed window to front aspect, radiator.

Outside

The property is located on the far side of Long Beach in a quiet secluded spot with double gates leading to a shingled driveway for parking. The garden is fully enclosed and private with areas of patio, lawn and an abundance of bushes and planting. Attached to the end of the bungalow is an external Conservatory 3.07m x 3.03m of double glazed construction providing an ideal place to relax. There is also an external wc with plumbing for a washing machine. Useful timber shed.

Tenure

Freehold.

Services

Mains water, electric and drainage.

Council Tax

Great Yarmouth Borough Council - Band 'A'

Location

Hemsby is a coastal village approximately 7 miles north of Great Yarmouth. There is a variety of shops, post office, medical centre, first school with older children attending the middle and high schools in Martham, a school bus service link, regular bus service to and from Great Yarmouth. The beaches are one of the major draws of Hemsby, with miles of sandy coastline. Large sand dunes form a natural barrier between the beach and the village behind it. Hemsby is split into two parts: Hemsby Village and Hemsby Beach. Hemsby Village is mainly the residential area located about a mile inland. Kingsway this is also the main location for buses into Great Yarmouth and Martham.

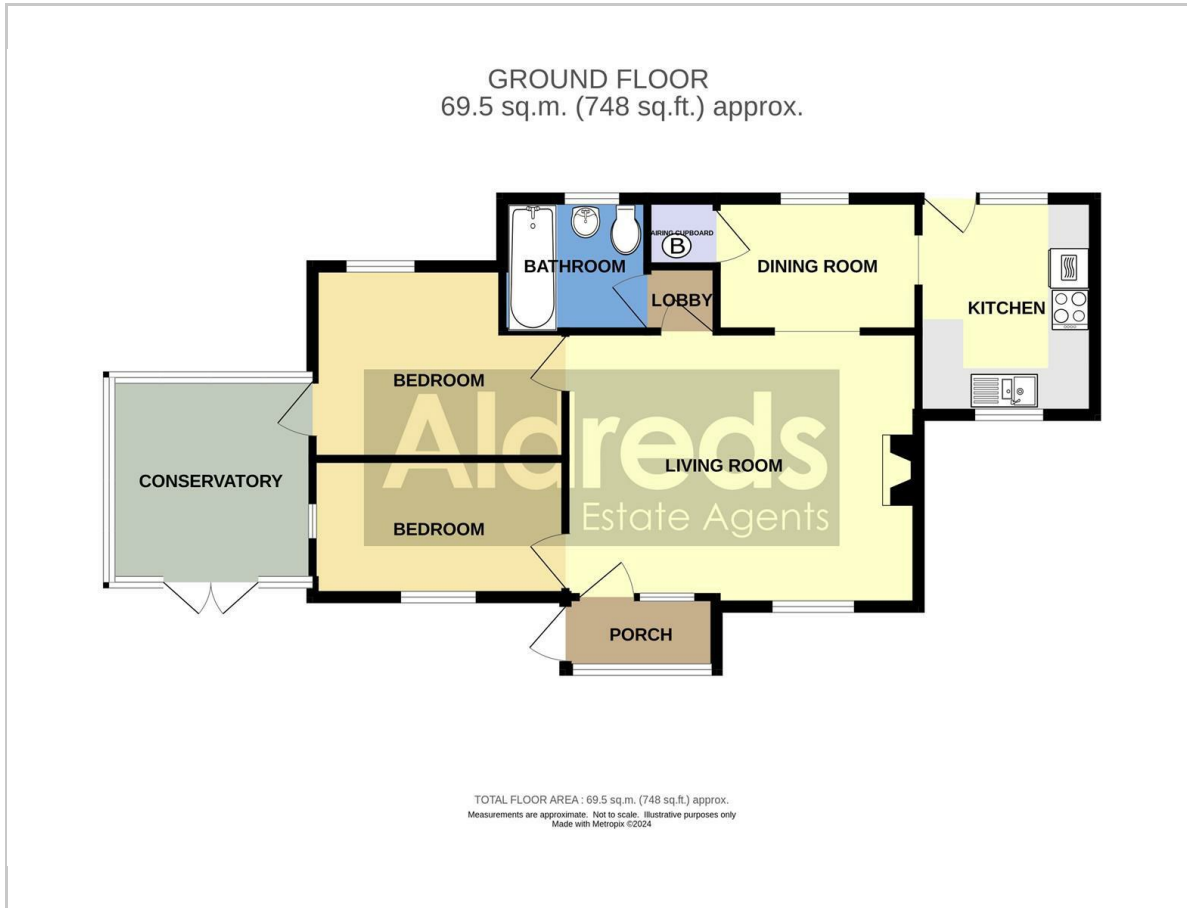
Directions

From the Yarmouth office head north along the A149 Caister Road, continue past the Yarmouth Stadium, at the roundabout turn left onto the Caister Bypass, continue over the next roundabout into Jack Chase Way, continue over the next roundabout into Scratby Road, continue into Yarmouth Road, continue into Kingsway, at the mini roundabout, take the third exit into Beach Road, continue a short way along, turn left into Kings Loke, continue towards the end, as the road bears sharply round to the right continue into Long Beach Estate and bear left and continue down to the bottom of the road where the property can be found straight ahead marked by our 'For Sale' board.

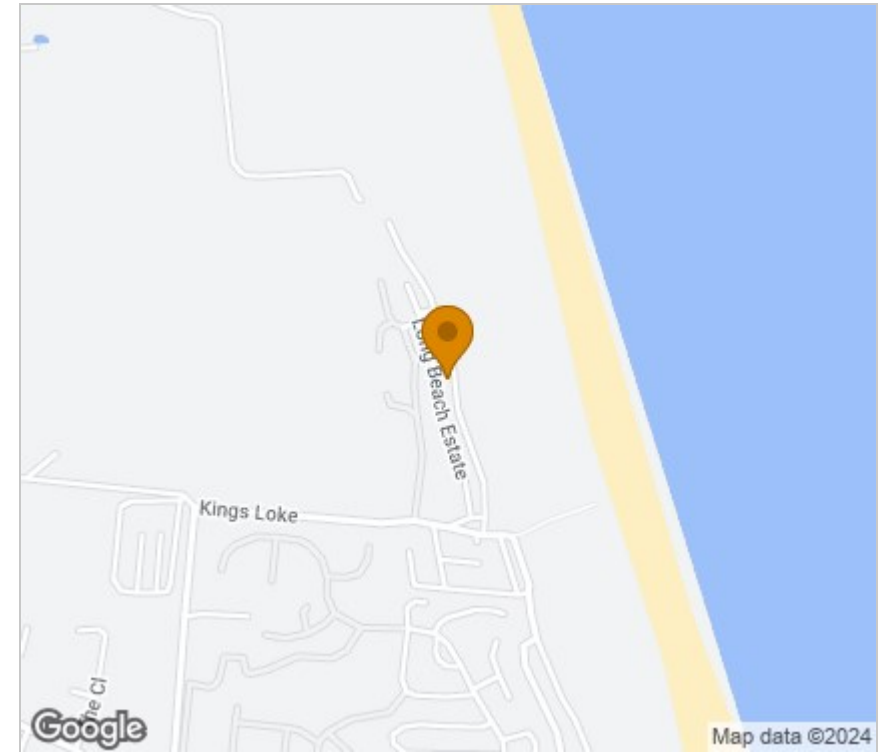
Ref: Y11978/02/24/CF



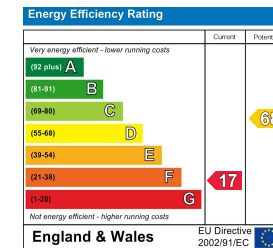
Floor Plan



Area Map



Energy Efficiency Graph



Viewing

Please contact our Aldreds Great Yarmouth Office on 01493 844891 if you wish to arrange a viewing appointment for this property or require further information.

Disclaimer

These particulars are issued on an understanding that all negotiations shall be conducted through Messrs. Aldreds. Please note: Messrs. Aldreds for themselves and for the vendors or lessors of this property whose agents they are given notice that: 1. Particulars are set out as a general outline only for guidance of intending purchasers or lessees, and do not constitute nor constitute part of, an offer or contract. 2. All descriptions, dimensions, references to condition and necessary permissions for use and occupation, and other details are given without responsibility and any intending purchasers or tenants should not rely on them as statements or representations of fact but must satisfy themselves by inspection or otherwise as to the correctness of each of them. 3. No person in the employment of Messrs. Aldreds has any authority to make or give any representation or warranty whatever in relation to this property. 4. If you are proposing to visit the property and are travelling some distance please check with Aldreds on the issue of availability prior to travelling. 5. Aldreds Property Consultants and associated services may offer additional services to the prospective purchaser for which they will be entitled to receive a commission.

Aldreds are pleased to be working with Mortgage Advice Bureau. They're an award-winning mortgage broker with over 1,400 advisers across the UK, and have access to over 12,000 mortgage products from over 90 lenders. Aldreds Estate Agents Ltd receive a commission of £200 on each completed case. Your home may be repossessed if you do not keep up repayments on your mortgage. There may be a fee for mortgage advice. The actual amount you pay will depend upon your circumstances. The fee is up to 1%, but a typical fee is 0.3% of the amount borrowed. Mortgage Advice Bureau is a trading name of Mortgage Seeker Limited which is an appointed representative of Mortgage Advice Bureau Limited and Mortgage Advice Bureau (Derby) Limited which are authorised and regulated by the Financial Conduct Authority. Mortgage Seeker Limited Registered Office: Lovewell Blake, Sixty Six North Quay, Great Yarmouth, Norfolk, NR30 1HE. Registered in England Number: 03721415. 6. Potential purchasers should check with their providers that the broadband and mobile phone coverage they would require is available.

17 Hall Quay, Great Yarmouth, Norfolk, NR30 1HJ
Tel: 01493 844891 Email: yarmouth@aldreds.co.uk <https://www.aldreds.co.uk/>

Registered in England Reg. No. 08945751 Registered Office: 66 North Quay, Great Yarmouth, Norfolk NR30 1HE Directors: Mark Duffield B.S.c. FRICS. Dan Crawley MNAEA Paul Lambert MNAEA