

Aldreds
Estate Agents



244 California Sands Estate, California Road,
California, Great Yarmouth, NR29 3QN

Offers In The Region Of £44,000



244 California Sands Estate

FREEHOLD Situated on a popular coastal village site Aldreds are pleased to offer this immaculately presented bespoke mid terraced holiday chalet which is being offered equipped with contents. The current owner has successfully run the chalet as a holiday let offering a high standard of presentation and very individual interior with accommodation comprising of an open plan living room/kitchen with appliances, two bedrooms and a shower room. Outside there is a small terrace, communal gardens and nearby parking. There is also unlimited use of the indoor swimming pool. The property has the benefit of double glazed windows and an early viewing is strongly recommended.

Open Plan Living Room/Kitchen

19'7" x 11'7" (5.99 x 3.54)

Part double glazed pvc entrance door, double glazed window to front aspect, attractive wood effect flooring, wall mounted tv with pull out single bed below, kitchen area fitted with white gloss base units with wood block effect worksurface over, under surface hot water heater and water softener, white sink with fountain mixer tap, built in electric oven and four ring ceramic hob, glazed display cabinet, kidney shaped solid wood breakfast bar, part tiled walls, double glazed window to rear aspect, additional built in storage and doors leading to:

Bedroom 1

11'9" x 8'0" (3.59 x 2.44)

With bespoke central fitted bed and storage cupboards/wardrobe space, double glazed window to front aspect.

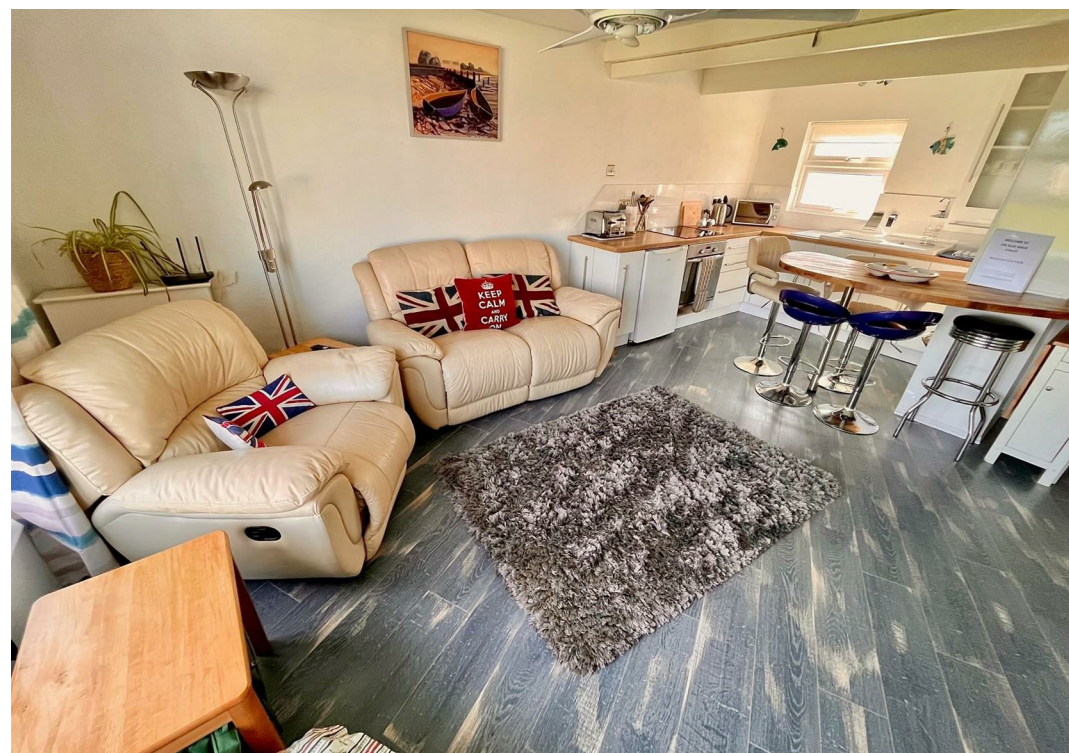
Bedroom 2

5'7" x 5'7" (1.71 x 1.72)

With hand made bunk beds and wardrobe cupboards, tv point.

Shower Room

Large tiled shower cubicle with electric shower, space saving vanity unit with wash basin, low level wc, tiled flooring, frosted double glazed window to rear aspect, double glazed door to rear aspect.





Outside

To the front of the chalet is a paved terrace beyond which are the communal lawned gardens. The chalet also has car parking nearby.

Tenure

Freehold

Services

Mains water, electric and drainage.

Council Tax

Great Yarmouth Borough Council - Band 'A' (10% reduction applies for holiday usage).

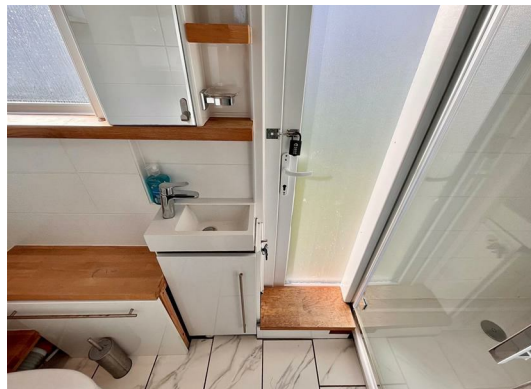
Location

California, Scratby is a coastal village approximately 5 miles north of Great Yarmouth. It has a Sandy beach backed by cliffs * Garden centre with general provisions store * First, Middle and High Schools are available in neighbouring village of Caister on Sea. Local bus services operate between the coastal villages and Great Yarmouth.

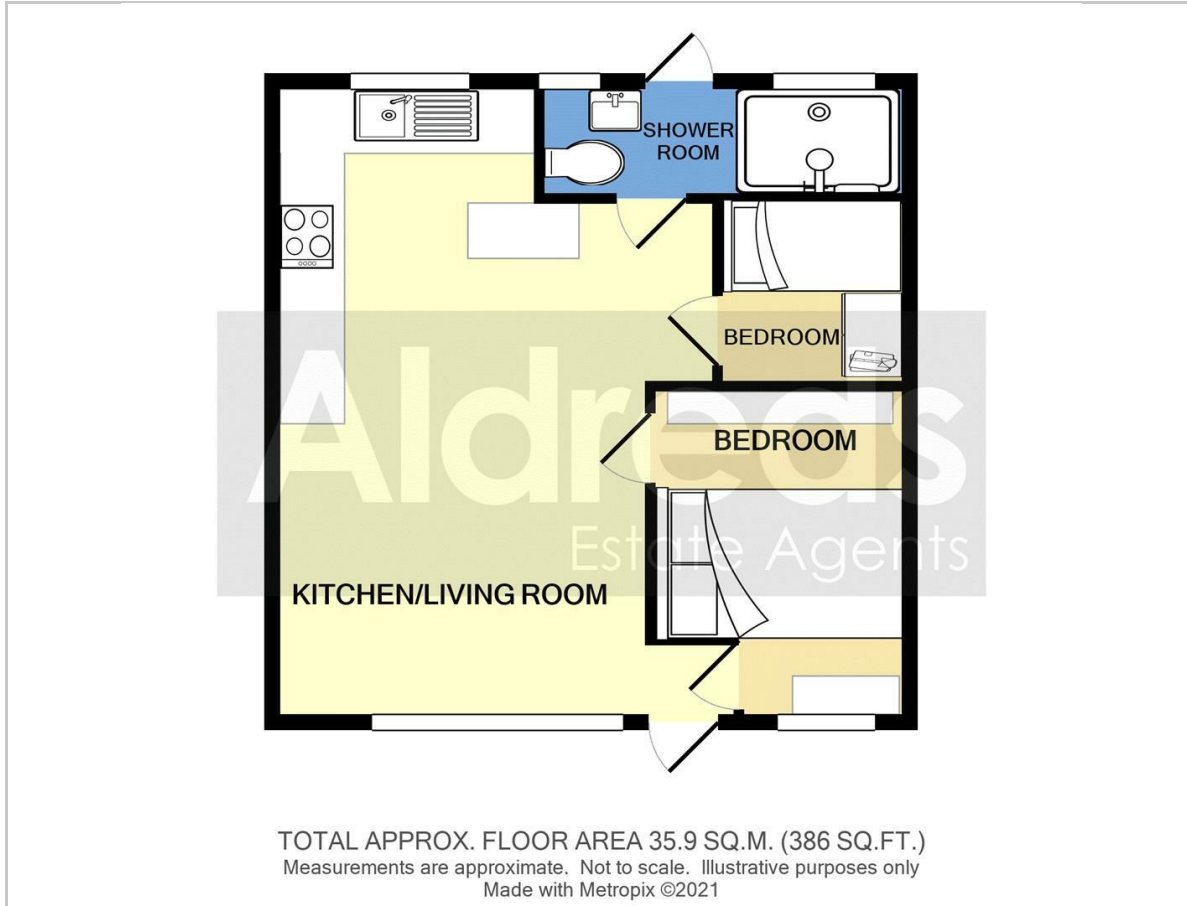
Directions

From Yarmouth proceed North along the A149 Caister Road, past the Yarmouth Stadium, at the roundabout take the left hand exit onto the Caister Bypass, continue over the next roundabout onto the single carriageway of the Caister Bypass, at the Grange Hotel roundabout take the second exit and follow the Coast Road, just past the East Coast Family Restaurant, turn right into California Road, continue for approximately one third of a mile, turn first left in to the California Sands chalet site. After a short distance turn first left and the chalet can be found straight ahead at the bottom of the car park.

Ref: Y11909/10/23/CF



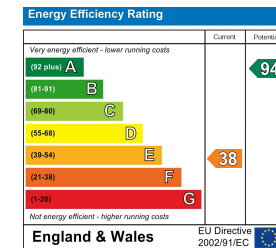
Floor Plan



Area Map



Energy Efficiency Graph



Viewing

Please contact our Aldreds Great Yarmouth Office on 01493 844891 if you wish to arrange a viewing appointment for this property or require further information.

Disclaimer
 These particulars are issued on an understanding that all negotiations shall be conducted through Messrs. Aldreds. Please note: Messrs. Aldreds for themselves and for the vendors or lessors of this property whose agents they are given notice that: 1. Particulars are set out as a general outline only for guidance of intending purchasers or lessees, and do not constitute nor constitute part of, an offer or contract. 2. All descriptions, dimensions, references to condition and necessary permissions for use and occupation, and other details are given without responsibility and any intending purchasers or tenants should not rely on them as statements or representations of fact but must satisfy themselves by inspection or otherwise as to the correctness of each of them. 3. No person in the employment of Messrs. Aldreds has any authority to make or give any representation or warranty whatever in relation to this property. 4. If you are proposing to visit the property and are traveling some distance please check with Aldreds on the issue of availability prior to traveling. 5. Aldreds Property Consultants and associated services may offer additional services to the prospective purchaser for which they will be entitled to receive a commission. Aldreds are pleased to be working with Mortgage Advice Bureau. They're an award-winning mortgage broker with over 1,400 advisers across the UK, and have access to over 12,000 mortgage products from over 90 lenders. Aldreds Estate Agents Ltd receive a commission of £200 on each completed case. Your home may be repossessed if you do not keep up repayments on your mortgage. There may be a fee for mortgage advice. The actual amount you pay will depend upon your circumstances. The fee is up to 1%, but a typical fee is 0.3% of the amount borrowed. Mortgage Advice Bureau is a trading name of Mortgage Seeker Limited which is an appointed representative of Mortgage Advice Bureau Limited and Mortgage Advice Bureau (Derby) Limited which are authorised and regulated by the Financial Conduct Authority. Mortgage Seeker Limited Registered Office: Lovewell Blake, Sixty Six North Quay, Great Yarmouth, Norfolk, NR30 1HE. Registered in England Number: 372141. 6. Potential purchasers should check with their providers that the broadband and mobile phone coverage they would require is available.

17 Hall Quay, Great Yarmouth, Norfolk, NR30 1HJ
 Tel: 01493 844891 Email: yarmouth@aldreds.co.uk <https://www.aldreds.co.uk/>

Registered in England Reg. No. 08945751 Registered Office: 66 North Quay, Great Yarmouth, Norfolk NR30 1HE Directors: Mark Duffield B.S.c. FRICS. Dan Crawley MNAEA Paul Lambert MNAEA