



461 Green Farm Chalet Park Beach Road

Scratby, Great Yarmouth, NR29 3NW

£37,000



461 Green Farm Chalet Park Beach Road

Aldreds are pleased to offer this opportunity to acquire a very well presented three bedroom end terraced holiday chalet situated in a westerly facing location with adjacent car parking. The accommodation comprises open plan living/dining/kitchen, inner hall, three bedrooms and shower room. External westerly facing terrace and communal grounds. The chalet offers uPVC sealed unit double glazed windows and is presented in good decorative order throughout. Early internal viewing is highly recommended.

Living Room Area

17'0" x 10'11" (5.19 x 3.33)

Double glazed window and part double glazed pvc door to front aspect, power points, tv point, fitted carpet, moulded breast with plasma style electric fire and wall mount tv, table and chairs, two seater leather sofa and two arm chairs, doors leading off, wood effect laminate flooring, open plan access to:-

Kitchen Area

8'5" x 6'2" (2.57 x 1.88)

Double glazed window to front aspect, range of fitted white gloss kitchen units with wall and matching base units with black granite effect roll top work surface and tiled surround, stainless steel sink and drainer with mixer tap, power points, vinyl flooring, built in electric oven with four ring ceramic hob and extractor hood over, fridge/freezer.

Inner Lobby

Wood effect laminate flooring, built in storage cupboard housing the hot water heater, doors leading off to:

Bedroom 1

9'9" x 7'11" (2.98 x 2.42)

Double glazed window to rear aspect, power points, wardrobe storage cupboard, fitted carpet, double bed, electric panel heater.

Shower Room

Tiled shower cubicle with electric shower fitting, low level wc, vanity unit with wash basin, wood effect vinyl flooring, tiled walls, frosted double glazed window to side aspect, chrome electric towel rail/radiator.

Bedroom 2

9'9" x 7'6" (2.98 x 2.30)

Double glazed window to rear aspect, two single beds, wardrobe cupboard.





Bedroom 3

9'9" x 7'6" (2.98 x 2.30)

Double glazed window to rear aspect, double bed, fitted carpet, electric panel heater, wardrobe.

Outside

The chalet faces a westerly direction with a part covered terrace and additional paved sun trap patio. Adjacent are communal grounds and parking.

Tenure

Leasehold - 99 Year lease from 1973

Ground Rent 2023 - £636.84

Maintenance Charge 2023 - £2297.72

Total - £2934.56

Services

Mains water, electric and drainage.

Council Tax

Great Yarmouth Borough Council - Band 'A'

Location

California, Scratby is a coastal village approximately 5 miles north of Great Yarmouth. It has a Sandy beach backed by cliffs * Garden centre with general provisions store * First, Middle and High Schools are available in neighbouring village of Caister on Sea. Local bus services operate between the coastal villages and Great Yarmouth.

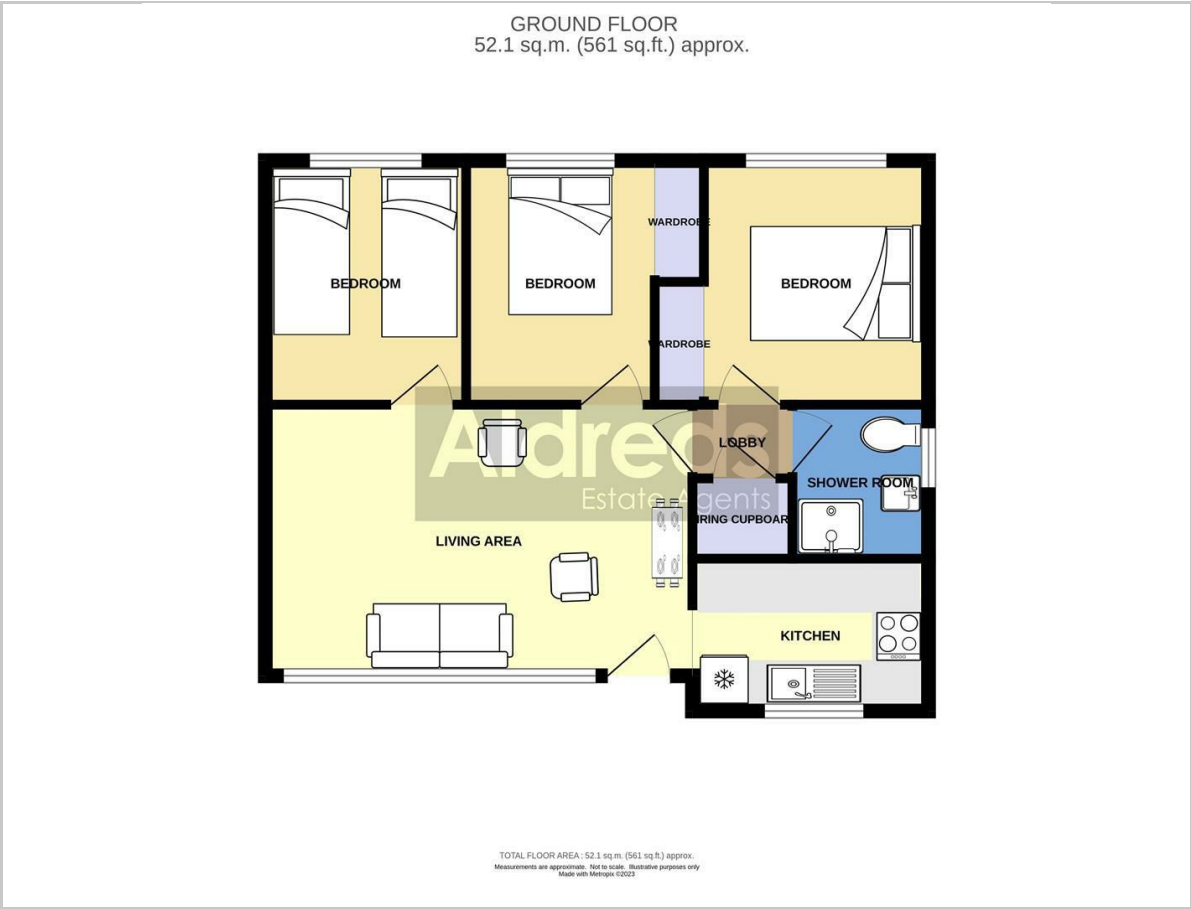
Directions

From the Yarmouth office head north along the A149 Caister Road, continue past the Yarmouth Stadium, at the roundabout turn left onto the Caister Bypass, continue over the next roundabout into Jack Chase Way, continue over the next roundabout into Scratby Road, turn right into California Road, turn left into California Sands, continue straight ahead along the access road running beside the swimming pool into Green Farm and take the first car park turning on the left where the chalet can be found in the top left corner.

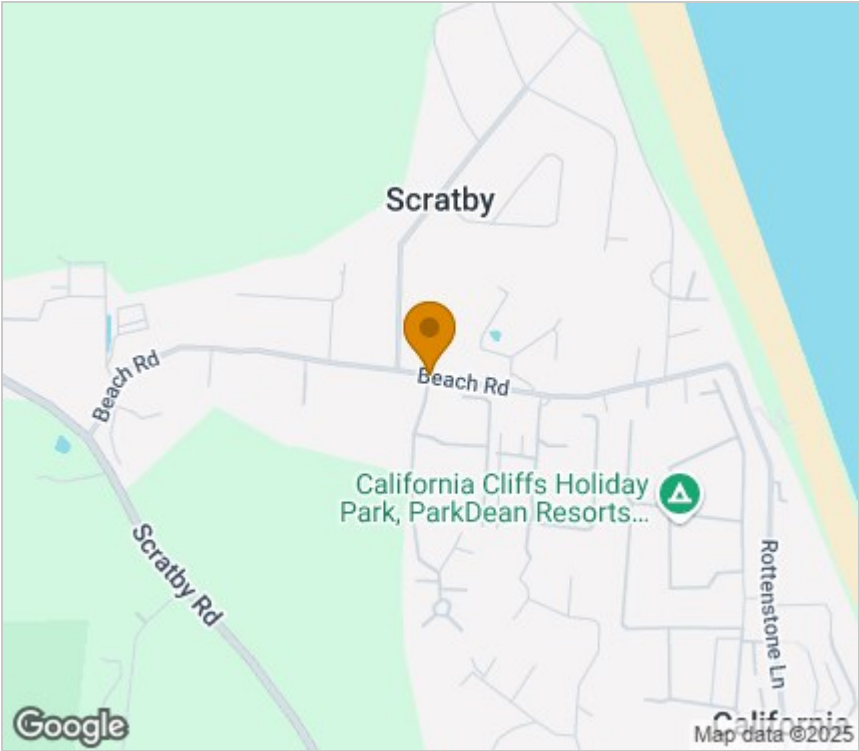
Ref: Y11876/09/23/CF



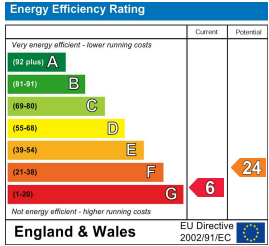
Floor Plan



Area Map



Energy Efficiency Graph



Viewing

Please contact our Aldreds Great Yarmouth Office on 01493 844891 if you wish to arrange a viewing appointment for this property or require further information.

Disclaimer
These particulars are issued on an understanding that all negotiations shall be conducted through Messrs. Aldreds. Please note: Messrs. Aldreds for themselves and for the vendors or lessors of this property whose agents they are given notice that: 1. Particulars are set out as a general outline only for guidance of intending purchasers or lessees, and do not constitute nor constitute part of, an offer or contract. 2. All descriptions, dimensions, references to condition and necessary permissions for use and occupation, and other details are given without responsibility and any intending purchasers or tenants should not rely on them as statements or representations of fact but must satisfy themselves by inspection or otherwise as to the correctness of each of them. 3. No person in the employment of Messrs. Aldreds has any authority to make or give any representation or warranty whatever in relation to this property. 4. If you are proposing to visit the property and are traveling some distance please check with Aldreds on the issue of availability prior to traveling. 5. Aldreds Property Consultants and associated services may offer additional services to the prospective purchaser for which they will be entitled to receive a commission. Aldreds are pleased to be working with Mortgage Advice Bureau. They're an award-winning mortgage broker with over 1,400 advisers across the UK, and have access to over 12,000 mortgage products from over 90 lenders. Aldreds Estate Agents Ltd receive a commission of £200 on each completed case. Your home may be repossessed if you do not keep up repayments on your mortgage. There may be a fee for mortgage advice. The actual amount you pay will depend upon your circumstances. The fee is up to 1%, but a typical fee is 0.3% of the amount borrowed. Mortgage Advice Bureau is a trading name of Mortgage Seeker Limited which is an appointed representative of Mortgage Advice Bureau Limited and Mortgage Advice Bureau (Derby) Limited which are authorised and regulated by the Financial Conduct Authority. Mortgage Seeker Limited Registered Office: Lovewell Blake, Sixty Six North Quay, Great Yarmouth, Norfolk, NR30 1HE. Registered in England Number: 372141. 6. Potential purchasers should check with their providers that the broadband and mobile phone coverage they would require is available.