



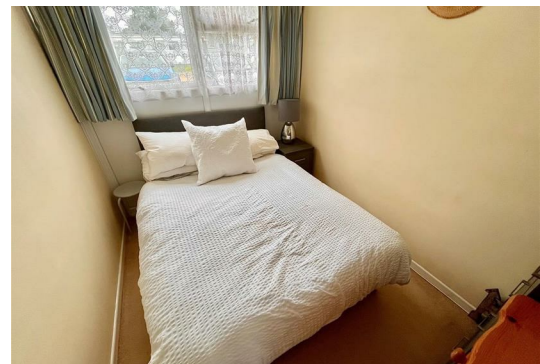
93 Belle Aire Beach Road

Hemsby, Great Yarmouth, NR29 4HZ

£31,000



Aldreds are pleased to offer this well presented end terraced holiday chalet situated in a sought after holiday park within the popular coastal village of Hemsby with a sought after south facing aspect. The property offers accommodation comprising open Lounge/Kitchen Area, two bedrooms, shower room, separate wc. Outside are communal grounds, nearby parking and on-site facilities. The property also benefits from double glazed windows is sold fully equipped and would make an ideal investment property.



Open Plan Lounge/Kitchen Area 16'2" x 10'1" (4.95m x 3.08m)

Lounge Area

Corner sofa, table and chairs, fitted carpet, tv point, electric fire.

Kitchen Area

Fitted modern grey shaker style wall and matching base units with black work surface over, single drainer one and a half bowl sink unit with mixer taps, recess with fridge, electric cooker, part tiled walls, tiled flooring, doors leading off to:

Bedroom 1 9'10" x 7'6" (3.0m x 2.31m)

Double glazed window to rear aspect, power points, double bed, wardrobe, drawers, fitted carpet.

Bedroom 2 9'10" x 7'6" (3.0m x 2.31m)

Double glazed window to rear aspect, two single beds, power points, wardrobe, fitted carpet.

Shower Room

Tiled shower cubicle with electric shower fitting, pedestal wash basin, fitted carpet, door to:

Separate WC

Low level wc, fitted carpet, frosted double glazed window to front aspect.

Outside

The property benefits from use of on-site facilities, communal parking areas nearby and communal lawned grounds. Immediately in front of the chalet is an area of paved terrace facing a southerly direction.

Tenure

Leasehold.

99 years from 1974.

Annual site charges approximately £2700 plus council tax

Site open 1st March - 14th January (open for Christmas)

It is also possible to pay additional fees to allow occupancy beyond October to Mid February allowing 50 week occupancy (fees to be confirmed).

Dogs allowed

Services

Mains water, electric and drainage.

Council Tax

Great Yarmouth Borough Council - Band 'A' (10% reduction applies for holiday use).

Location

Hemsby is a coastal village approximately 7 miles north of Great Yarmouth. The tourist-based part of the village lies along Beach Road and is commonly known as Hemsby Beach. At the beach end of the road are a number of cafes, shops and amusement arcades, ten-pin bowling, bingo, a play area and many different machines. A variety of seaside-style cafes and restaurants are available, offering sit-down meals, take-away fish and chips and Chinese food. Fun fairs, crazy golf courses and children's rides also feature on a number of sites along the street.

Directions

From the Yarmouth office head north along the A149 Caister Road, continue past the Yarmouth Stadium, at the roundabout turn left onto the Caister Bypass, continue over the next roundabout into Jack Chase Way, continue over the next roundabout into Scratby Road, continue into Yarmouth Road, continue into Kings Way, at the mini roundabout turn right into Beach Road, turn right into Belle Aire Chalet Park, continue straight ahead and the chalet can be found part way down on the left hand side.

Ref: Y11809/07/23/CF

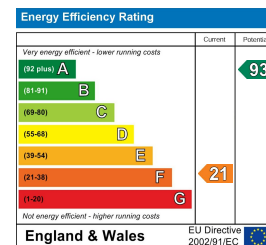
Area Map



Floor Plans



Energy Efficiency Graph



Disclaimer

These particulars are issued on an understanding that all negotiations shall be conducted through Messrs. Aldreds. Please note: Messrs. Aldreds for themselves and for the vendors or lessors of this property whose agents they are given notice that: 1. Particulars are set out as a general outline only for guidance of intending purchasers or lessees, and do not constitute nor constitute part of, an offer or contract. 2. All descriptions, dimensions, references to condition and necessary permissions for use and occupation, and other details are given without responsibility and any intending purchasers or tenants should not rely on them as statements or representations of fact but must satisfy themselves by inspection or otherwise as to the correctness of each of them. 3. No person in the employment of Messrs. Aldreds has any authority to make or give any representation or warranty whatever in relation to this property. 4. If you are proposing to visit the property and are traveling some distance please check with Aldreds on the issue of availability prior to traveling. 5. Aldreds Property Consultants and associated services may offer additional services to the prospective purchaser for which they will be entitled to receive a commission.

Aldreds are pleased to be working with Mortgage Advice Bureau. They're an award-winning mortgage broker with over 1,400 advisers across the UK, and have access to over 12,000 mortgage products from over 90 lenders. Aldreds Estate Agents Ltd receive a commission of £200 on each completed case. Your home may be repossessed if you do not keep up repayments on your mortgage. There may be a fee for mortgage advice. The actual amount you pay will depend upon your circumstances. The fee is up to 1%, but a typical fee is 0.3% of the amount borrowed. Mortgage Advice Bureau is a trading name of Mortgage Seeker Limited which is an appointed representative of Mortgage Advice Bureau Limited and Mortgage Advice Bureau (Derby) Limited which are authorised and regulated by the Financial Conduct Authority. Mortgage Seeker Limited Registered Office: Lovewell Blake, Sixty Six North Quay, Great Yarmouth, Norfolk, NR30 1HE. Registered in England Number: 372141. 6. Potential purchasers should check with their providers that the broadband and mobile phone coverage they would require is available.

17 Hall Quay, Great Yarmouth, Norfolk, NR30 1HJ
Tel: 01493 844891 Email: yarmouth@aldreds.co.uk <https://www.aldreds.co.uk/>

Registered in England Reg. No. 08945751 Registered Office: 66 North Quay, Great Yarmouth, Norfolk NR30 1HE Directors: Mark Duffield B.S.c. FRICS. Dan Crawley MNAEA Paul Lambert MNAEA