

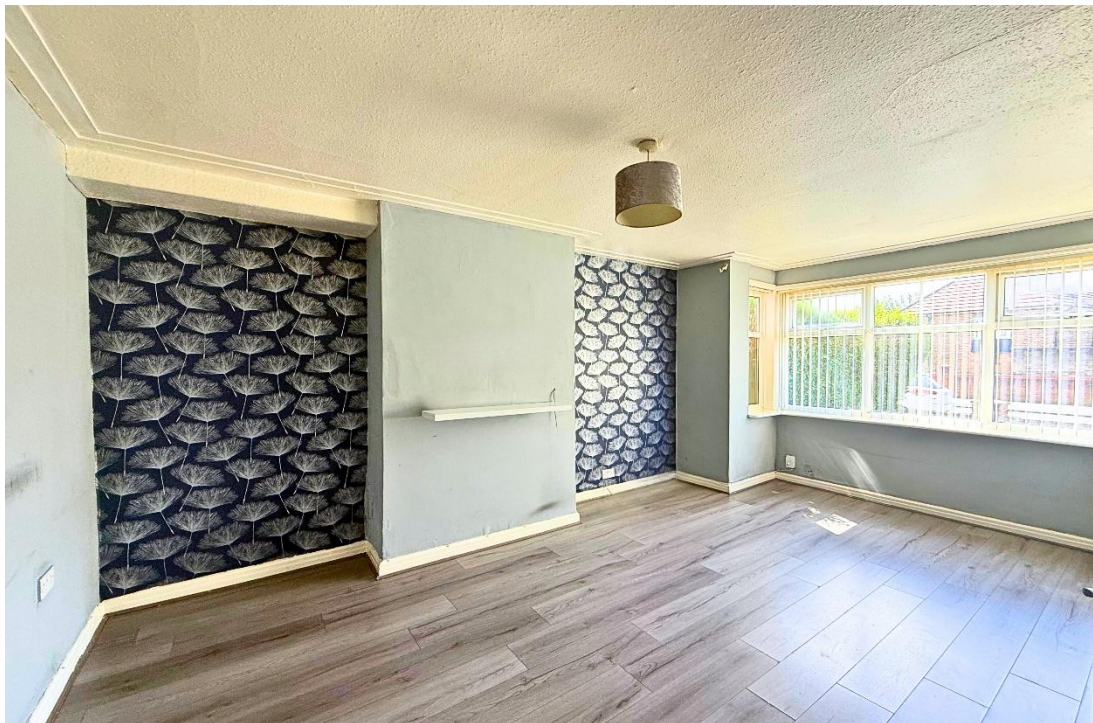


3  1  1 

Hathersage Road , Huyton, Huyton

£130,000

BELVOIR!



Key Features

- > NO CHAIN
- > LARGE GARDEN
- > DRIVEWAY
- > FREEHOLD
- > THREE BEDROOMS
- > EPC C



Welcome to Hathersage Road, where this well-proportioned three-bedroom terraced house combines comfort and convenience, making it an excellent choice for families, landlords, investors, or first-time buyers. With no onward chain, the property is primed for a smooth and swift transition to its new owners.

Upon entering, you're welcomed by a spacious and well-lit interior that exudes a warm, homely atmosphere. The ground floor features a thoughtfully designed layout, including a hallway with ample storage, a generously sized lounge completes with a charming bay window, and a kitchen that overlooks the private rear garden, creating a seamless connection between indoor and outdoor living.

Upstairs, the first floor comprises two generously sized double bedrooms, each offering plenty of space for relaxation and rest. The third bedroom provides versatile options, whether as a child's room, home office, or guest bedroom, ensuring flexibility for various needs.

The expansive rear garden is the true heart of this home—a lush, green space perfect for outdoor gatherings, gardening enthusiasts, or simply unwinding in a tranquil setting. To the front, a private driveway offers the convenience of off-street parking, a rare advantage in such a well-connected area. This home on Hathersage Road presents a fantastic opportunity to enjoy a comfortable lifestyle in a vibrant community with excellent local amenities and transport links, all without the delays typically associated with an onward chain.





HALLWAY

7'1" x 14'5" (2.2m x 4.4m)

Laminate to floor. Radiator to wall. Stairs. Access to lounge & kitchen.

LOUNGE

14'12" x 14'5" (4.6m x 4.4m)

Laminate to floor. Radiator to wall. Bay window to front aspect.

KITCHEN

18'2" x 12'8" (5.5m x 3.9m)

Radiator to wall. access to rear garden. Wall & base units, Sink. Window to rear aspect.

LANDING

11'10" x 10'2" (3.6m x 3.1m)

Carpet to floor. Access to all upper rooms.

BEDROOM ONE

12'0" x 17'6" (3.7m x 5.3m)

Carpet to floor. Bay window to front aspect. Radiator to wall.

BEDROOM TWO

8'12" x 17'6" (2.7m x 5.3m)

Carpet to floor. Bay window to rear aspect. Radiator to wall.

BEDROOM THREE

10'10" x 11'4" (3.3m x 3.4m)

Carpet to floor. Bay window to rear aspect. Radiator to wall.

BATHROOM

7'6" x 13'2" (2.3m x 4m)

Vinyl to floor. Window to rear aspect. Toilet, Bath. Basin.

DISCLAIMER

We endeavour to make our property particulars as informative & accurate as possible, however, they cannot be relied upon. We recommend all systems and appliances be tested as there is no guarantee as to their ability or efficiency. All photographs, measurements & floorplans have been taken as a guide only and are not precise. If you require clarification or further information on any points, please contact us, especially if you are travelling some distance to view. Solicitors should confirm moveable items described in the sales particulars are, in fact included in the sale due to changes or negotiations. We recommend a final inspection and walk through prior to exchange of contracts. Fixtures & fittings other than those mentioned are to be agreed with the seller.

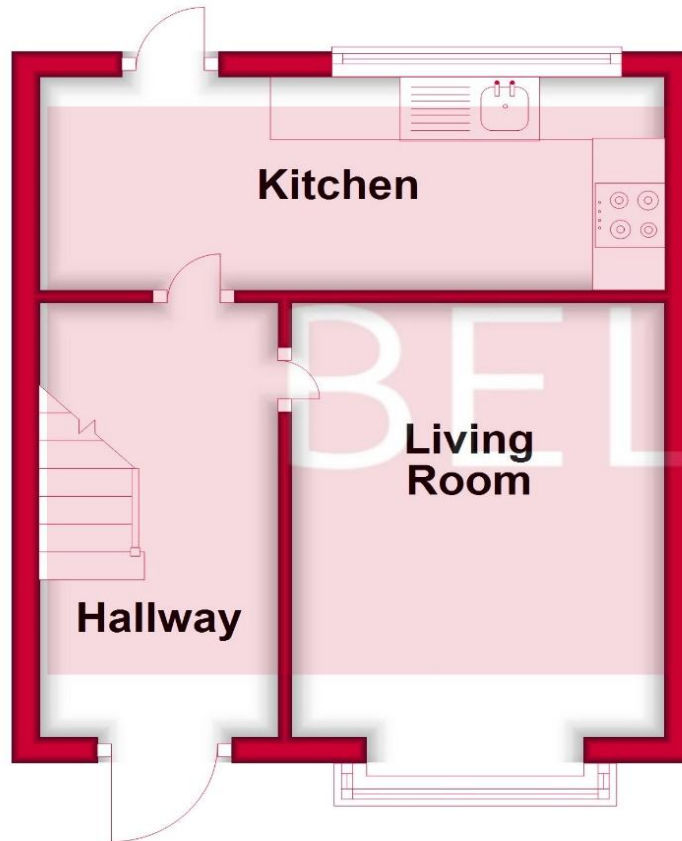




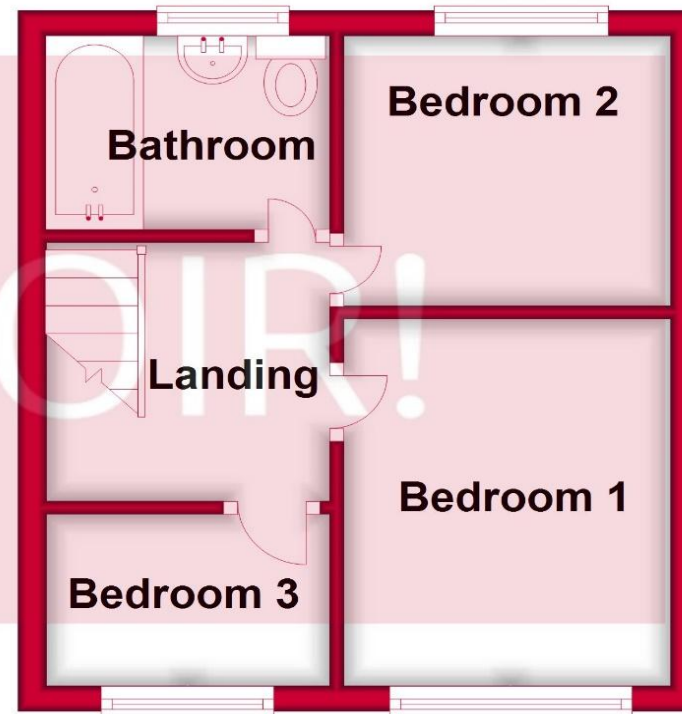




Ground Floor



First Floor



Floor plans where included are not to scale and accuracy is not guaranteed. If you require clarification or further information on any points please contact us. All measurements are approximate

Plan produced using PlanUp.



Contact us today to arrange a viewing...

BELVOIR!

<https://www.belvoir.co.uk/liverpool-prescot-estate-agents/>

0151 430 0041