

166 Intake Road, Bradford, BD2 3NE
£89,950

Nestled on Intake Road in Bradford, this charming property offers a delightful living experience with its well-designed layout and modern features. Spanning an area of 667 square feet, the home boasts an inviting open plan lounge and kitchen, perfect for both relaxation and entertaining. The space is filled with natural light, thanks to the UPVC windows that enhance the overall ambiance.

This residence comprises two comfortable bedrooms, providing ample space for rest and privacy. The bathroom is conveniently located, ensuring ease of access for all occupants. Additionally, the property features a lower basement room, which can serve various purposes, whether as a home office, storage space, or a creative studio.

Locate

The Property Experts

Locate Properties UK LTD

29-31 North Parade, Bradford, West Yorkshire, BD1 3JL

t. +44 (0) 01274 720 900



@locatehomesbfd

e. info@locatehomes.co.uk



www.locatehomes.co.uk

Registered in England & Wales No. 5161728

LOUNGE / KITCHEN

14'3" x 13'10" (4.345 x 4.231)



BEDROOM TWO

17'7" x 12'0" (5.383 x 3.664)



LOWER GROUND FLOOR

13'9" x 13'2" (4.210 x 4.030)

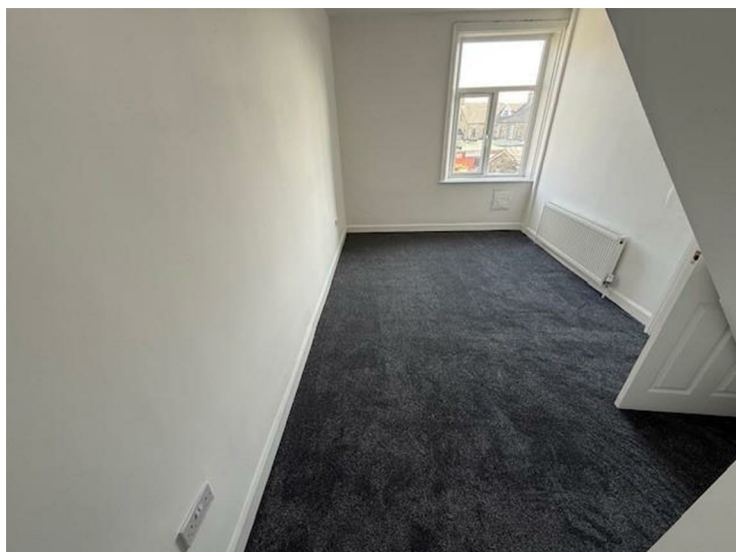


BATHROOM



BEDROOM ONE

16'7" x 9'4" (5.080 x 2.865)



SEPERATE TOILET

EXTERIOR

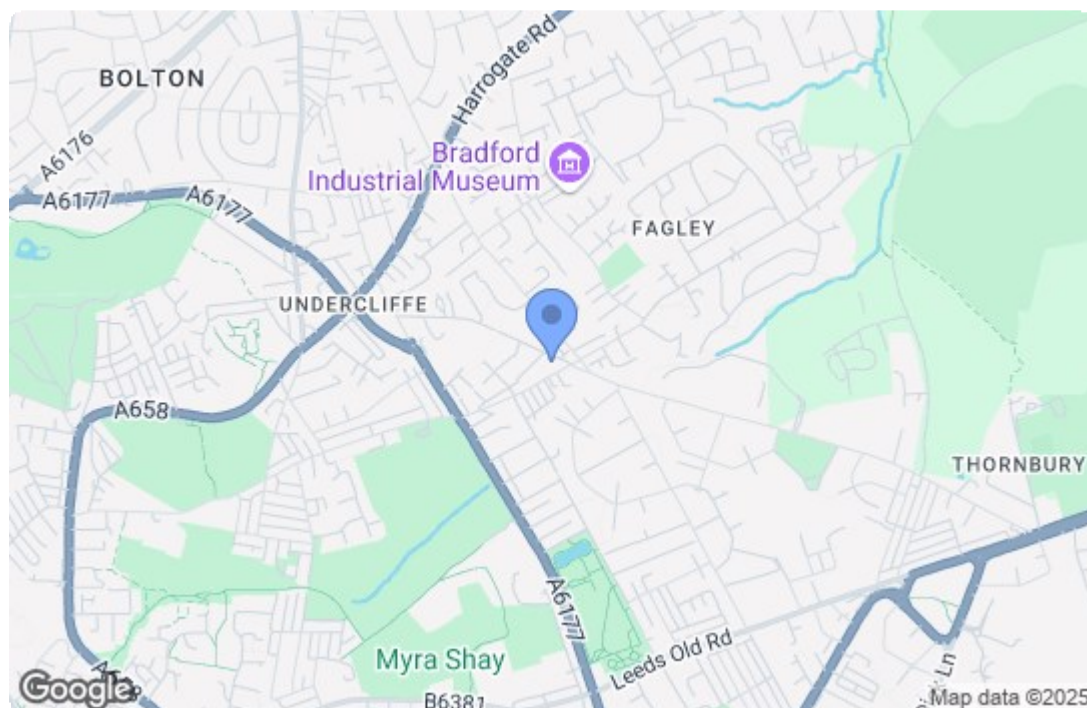



ANGLE TWO



KITCHEN AREA





Energy Efficiency Rating		Current	Potential
Very energy efficient - lower running costs			
(92 plus) A			87
(81-91) B			
(69-80) C			
(55-68) D		56	
(39-54) E			
(21-38) F			
(1-20) G			
Not energy efficient - higher running costs			
England & Wales		EU Directive 2002/91/EC	
Environmental Impact (CO ₂) Rating			
		Current	Potential
Very environmentally friendly - lower CO ₂ emissions			
(92 plus) A			
(81-91) B			
(69-80) C			
(55-68) D			
(39-54) E			
(21-38) F			
(1-20) G			
Not environmentally friendly - higher CO ₂ emissions			
England & Wales		EU Directive 2002/91/EC	