



2 Spring Street, Bradford, West Yorkshire BD10 8ST Offers In The Region Of £130,000

Locate are pleased to present a most unusual and deceptively spacious three bedroom end of terraced property modernised yet retaining its original character & charm to provide fantastic family house. Situated in a vibrant position & close to local amenities. The property would benefit from some modernisation but is perfectly liveable in its current condition.

The property briefly comprises of a lounge, dining room and galley kitchen to the downstairs and three bedrooms and a family bathroom on the first floor.

The house benefits from gas central heating and UPVC windows.

Please note this property has no garden / yard to rear.

Locate

The Property Experts

Locate Properties UK LTD

29-31 North Parade, Bradford, West Yorkshire, BD1 3JL

t. +44 (0) 01274 720 900



@locatehomesbfd

e. info@locatehomes.co.uk



www.locatehomes.co.uk

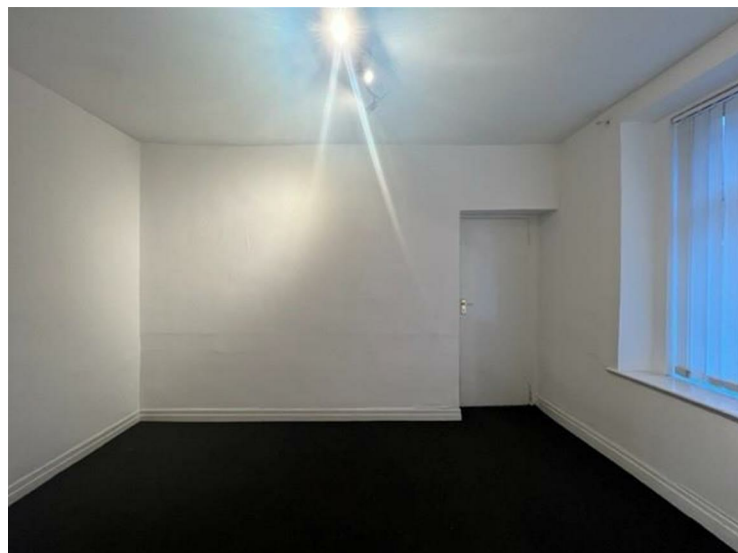
Registered in England & Wales No. 5161728

ENTRANCE/VESTIBULE

LOUNGE



DINING ROOM



ANGLE TWO



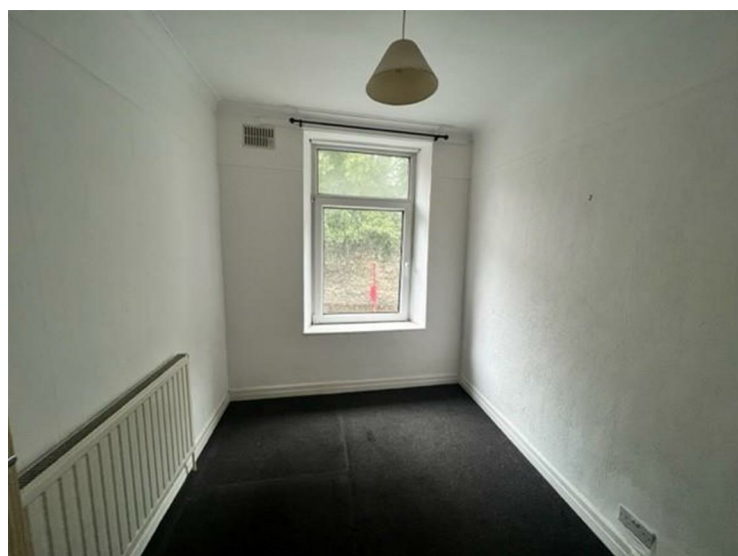
BEDROOM ONE



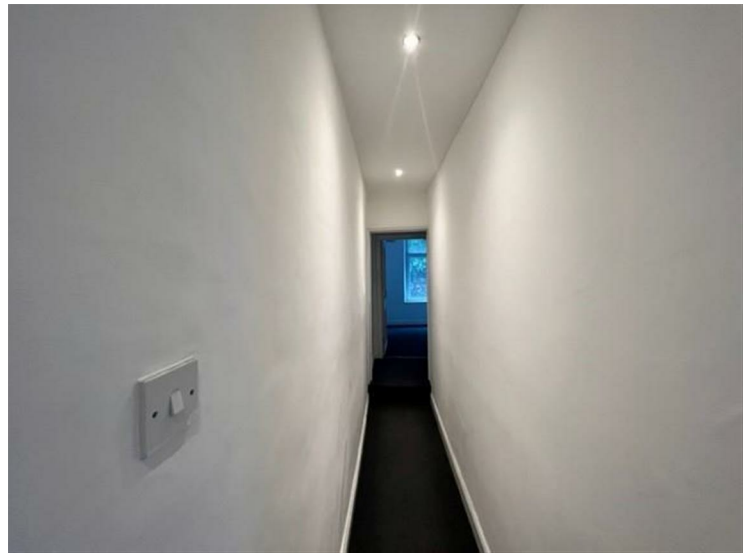
KITCHEN



BEDROOM TWO



BEDROOM THREE



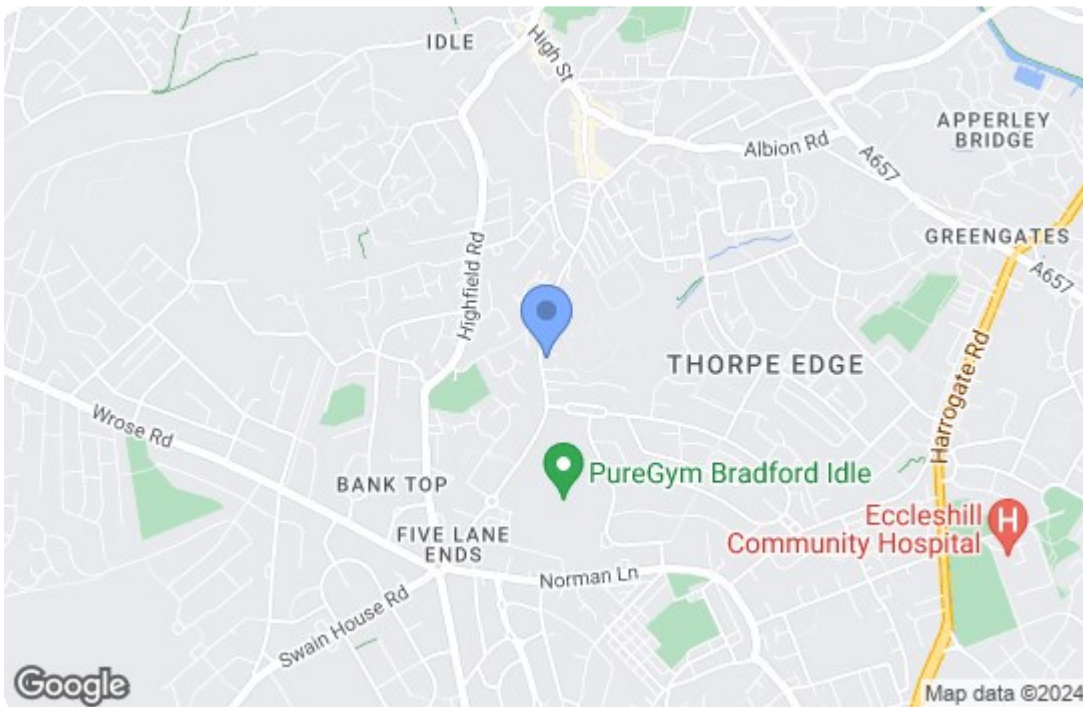
BATHROOM



EXTERIOR



HALLWAY



| Energy Efficiency Rating | | Current | Potential |
|-----------------------------------------------------------------|--|-------------------------|-----------|
| Very energy efficient - lower running costs | | | |
| (92 plus) A | | | 87 |
| (81-91) B | | | |
| (69-80) C | | | |
| (55-68) D | | 60 | |
| (39-54) E | | | |
| (21-38) F | | | |
| (1-20) G | | | |
| Not energy efficient - higher running costs | | | |
| England & Wales | | EU Directive 2002/91/EC | |
| Environmental Impact (CO ₂) Rating | | Current | Potential |
| Very environmentally friendly - lower CO ₂ emissions | | | |
| (92 plus) A | | | |
| (81-91) B | | | |
| (69-80) C | | | |
| (55-68) D | | | |
| (39-54) E | | | |
| (21-38) F | | | |
| (1-20) G | | | |
| Not environmentally friendly - higher CO ₂ emissions | | | |
| England & Wales | | EU Directive 2002/91/EC | |