

First Floor Studio Apartment, 22 Stonebridge Clevedon BS21 5BZ

£650 Per Calendar Month

marktempler

RESIDENTIAL LETTINGS





 PROPERTY TYPE Upper Floor Flat	 LOCATION Central Clevedon
 BEDROOMS 1	 RECEPTION ROOMS 1
 BATHROOMS 1	 WARMTH Double glazing and electric heaters
 PARKING Resident's parking	 OUTSIDE SPACE Communal Grounds
 EPC RATING E	 COUNCIL TAX BAND A



- Attractive first floor studio apartment
- Bright and airy bedsitting room accommodation
- Security Deposit - £750.00
- Holding Deposit - £150.00
- Tenancy Term - 6 months
- EPC Rating - E
- Council Tax Rating - A

What will it cost to rent this property?

When you submit a completed application form, we will discuss the details with the Landlord. If the Landlord is happy to proceed you will be required to pay:

1. Holding deposit, equivalent to 1 week's rent. This will reserve the property.

Once references are complete, you will be asked to pay:

2. First month's rent
3. Security deposit, equivalent to 5 weeks' rent (for rents under £50,000 per year). This covers damages or defaults on the part of the tenant during the tenancy.



Separate kitchen area

Shower room and dressing area

Surrounded by communal grounds with residents parking

Close to riverbank and countryside walks

Available From

The property is available to move into from approximately 30th January 2025



Utilities

Mains water and drainage, mains electric supply and heating. This information has been provided by the Landlord and is correct to the best of our knowledge.

Broadband

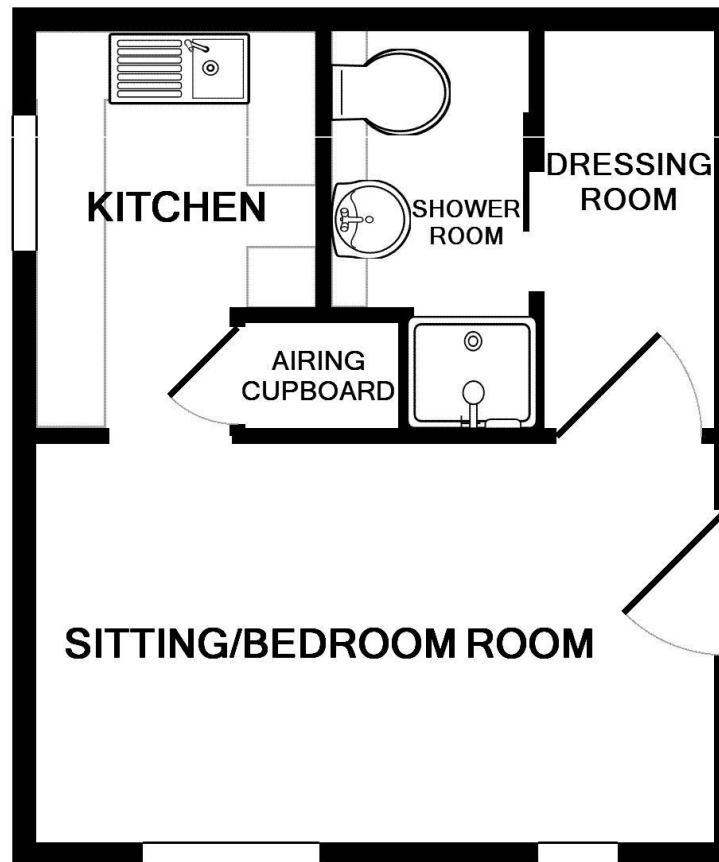
Ultrafast broadband available with highest available download speed 1000 Mbps and highest available upload speed 1000Mbps. This information is sourced via checker.ofcom.org.uk, we advise you make your own enquires.

Mobile phone signal/coverage

There is limited to likely coverage indoors depending on the provider and likely coverage outdoors with a range of providers. This information is sourced via checker.ofcom.org.uk, we advise you make your own enquires.

For the latest properties and local news follow Mark Templer Residential Lettings on:





Whilst every attempt has been made to ensure the accuracy of the floor plan contained here, measurements of doors, windows, rooms and any other items are approximate and no responsibility is taken for any error, omission, or mis-statement. This plan is for illustrative purposes only and should be used as such by any prospective purchaser. The services, systems and appliances shown have not been tested and no guarantee as to their operability or efficiency can be given

Made with Metropix ©2014