

24 The Glebe, Wrington, BS40 5LX







£950 Per calendar month

marktempler

RESIDENTIAL LETTINGS





 PROPERTY TYPE End Terrace House	 LOCATION Wroughton
 BEDROOMS 2	 RECEPTION ROOMS 1
 BATHROOMS 1	 WARMTH Electric heating and double glazing
 PARKING Off street parking	 OUTSIDE SPACE Rear Garden
 EPC RATING D	 COUNCIL TAX BAND B

- Smart modern corner house
- Two good size bedrooms
- Security Deposit - £1096.15
- Holding Deposit - £219.23
- Tenancy term - 12 Months
- Council Tax Band - B
- EPC - D

What will it cost to rent this property?

When you submit a completed application form, we will discuss the details with the Landlord. If the Landlord is happy to proceed you will be required to pay:

1. Holding deposit, equivalent to 1 week's rent. This will reserve the property.

Once references are complete, you will be asked to pay:

2. First month's rent
3. Security deposit, equivalent to 5 weeks' rent (for rents under £50,000 per year). This covers damages or defaults on the part of the tenant during the tenancy.



Bright and airy lounge/dining room
Modern white bathroom suite with shower over the bath
Popular village location
Allocated off street parking space

Available From

This property is available to move into from approx 4th October



Utilities

Mains water and drainage Mains electric supply Electric heating This information has been provided by the Landlord and is correct to the best of our knowledge

Broadband

Broadband - Ultrafast broadband available with highest available download speed 1000 Mbps and highest available upload speed 220 Mbps. This information is sourced via checker.ofcom.org.uk, we advise you make your own enquires

Mobile phone signal/coverage

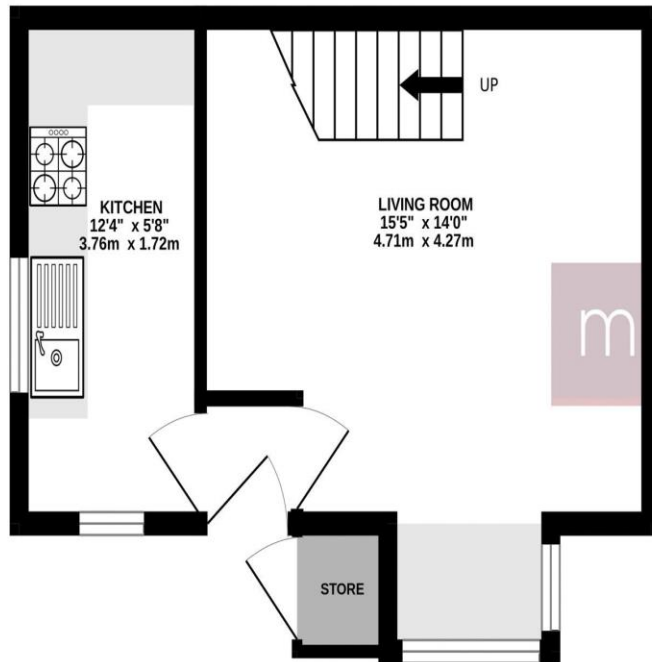
You are likely to have coverage indoor and outside the property with a range of providers This information is sourced via checker.ofcom.org.uk, we advise you make your own enquires

For the latest properties and local news follow Mark Templer Residential Lettings on:

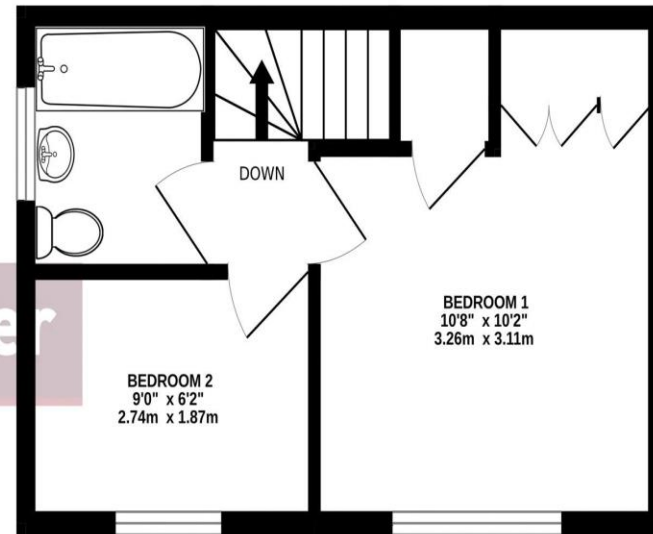




GROUND FLOOR
258 sq.ft. (24.0 sq.m.) approx.



1ST FLOOR
243 sq.ft. (22.5 sq.m.) approx.



marktempler

TOTAL FLOOR AREA : 501 sq.ft. (46.5 sq.m.) approx.

Whilst every attempt has been made to ensure the accuracy of the floorplan contained here, measurements of doors, windows, rooms and any other items are approximate and no responsibility is taken for any error, omission or mis-statement. This plan is for illustrative purposes only and should be used as such by any prospective purchaser. The services, systems and appliances shown have not been tested and no guarantee as to their operability or efficiency can be given.
Made with Metropix ©2024