

28 Durbin Park Road Clevedon BS21 7EU








£1,600 Per Calendar Month

marktemppler

RESIDENTIAL LETTINGS





 PROPERTY TYPE Detached chalet bungalow	 LOCATION Upper Clevedon
 BEDROOMS 4	 RECEPTION ROOMS 2
 BATHROOMS 2	 WARMTH Gas central heating and double glazing
 PARKING Garage and off street parking	 OUTSIDE SPACE Front and rear gardens
 EPC RATING	 COUNCIL TAX BAND E

- Double fronted detached dormer bungalow
- Bright and airy four size double bedroom accommodation
- Security Deposit - £1846.15
- Holding Deposit - £369.23
- Term - 6 months
- EPC Rating - TBC
- Council Tax Band - E

What will it cost to rent this property?

When you submit a completed application form, we will discuss the details with the Landlord. If the Landlord is happy to proceed you will be required to pay:

1. Holding deposit, equivalent to 1 week's rent. This will reserve the property.

Once references are complete, you will be asked to pay:

2. First month's rent
3. Security deposit, equivalent to 5 weeks' rent (for rents under £50,000 per year). This covers damages or defaults on the part of the tenant during the tenancy.



Large lounge with glorious sea views
Contemporary bathroom with shower and separate en suite shower room
Favoured hillside location in upper Clevedon

Large garage and driveway with off street parking

Available From

This property is available to move into now The Landlord will maintain the front and rear gardens



Utilities

Mains water and drainage Mains electric supply Gas central heating This information has been provided by the Landlord and is correct to the best of our knowledge

Broadband

Broadband - Ultrafast broadband available with highest available download speed 1000 Mbps and highest available upload speed 220 Mbps. This information is sourced via checker.ofcom.org.uk, we advise you make your own enquires

Mobile Phone Signal/Coverage

You will have limited coverage indoor and likely to have coverage outside the property with a range of providers This information is sourced via checker.ofcom.org.uk, we advise you make your own enquires

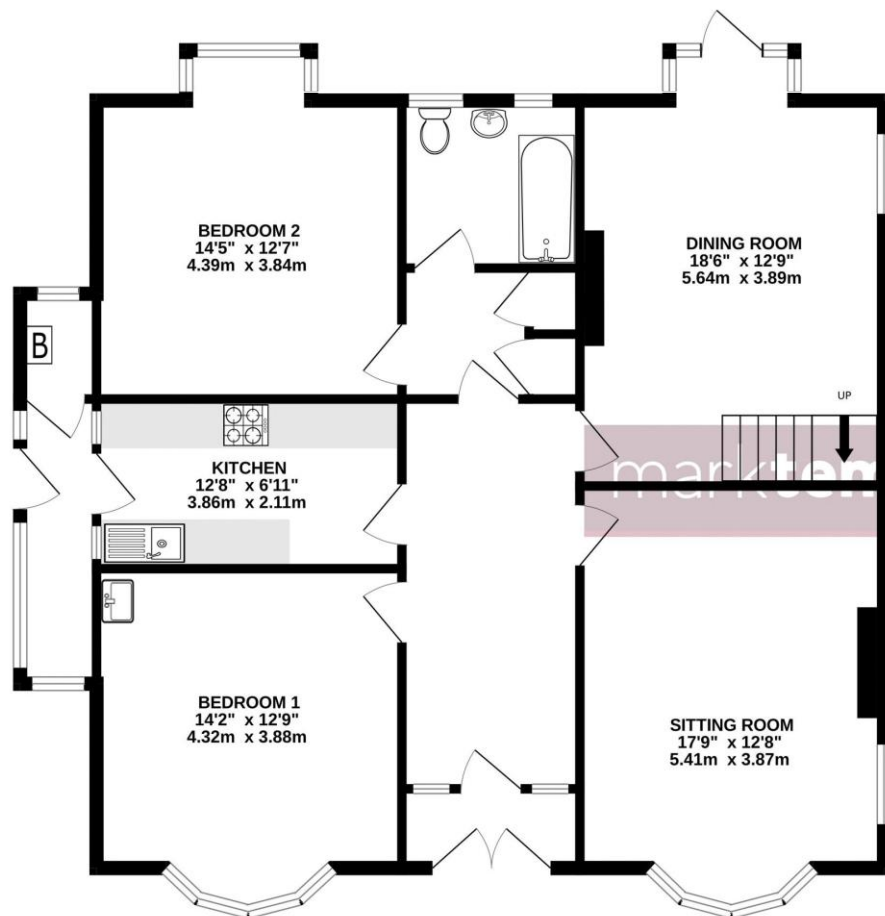


For the latest properties and local news follow Mark Templer Residential Lettings on:

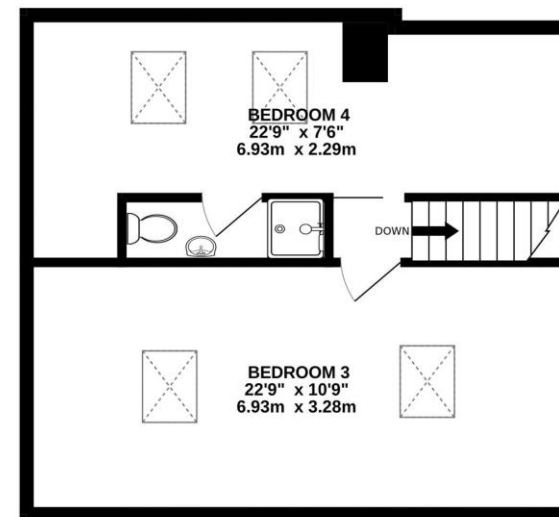




GROUND FLOOR
1122 sq.ft. (104.3 sq.m.) approx.



1ST FLOOR
460 sq.ft. (42.7 sq.m.) approx.



TOTAL FLOOR AREA : 1582 sq.ft. (147.0 sq.m.) approx.

Whilst every attempt has been made to ensure the accuracy of the floorplan contained here, measurements of doors, windows, rooms and any other items are approximate and no responsibility is taken for any error, omission or mis-statement. This plan is for illustrative purposes only and should be used as such by any prospective purchaser. The services, systems and appliances shown have not been tested and no guarantee as to their operability or efficiency can be given.

Made with Metropix ©2024