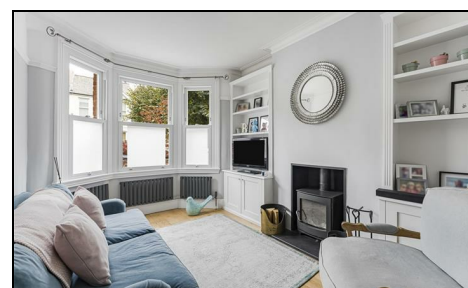
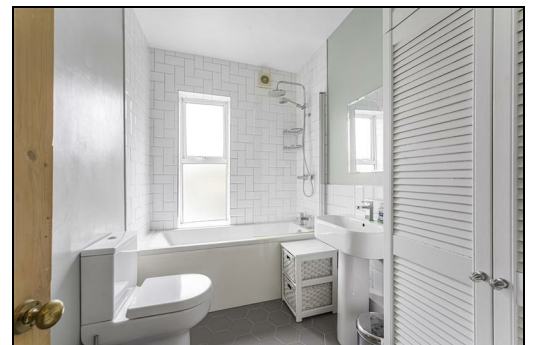
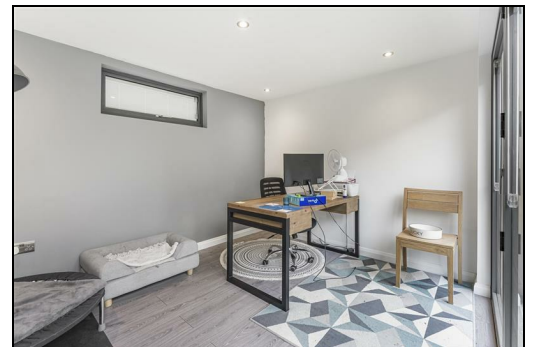


**Edna Road
Raynes Park, SW20 8BS**

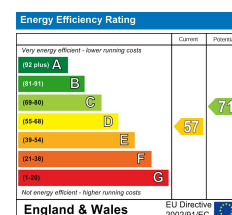
£850,000 Freehold



This beautiful, brick fronted TWO DOUBLE BEDROOM, end of terrace Edwardian Apostle (circa 1903) has a stunning, "apex roof" extended kitchen/dining/family room with bifolding doors and a lovely West facing garden with side access and a superb home office with under floor heating and sliding doors. There is also a charming, separate front reception room with wood burner, a hallway with storage and downstairs W.C, two good size double bedrooms and a modern family bathroom. Perfectly positioned on Edna Road with in easy access to both Raynes Park and Wimbledon Chase Station and Shops. Potential to further extend into the loft to create an additional bedroom and bathroom **subject to usual consents.**



- Two Double Bedroom With Stunning Apex Roof Rear Extension
- Brick Fronted Edwardian Apostle House Circa 1903
- End Of Terrace With Side Access
- West Facing Garden And Superb Home Office
- Gorgeous Open Plan Kitchen/Dining/Family Room
- Charming Separate Front Reception Room
- Downstairs W.C And Wood Burner
- Bifolding Doors, Modern Bathroom
- Potential To Extend S.T.P.P
- EPC - D Council Tax Band - E



For Free Mortgage Quote and Best Mortgage Rates, call Ellisons Mortgage Advisor on 0208 944 9595



Although these particulars are believed to be correct, their accuracy is not guaranteed and they do not form part of any contract.

Celebrating 30 years
of successful Sales and
Lettings in Merton

