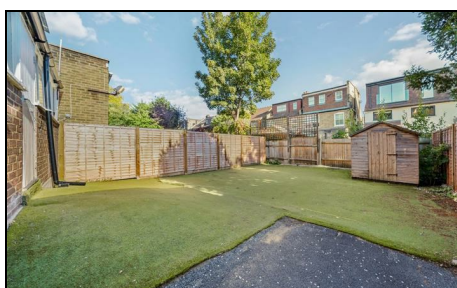


**Worple Road  
West Wimbledon, SW20 8RH**

**£925,000 Freehold**

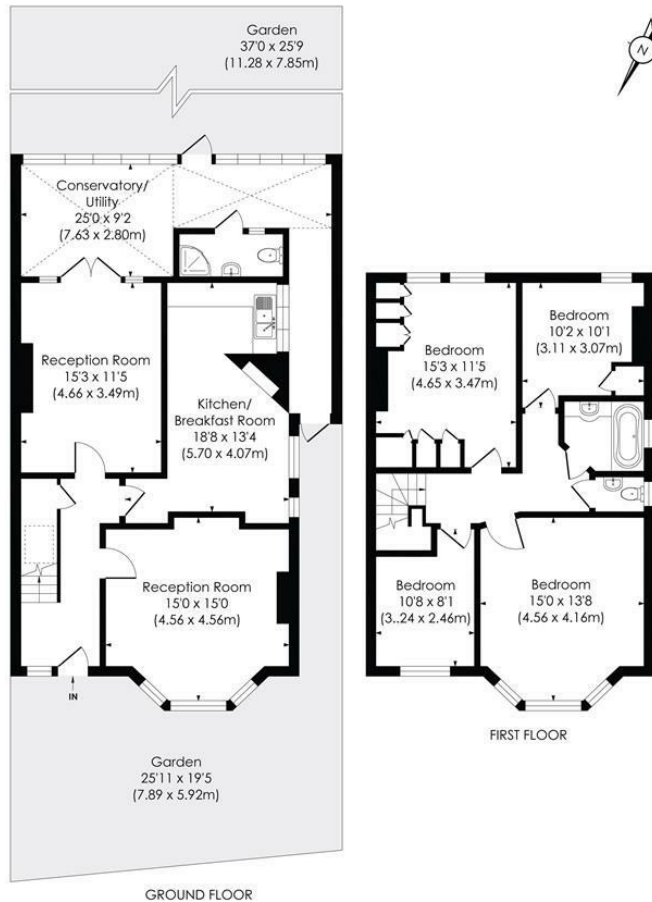


**\*\*Requiring Cosmetic Updating\*\* This spacious 1,661 sqft FOUR BEDROOM, TWO BATHROOM Victorian Semi-Detached House has off street parking to the front and a South facing rear garden. Ideally located for both Raynes Park and Wimbledon Station, Shops and well regarded schools. This is an ideal blank canvas for an incoming buyer to finish and extend S.T.P.P. Offered to the market with no onward chain.**

## WORPLE ROAD, SW20

Approx. Gross Internal Floor Area

1661 Sq. ft/154.27 Sq. m



© Pixangle Property Marketing Ltd. info@pixangle.com Tel: 0208 870 2118

pixangle  
PROPERTY MARKETING

This floor plan has been prepared for the purpose of illustration only in accordance with the latest RICS code of measuring practice and is not to scale. All measurements and areas are approximate and whilst every effort has been made to ensure the accuracy of the plan contained here, no responsibility is taken for any error, omission or misstatement.

- 1,661 sqft - Four Bedroom - Two Bathroom
- Attractive Victorian Semi-Detached House
- Off Street Parking To The Front
- Low Maintenance South Facing Garden
- Ideal Blank Canvas For An Incoming Buyer To Finish And Extend S.T.P.P
- Close To Raynes Park Station And High Street
- Close To Wimbledon Station And High Street
- Close To A Selection Of Well Regarded Schools
- EPC - E
- Council Tax Band - F



Energy Efficiency Rating		
	Current	Potential
Very energy efficient - lower running costs		
A (92-100)		
B (81-91)		
C (69-80)		
D (55-68)		
E (39-54)		
F (21-38)		
G (1-20)		
Not energy efficient - higher running costs		
England & Wales	45	87
EU Directive 2002/91/EC		

For Free Mortgage Quote and Best Mortgage Rates, call Ellisons Mortgage Advisor on 0208 944 9595



Although these particulars are believed to be correct, their accuracy is not guaranteed and they do not form part of any contract.

Celebrating 30 years  
of successful Sales and  
Lettings in Merton

