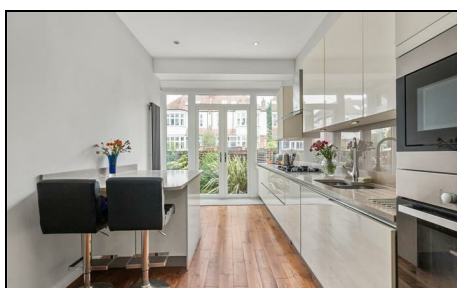


Melbury Gardens West Wimbledon, SW20 0DL

£1,000,000 Freehold



This beautifully presented 1,536 sqft, **FOUR DOUBLE BEDROOM, TWO BATHROOM "Quarter House"** is located in a desirable tree lined Road of West Wimbledon, moments from Cottenham Park. Offering easy access to Raynes Park High Street and Station, a selection of well regarded local schools and the open space of Cannon Hill Common. There is a gorgeous 18ft reception room, a modern kitchen with breakfast area, ample storage, fitted appliances and door to the garden. On the first floor there are two good proportioned double bedrooms with built in wardrobes and a modern family shower room. On the top floor there are two further double bedrooms also with built in wardrobes and a separate bathroom. Offered to the market with no onward chain.

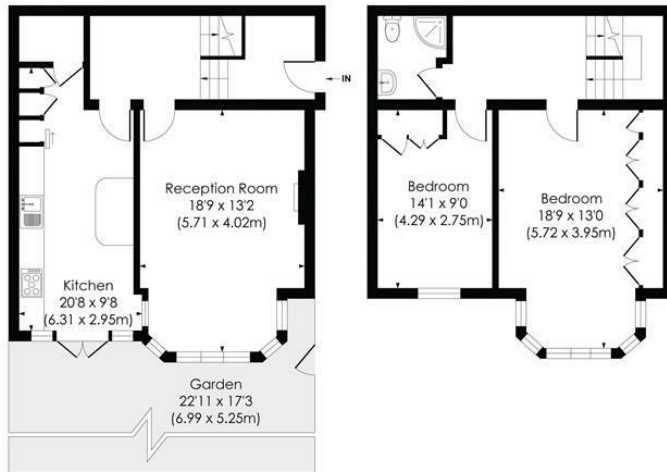
MELBURY GARDENS, SW20

Approx. Gross Internal Floor Area

1536 Sq. ft/142.69 Sq. m



SECOND FLOOR



GROUND FLOOR

FIRST FLOOR

© Pixangle Property Marketing Ltd. info@pixangle.com Tel: 0208 870 2118

pixangle
PROPERTY MARKETING

This floor plan has been prepared for the purpose of illustration only in accordance with the latest RICS code of measuring practice and is not to scale. All measurements and areas are approximate and whilst every effort has been made to ensure the accuracy of the plan contained here, no responsibility is taken for any error, omission or misstatement.

- Four Double Bedroom - Two Bathroom
- 1,536 sqft "Quarter House"
- Desirable Road of West Wimbledon
- Close to Cottenham Park
- Easy Access to Raynes Park High Street and Station
- Close to a Selection of Well Regarded Schools
- Beautifully Presented Throughout
- No Onward Chain
- EPC - D
- Council Tax Band - E



Energy Efficiency Rating		
	Current	Potential
Very energy efficient - lower running costs		
A (85-91)		
B (81-84)		
C (69-80)		
D (55-68)		
E (39-54)		
F (21-38)		
G (1-20)		
Not energy efficient - higher running costs		
England & Wales		
	62	87
	EU Directive 2002/91/EC	

For Free Mortgage Quote and Best Mortgage Rates, call Ellisons Mortgage Advisor on 0208 944 9595



Although these particulars are believed to be correct, their accuracy is not guaranteed and they do not form part of any contract.

Celebrating 30 years
of successful Sales and
Lettings in Merton

