

**Langham Road
West Wimbledon, SW20 8TP**

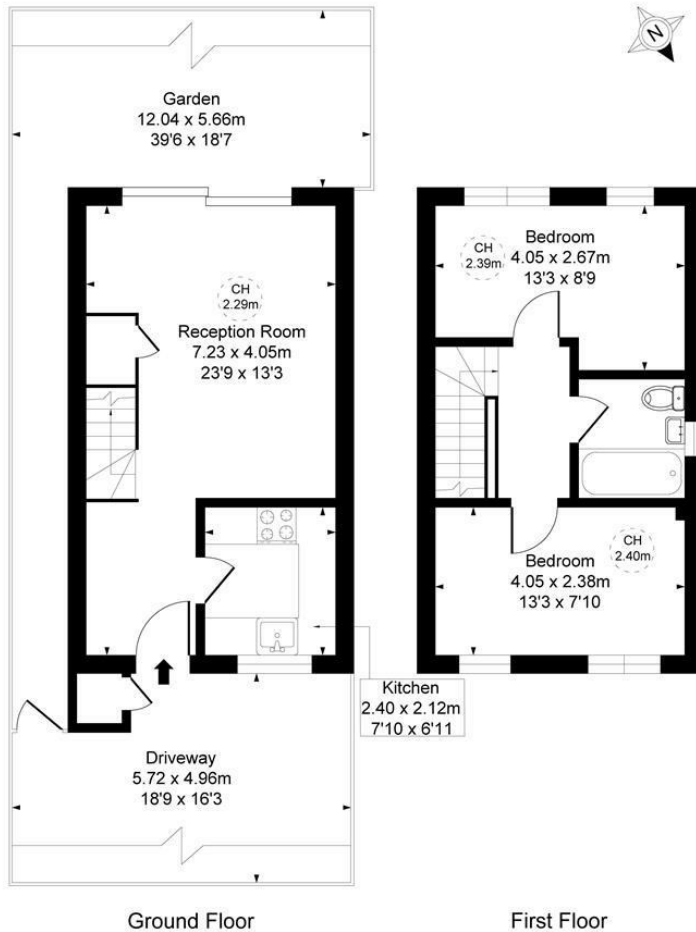
£700,000 Freehold



This is a superb TWO DOUBLE BEDROOM, modern Semi-Detached House that is perfectly located for Raynes Park High Street and Station (0.3 Miles). There is off street parking to the front, side access and a lovely 39ft West facing garden. Internally the property has been well maintained, there is a separate modern kitchen with a recently fitted boiler, a spacious reception/dining room with sliding doors and garden sun awning, two double bedrooms on the first floor, a modern bathroom and loft access for storage.

Langham Road London, SW20

Approximate Gross Internal Area
60.47 sq m / 651 sq ft
(CH = Ceiling Heights)



This plan is not to scale. It is for guidance and not for valuation purposes.
All measurements and areas are approximate only, and have been prepared in accordance with the current edition of the RICS Code of Measuring Practice.

- Two Double Bedroom
- Modern Semi-Detached House
- Off Street Parking
- Side Access and 39ft West Facing Garden
- Modern kitchen with Recently Fitted Boiler
- Spacious Reception/Dining Room with Sliding Doors and Sun Awning
- 0.3 Miles to Raynes Park Station and High Street
- Ideal First House Purchase Or Downsize Move
- EPC - D
- Council Tax Band - E



Energy Efficiency Rating		
	Current	Potential
Very energy efficient - lower running costs		
A (92-100)		
B (81-91)		
C (69-80)		
D (55-68)		
E (39-54)		
F (21-38)		
G (1-20)		
Not energy efficient - higher running costs		
England & Wales		

For Free Mortgage Quote and Best Mortgage Rates, call Ellisons Mortgage Advisor on 0208 944 9595



Although these particulars are believed to be correct, their accuracy is not guaranteed and they do not form part of any contract.

Celebrating 30 years
of successful Sales and
Lettings in Merton

