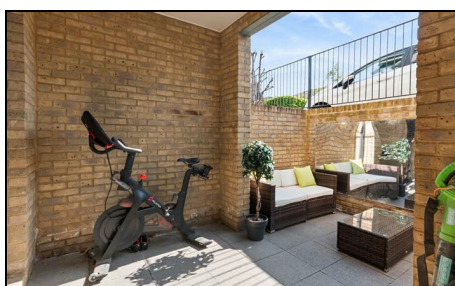


**Worple Road
West Wimbledon, SW20 8QA**

£499,950 Leasehold

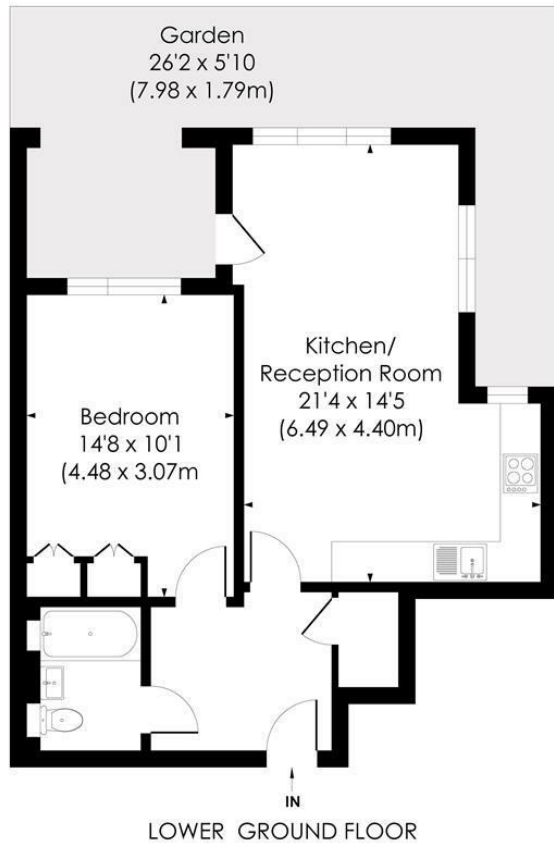


This stunning 547 sqft ONE DOUBLE BEDROOM, Ground Floor Modern apartment (built 2017) has direct access on to a gorgeous South facing private terrace. Perfectly positioned at the back of this well maintained development with easy access to both Raynes Park and Wimbledon Stations. There is a lovely 21ft open plan kitchen/dining/reception room, spacious double bedroom with built-in wardrobes, large entrance hall and a beautiful bathroom. An ideal first/second time purchase or downsize move.

WORPLE ROAD, SW20

Approx. Gross Internal Floor Area

547 Sq. ft/50.81 Sq. m

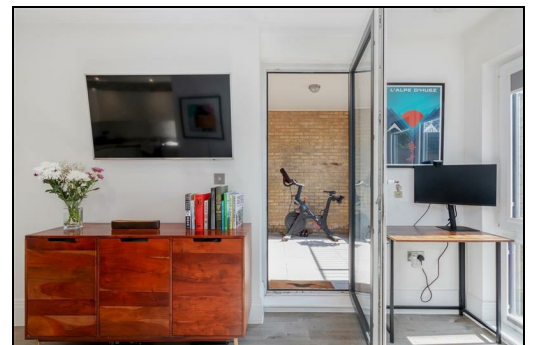


© Pixangle Property Marketing Ltd. info@pixangle.com Tel: 0208 870 2118

pixangle
PROPERTY MARKETING

This floor plan has been prepared for the purpose of illustration only in accordance with the latest RICS code of measuring practice and is not to scale. All measurements and areas are approximate and whilst every effort has been made to ensure the accuracy of the plan contained here, no responsibility is taken for any error, omission or misstatement.

- 547 sqft ONE DOUBLE BEDROOM
- Modern Apartment Built 2017
- Superb South Facing Private Terrace
- Easy Access to Wimbledon Station and High Street
- Easy Access to Raynes Park Station and High Street
- Spacious Kitchen/Dining/Reception Room
- Large Double Bedroom with Built in Wardrobes
- Modern Bathroom
- EPC - B
- Council Tax Band - D



Energy Efficiency Rating		
Very energy efficient - lower running costs	Current	Potential
A (91-100)	86	86
B (81-90)		
C (69-80)		
D (55-68)		
E (39-54)		
F (21-38)		
G (1-20)		
Not energy efficient - higher running costs		
England & Wales		
EU Directive 2002/91/EC		

For Free Mortgage Quote and Best Mortgage Rates, call Ellisons Mortgage Advisor on 0208 944 9595



Although these particulars are believed to be correct, their accuracy is not guaranteed and they do not form part of any contract.

**Celebrating 30 years
of successful Sales and
Lettings in Merton**

