

Phyllis Avenue Motspur Park, KT3 6JZ

£750,000 Freehold

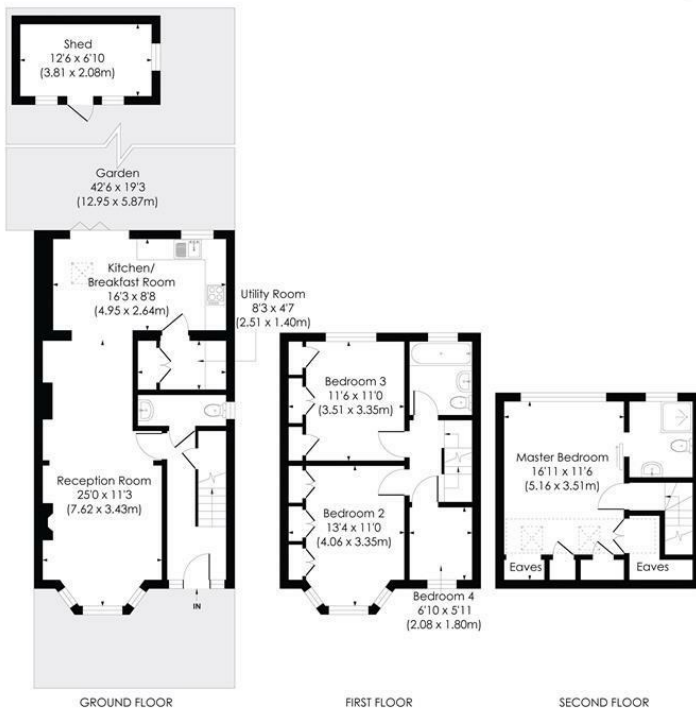


This fully extended 1,217sqft FOUR BEDROOM, TWO BATHROOM 1930s End Of Terrace House is perfectly located for Motspur Park Station and High Street. Well presented throughout with a spacious through lounge, modern kitchen, utility room, downstairs W.C, modern family bathroom and a 42ft rear Garden. Offered to the market with no onward chain.

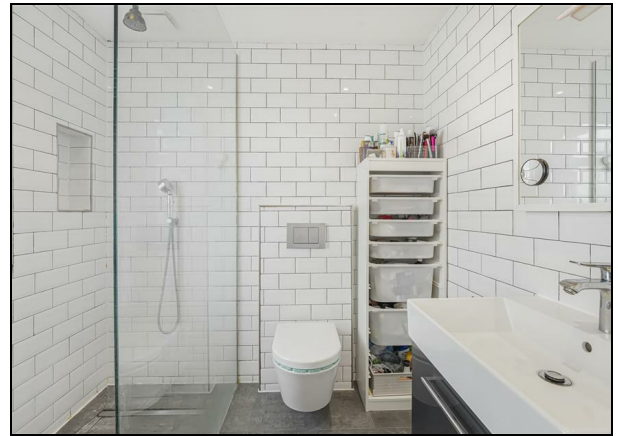
PHYLLIS AVENUE, KT3

Approx. Gross Internal Floor Area

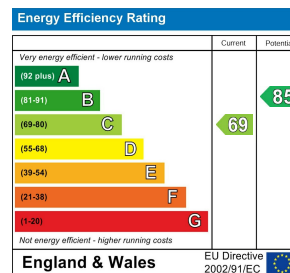
1217 Sq. ft/113.05 Sq. m



This floor plan has been prepared for the purpose of illustration only in accordance with the latest RICS code of measuring practice and is not to scale. All measurements and areas are approximate and whilst every effort has been made to ensure the accuracy of the plan contained here, no responsibility is taken for any error, omission or misstatement.



- Four Bedroom - Two Bathroom
- 1,217 sqft 1930s End Of Terrace House
- 42ft Rear Garden with Side Access
- Modern Kitchen with Utility Room
- Superb Principal Bedroom With En Suite
- Downstairs W.C
- Close To Motspur Park Station
- No Onward Chain
- EPC - C
- Council Tax Band - D



For Free Mortgage Quote and Best Mortgage Rates, call Ellisons Mortgage Advisor on 0208 944 9595



Although these particulars are believed to be correct, their accuracy is not guaranteed and they do not form part of any contract.

Celebrating 30 years of successful Sales and Lettings in Merton

