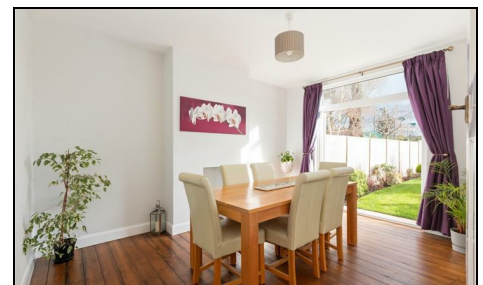
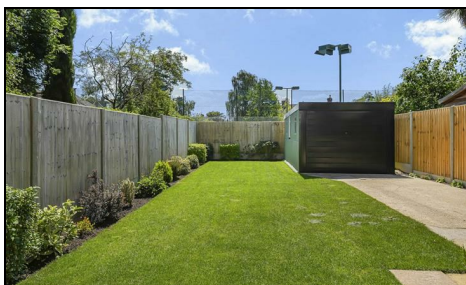


## Crossway Raynes Park, SW20 9JA

Guide Price £700,000 Freehold



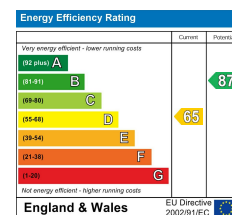
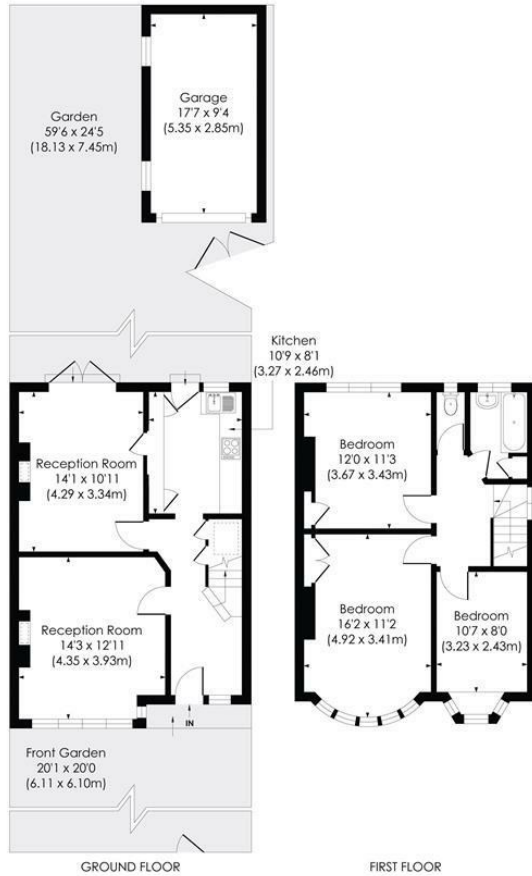
**\*\* Guide Price £700,000 to £725,000 \*\* This beautifully presented THREE DOUBLE BEDROOM, 1930's End of Terrace "Blay" House has a fantastic 59ft South Facing rear Garden with separate garage. Located within easy access to Raynes Park Station and High Street (0.7 Miles), Cannon Hill Common (0.2 Miles) and a selection of well-regarded schools. An ideal blank canvas with future potential to extend to the loft and rear s.t.p.p.**

## CROSSWAY, SW20

Approx. Gross Internal Floor Area

**1240 Sq. ft/ 115.20 Sq. m (Incl. Garage)**

**1077 Sq. ft/100.05 Sq. m (Excl. Garage)**



**pixangle**  
PROPERTY MARKETING

This floor plan has been prepared for the purpose of illustration only in accordance with the latest RICS code of measuring practice and is not to scale. All measurements and areas are approximate and whilst every effort has been made to ensure the accuracy of the plan contained here, no responsibility is taken for any error, omission or misstatement.

© Pixangle Property Marketing Ltd. info@pixangle.com Tel: 0208 870 2118

- Three Double Bedroom - Well Presented Throughout
- 1930s End Of Terrace "Blay" House
- 59ft South Facing Rear Garden
- 0.7 Miles To Raynes Park Station
- 0.2 Miles To Cannon Hill Common
- Potential To Extend S.T.P.P
- Separate Garage And Side Access
- Modern Fitted Bathroom
- EPC - D
- Council Tax Band - E

**For Free Mortgage Quote and Best Mortgage Rates, call Ellisons Mortgage Advisor on 0208 944 9595**



Although these particulars are believed to be correct, their accuracy is not guaranteed and they do not form part of any contract.

**Celebrating 30 years of successful Sales and Lettings in Merton**

