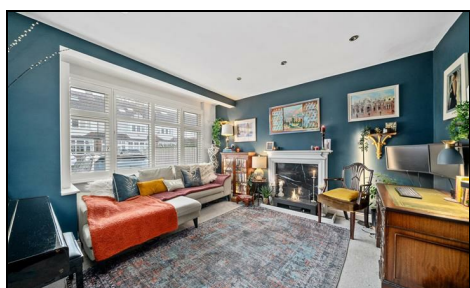


Meadow Close Raynes Park, SW20 9JB

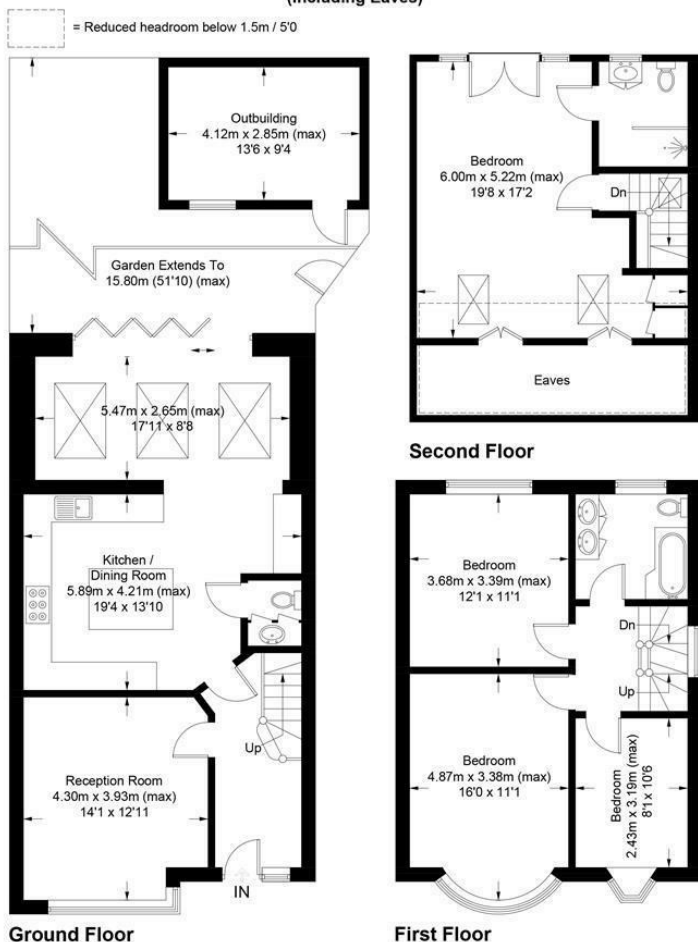
£975,000 Freehold



This gorgeous FOUR DOUBLE BEDROOM, TWO BATHROOM 1930s End Of Terrace "Blay" House has a superb open plan kitchen/dining/family room, utility room and spacious principal bedroom with en suite. Perfectly located for access to Raynes Park High Street, Station and the open space of Cannon Hill Common. There is also a driveway to the front, useful side access, a spacious separate reception room, downstairs W.C and a modern family bathroom. Offered to the market with no onward chain.

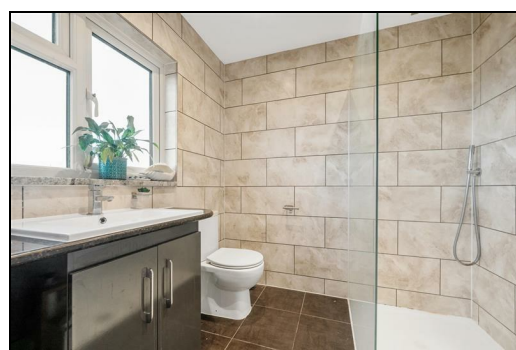
Meadow Close, SW20

Approximate Gross Internal Area = 160 sq m / 1722 sq ft
 Outbuilding = 11.7 sq m / 126 sq ft
 Total = 171.7 sq m / 1848 sq ft
 (Including Eaves)



This floor plan is for representation purposes only and is not drawn to scale.
 The Gross Internal Area includes outbuildings shown on the plan.
 Whilst every attempt has been made to ensure the accuracy of the plan measurements of doors, windows and rooms are approximate only and should be checked before making any decisions reliant upon them.
 Copyright Bespokeplans.co.uk (ID803328)

- Four Double Bedroom - Two Bathroom
- 1930s End Of Terrace "Blay" House
- Easy Access to Raynes Park Station and High Street
- Gorgeous Extended Open Plan Kitchen/Dining/Family Room
- Spacious Principal Bedroom with En Suite Shower Room
- Driveway to Front for Two Cars
- Close to Well Regarded Local Schools
- No Onward Chain
- EPC - D
- Council Tax Band - E



Energy Efficiency Rating	
Current	Potential
	82
	56
England & Wales	

For Free Mortgage Quote and Best Mortgage Rates, call Ellisons Mortgage Advisor on 0208 944 9595



Although these particulars are believed to be correct, their accuracy is not guaranteed and they do not form part of any contract.

Celebrating 30 years of successful Sales and Lettings in Merton

