

**West Barnes Lane
New Malden, KT3 6HZ**

£700,000 Freehold

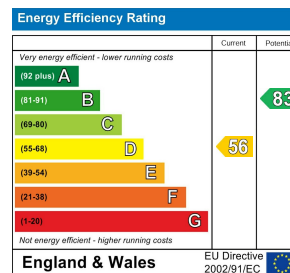
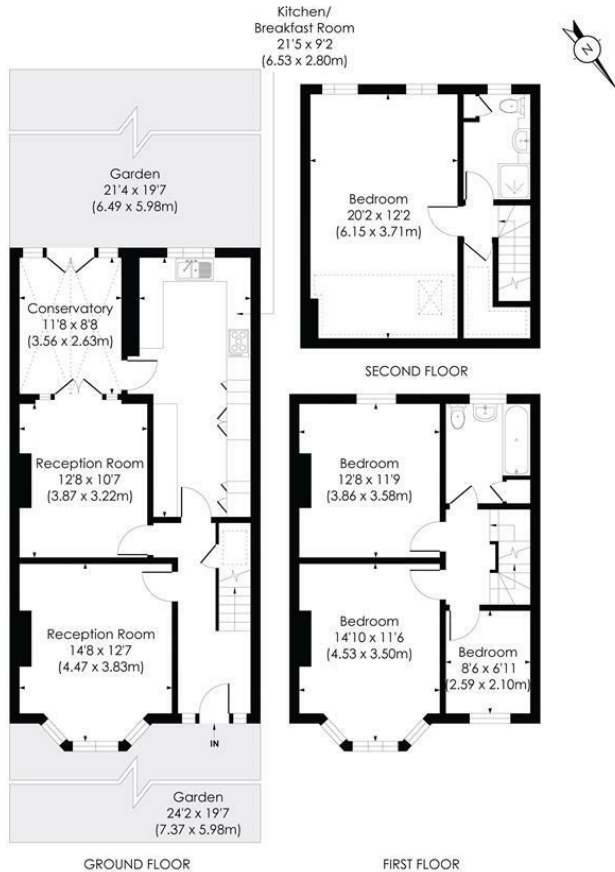


This spacious 1,593 sqft FOUR BEDROOM, TWO BATHROOM Semi Detached house is perfectly located for both Motspur Park and Raynes Park. There is a large separate front reception room, dining room, extended kitchen, conservatory, four bedrooms and two bathrooms. An excellent family home.

WEST BARNES LANE, KT3

Approx. Gross Internal Floor Area

1593 Sq. ft/147.99 Sq. m (Including reduced height)



- Four Bedroom - Two Bathroom
- Semi Detached House
- Close To Motspur Park Station
- Close to Raynes Park Station
- Extended Kitchen and Conservatory
- Low Maintenance Rear Garden
- No Onward Chain
- 1,593 sqft
- EPC - D
- Council Tax Band - E

For Free Mortgage Quote and Best Mortgage Rates, call Ellisons Mortgage Advisor on 0208 944 9595



Although these particulars are believed to be correct, their accuracy is not guaranteed and they do not form part of any contract.

Celebrating 30 years of successful Sales and Lettings in Merton

