

Blakes Terrace Motspur Park, KT3 6ET

£775,000 Freehold



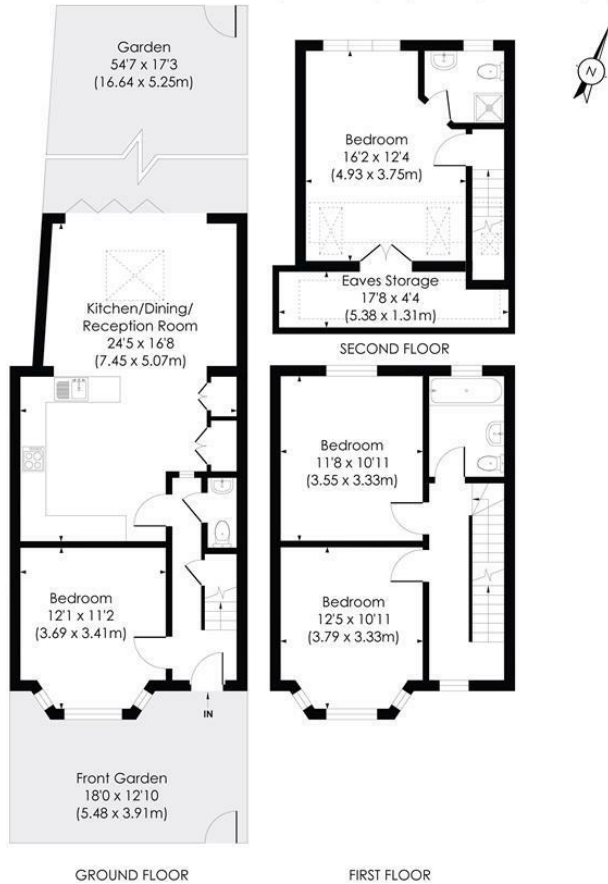
This beautifully presented 1,338 sqft THREE DOUBLE BEDROOM, TWO BATHROOM 1930s Mid Terrace House is perfectly located for Motspur Park Station. On the ground is a separate front reception room, a downstairs W.C and a gorgeous open plan kitchen/dining/family room with bi folding doors on to a large rear garden. On the first floor are two bedrooms and a modern family bathroom. The loft has been converted creating a fantastic principle bedroom suite with en-suite shower room. Offered to the market with no onward chain.

BLAKES TERRACE, KT3

Approx. Gross Internal Floor Area

1338 Sq. ft./124.32 Sq. m (Including reduced height)

1214 Sq. ft./112.76 Sq. m (Excluding reduced height)



© Pixangle Property Marketing Ltd. info@pixangle.com Tel: 0208 870 2118

pixangle
PROPERTY MARKETING

This floor plan has been prepared for the purpose of illustration only in accordance with the latest RICS code of measuring practice and is not to scale. All measurements and areas are approximate and whilst every effort has been made to ensure the accuracy of the plan contained here, no responsibility is taken for any error, omission or misstatement.

- Three Double Bedroom - Two Bathroom
- 1930s Mid Terrace House
- Beautifully Presented Through Out
- Close to Motspur Park Station
- Stunning Open Plan Kitchen/Dining/Family Room
- Extended Principle Bedroom with En-suite
- Downstairs W.C
- No Onward Chain
- EPC - C
- Council Tax Band - D



Energy Efficiency Rating		
	Current	Potential
Very energy efficient - lower running costs		
A (91-100)		
B (81-90)		
C (69-80)		
D (55-68)		
E (39-54)		
F (21-38)		
G (1-20)		
Not energy efficient - higher running costs		
England & Wales	74	86
EU Directive 2002/91/EC		

For Free Mortgage Quote and Best Mortgage Rates, call Ellisons Mortgage Advisor on 0208 944 9595



Although these particulars are believed to be correct, their accuracy is not guaranteed and they do not form part of any contract.

Celebrating 30 years
of successful Sales and
Lettings in Merton

