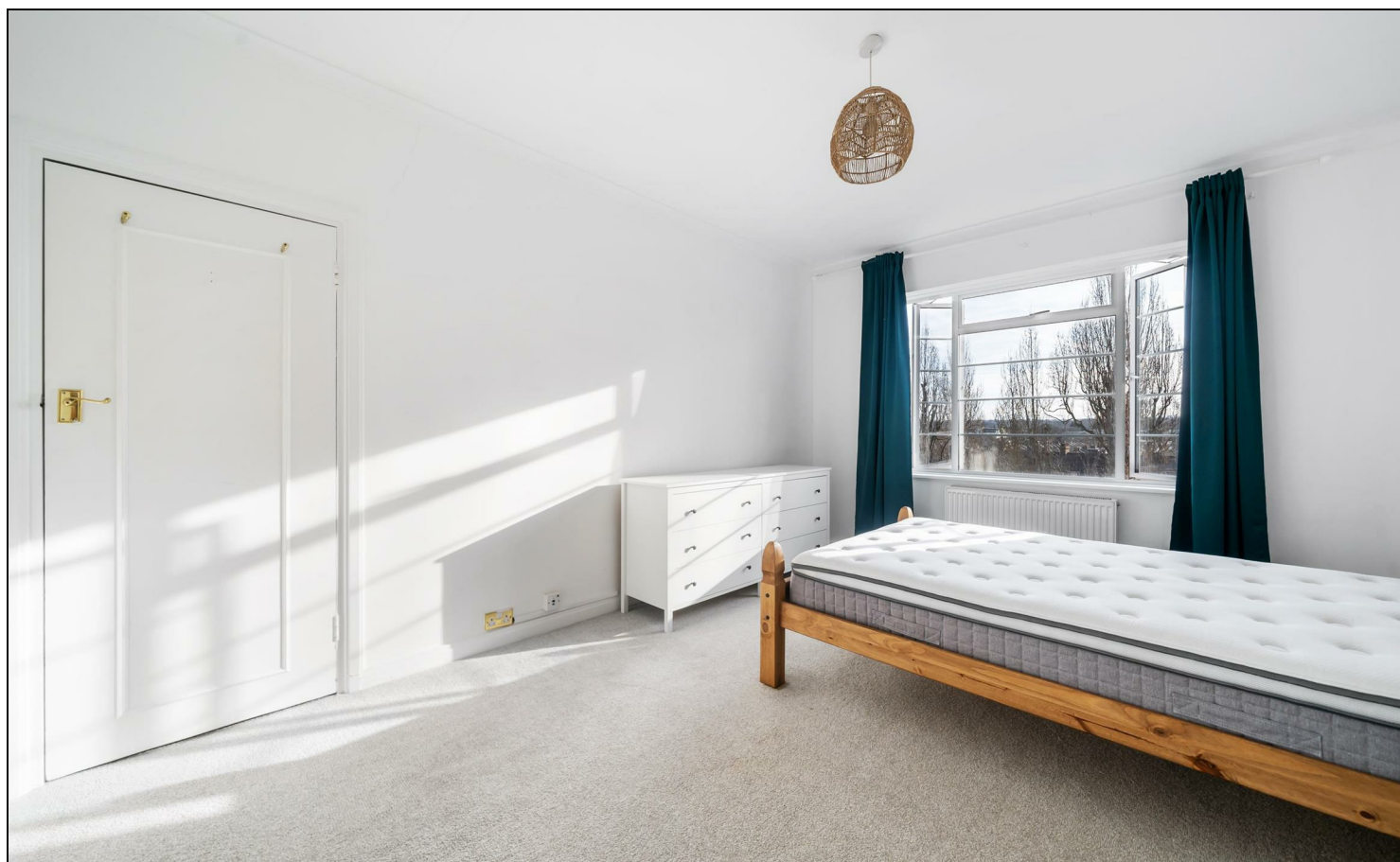


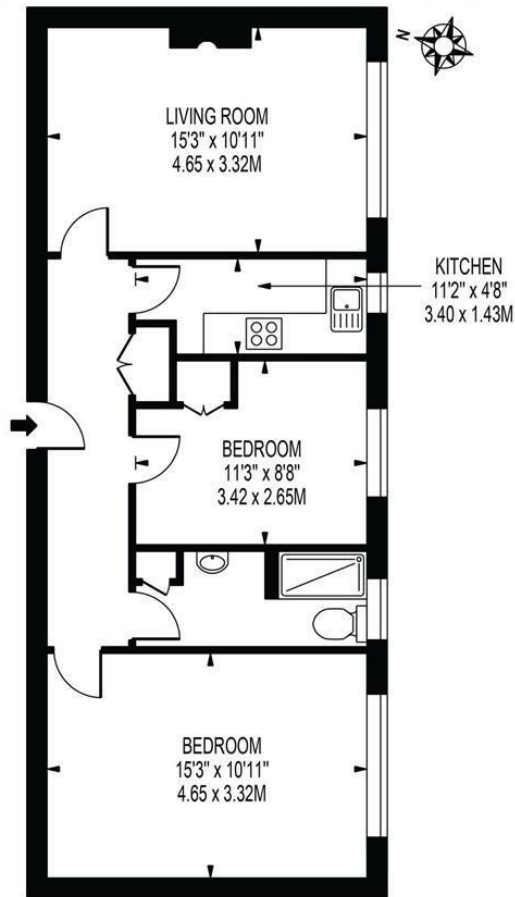
**Wyke Road  
Raynes Park, SW20 8RR**

**£400,000 Leasehold**



**This spacious (632 sqft) and centrally located TWO DOUBLE BEDROOM, top floor apartment has a lovely sized reception room, double glazing, a neutrally decorated kitchen and modern shower room. Recently modernised through out with an extended 171 Year Lease. Langham Court is a popular Art Deco Mansion block only 0.1 mile from Raynes Park High Street and Station. Offered to the market with NO ONWARD CHAIN.**

# **LANGHAM COURT** APPROXIMATE GROSS INTERNAL FLOOR AREA: 632 SQ FT - 58.75 SQ M

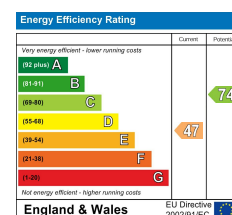


**FIFTH FLOOR**  
 FOR ILLUSTRATION PURPOSES ONLY

THIS FLOOR PLAN SHOULD BE USED AS A GENERAL OUTLINE FOR GUIDANCE ONLY AND DOES NOT CONSTITUTE IN WHOLE OR IN PART AN OFFER OR CONTRACT. ANY INTENDING PURCHASER OR LESSEE SHOULD SATISFY THEMSELVES BY INSPECTION, SEARCHES, ENQUIRIES AND FULL SURVEY AS TO THE CORRECTNESS OF EACH STATEMENT. ANY AREAS, MEASUREMENTS OR DISTANCES QUOTED ARE APPROXIMATE AND SHOULD NOT BE USED TO VALUE A PROPERTY OR BE THE BASIS OF ANY SALE OR LET.



- Two Double Bedrom
- Top Floor Apartment
- Lift & Communal Grounds
- Well Presented
- No Onward Chain
- Double Glazing
- Remaining Lease - 171 Years
- Service Charge - £1,537.16 Every 6 Months
- EPC Rating - E
- Council Tax - C



**For Free Mortgage Quote and Best Mortgage Rates, call Ellisons Mortgage Advisor on 0208 944 9595**



Although these particulars are believed to be correct, their accuracy is not guaranteed and they do not form part of any contract.

**Celebrating 30 years  
 of successful Sales and  
 Lettings in Merton**

