

Westway Raynes Park, SW20 9LT

Fixed Asking Price £725,000 Freehold

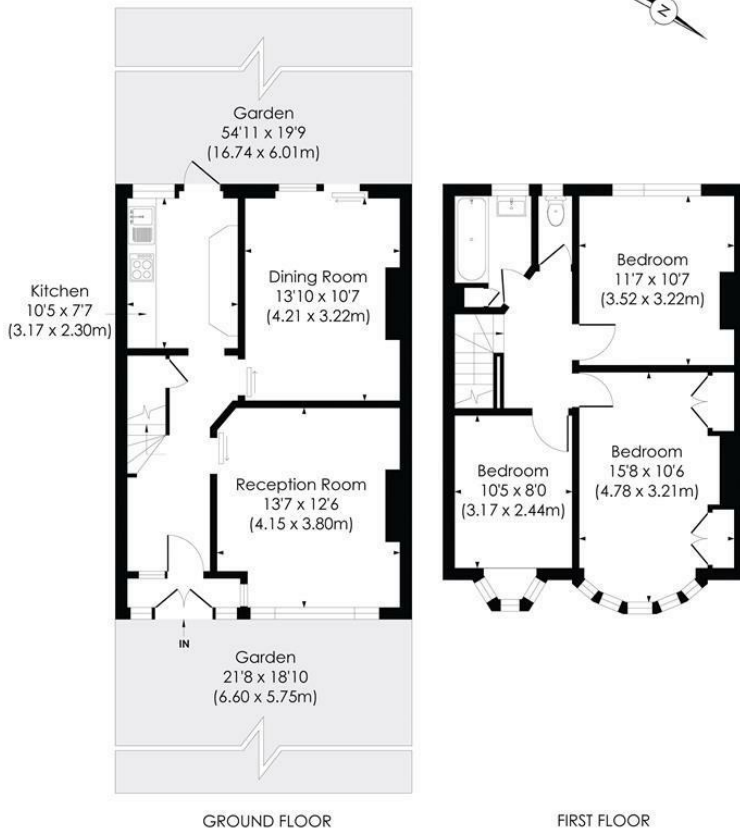


WESTWAY, SW20 9LT - This well maintained, **THREE DOUBLE BEDROOM**, un-extended 1930's Blay House has a lovely 54'ft West Facing rear garden and is located within easy access to both Raynes Park and Motspur Park Stations. An excellent blank canvas for an incoming buyer to extend and finish to their own desired tastes subject to the usual planning consents. There are two good sized separate reception rooms, a neutrally decorated kitchen, three bedrooms and a separate bathroom and w.c.

WESTWAY, SW20

Approx. Gross Internal Floor Area

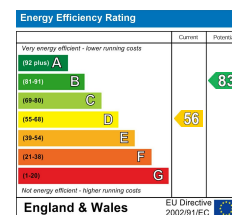
1014 Sq. ft/94.16 Sq. m



© Pixangle Property Marketing Ltd. info@pixangle.com Tel: 0208 870 2118

pixangle PROPERTY MARKETING
This floor plan has been prepared for the purpose of illustration only in accordance with the latest RICS code of measuring practice and is not to scale. All measurements and areas are approximate and whilst every effort has been made to ensure the accuracy of the plan contained here, no responsibility is taken for any error, omission or misstatement.

- WESTWAY, SW20 9LT
- Three Double Bedroom - Un Extended Blay House
- 54'ft West Facing Rear Garden
- Excellent Potential to finish and extend s.t.p.p
- Well Maintained Throughout
- Two Separate Reception Rooms
- Neutrally Decorated Kitchen and Bathroom
- Easy Access to Raynes Park
- Easy Access to Motspur Park
- Merton Council Tax Band - E - EPC - D



For Free Mortgage Quote and Best Mortgage Rates, call Ellisons Mortgage Advisor on 0208 944 9595



Although these particulars are believed to be correct, their accuracy is not guaranteed and they do not form part of any contract.

**Celebrating 30 years
of successful Sales and
Lettings in Merton**

