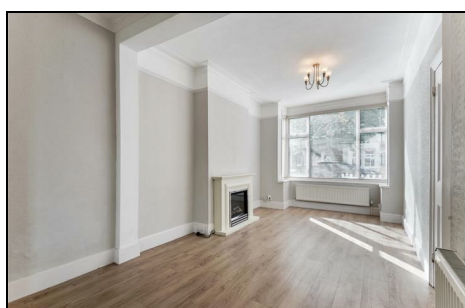


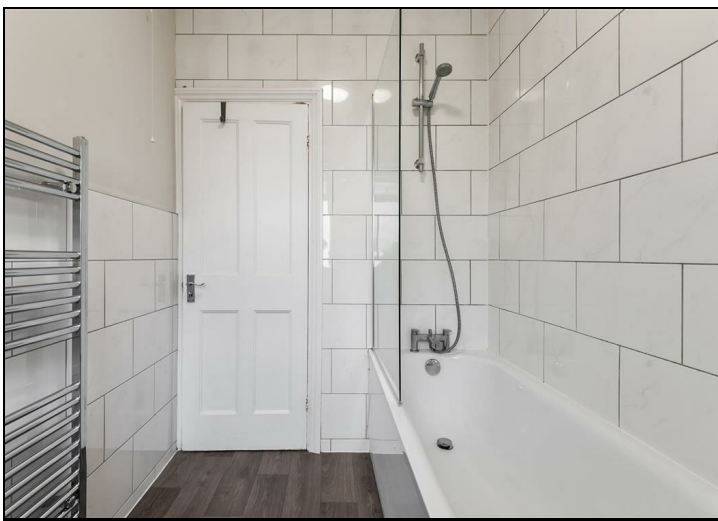
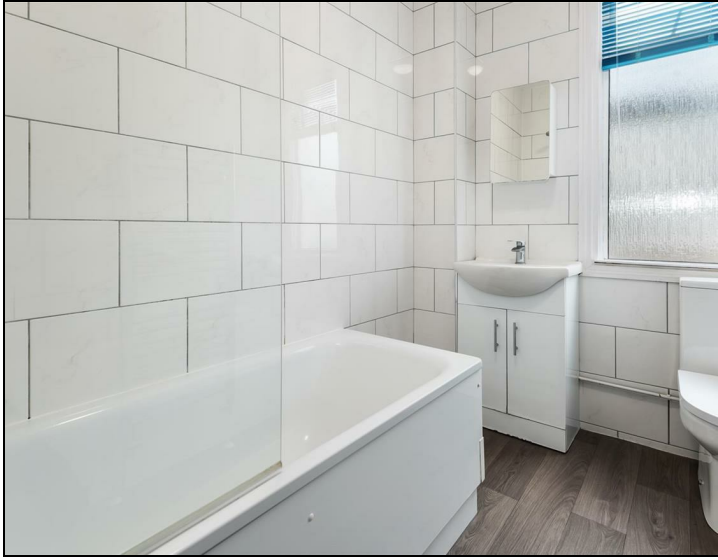
## Clifton Park Avenue Raynes Park, SW20 8BD

£700,000 Freehold



**This lovely TWO DOUBLE BEDROOM, un-extended, Edwardian, end of terrace "Apostle" house is beautifully presented throughout and has excellent potential to extend to the loft and rear s.t.p.p.**

**Located on a popular cul de sac only 0.1 Mile to Raynes Park High Street and Station. Offered to the market with no onward chain.**



Although these particulars are believed to be correct, their accuracy is not guaranteed and they do not form part of any contract.

**Celebrating 30 years  
of successful Sales and  
Lettings in Merton**

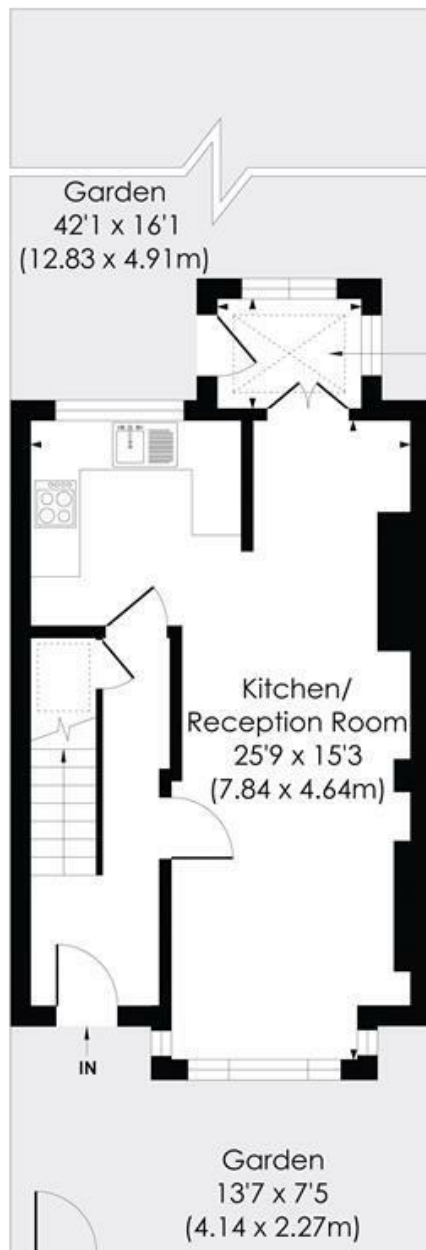




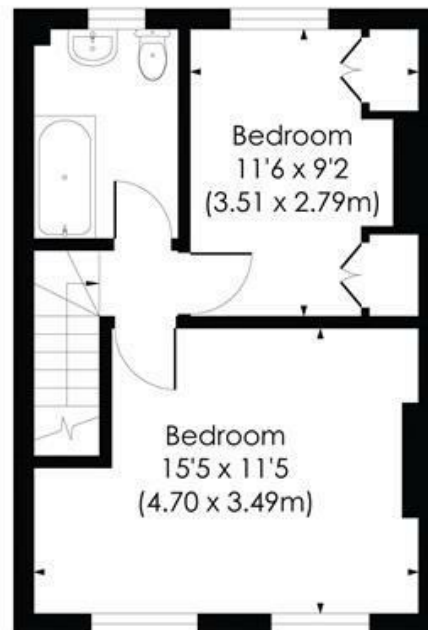
## CLIFTON PARK AVENUE, SW20

Approx. Gross Internal Floor Area

**765 Sq. ft/71.07 Sq. m**



GROUND FLOOR

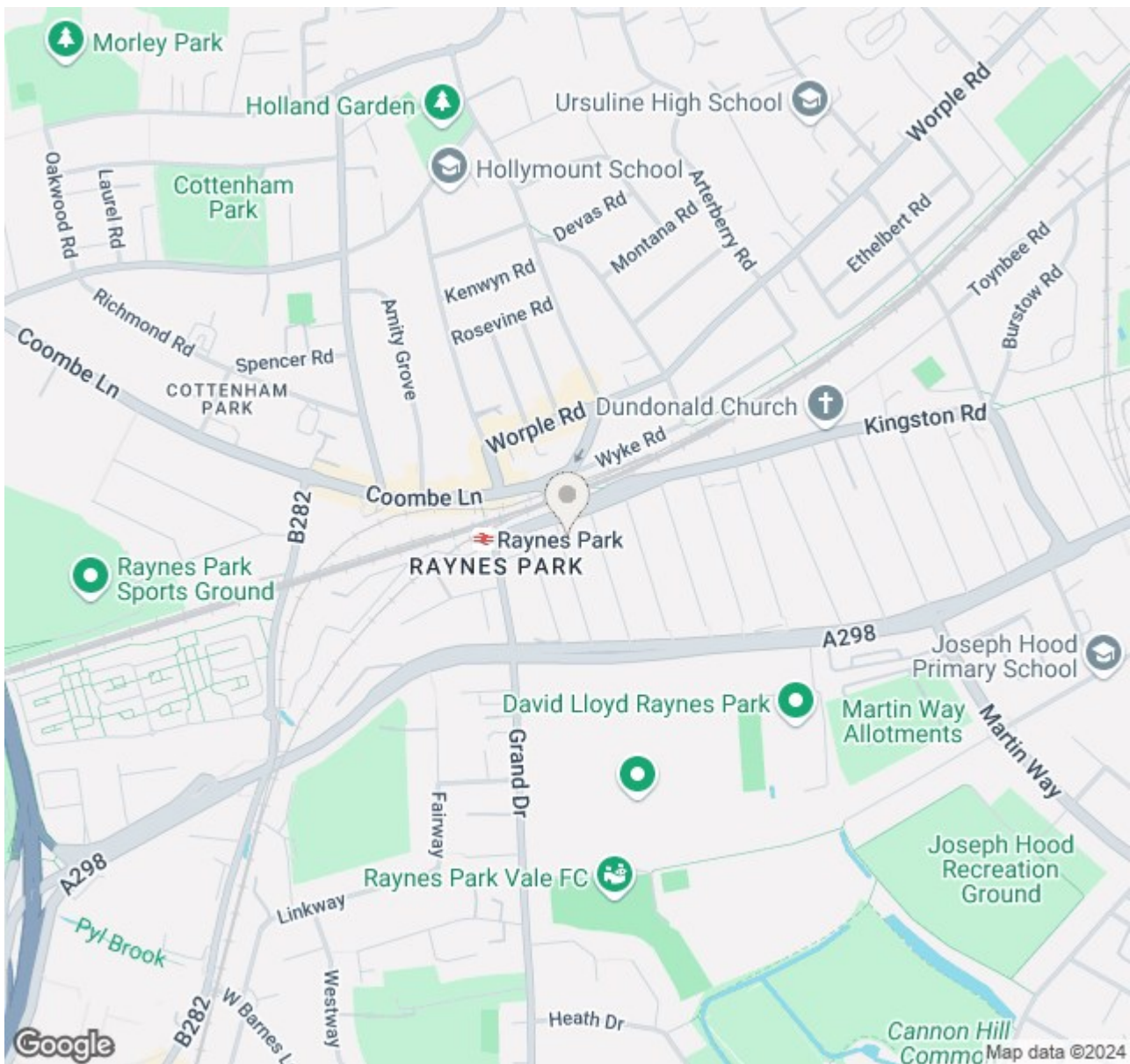


FIRST FLOOR


© Pixangle Property Marketing Ltd. info@pixangle.com Tel: 0208 870 2118

**pixangle**  
PROPERTY MARKETING

This floor plan has been prepared for the purpose of illustration only in accordance with the latest RICS code of measuring practice and is not to scale. All measurements and areas are approximate and whilst every effort has been made to ensure the accuracy of the plan contained here, no responsibility is taken for any error, omission or misstatement.



- Two Double Bedroom - End of Terrace
- Edwardian "Apostle" House
- 0.1 Mile to Raynes Park Station and High Street
- Potential To Extend To Loft And The Rear S.T.P.P
- No Onward Chain - Well Presented Throughout
- Open Plan Kitchen/Dining/Reception Room
- Modern Kitchen and Bathroom
- 42'ft Rear Garden
- Council Tax Band - D
- EPC Rating - D

Energy Efficiency Rating		
	Current	Potential
Very energy efficient - lower running costs		
(92 plus) <b>A</b>		<b>85</b>
(81-91) <b>B</b>		
(69-80) <b>C</b>		
(55-68) <b>D</b>	<b>56</b>	
(39-54) <b>E</b>		
(21-38) <b>F</b>		
(1-20) <b>G</b>		
Not energy efficient - higher running costs		
<b>England &amp; Wales</b>		EU Directive 2002/91/EC 

For Free Mortgage Quote and Best Mortgage Rates, call Ellisons Mortgage Advisor on 0208 944 9595



Although these particulars are believed to be correct, their accuracy is not guaranteed and they do not form part of any contract.

Celebrating 30 years of successful Sales and Lettings in Merton

