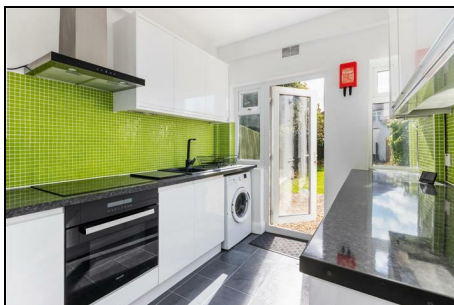


Bushey Road Raynes Park, SW20 0JN

£674,950 Freehold



****AVAILABLE WITH REGISTERED HMO LICENCE TILL 2028****

This spacious and centrally located 1,512 sqft **THREE BEDROOM**, 1930's Mid Terrace "Blay" House has a useful loft room, 62'ft South Facing garden and a modern kitchen and bathroom. Located only 0.2 Miles to Raynes Park High Street and Station. Offering excellent potential to further extend S.T.P.P. Chain Free.

We understand from the seller that Merton Council has the property listed as a fully licensed House of Multiple Occupation (HMO - expiring April 2028) for up to 5 residents.



Although these particulars are believed to be correct, their accuracy is not guaranteed and they do not form part of any contract.

**Celebrating 30 years
of successful Sales and
Lettings in Merton**

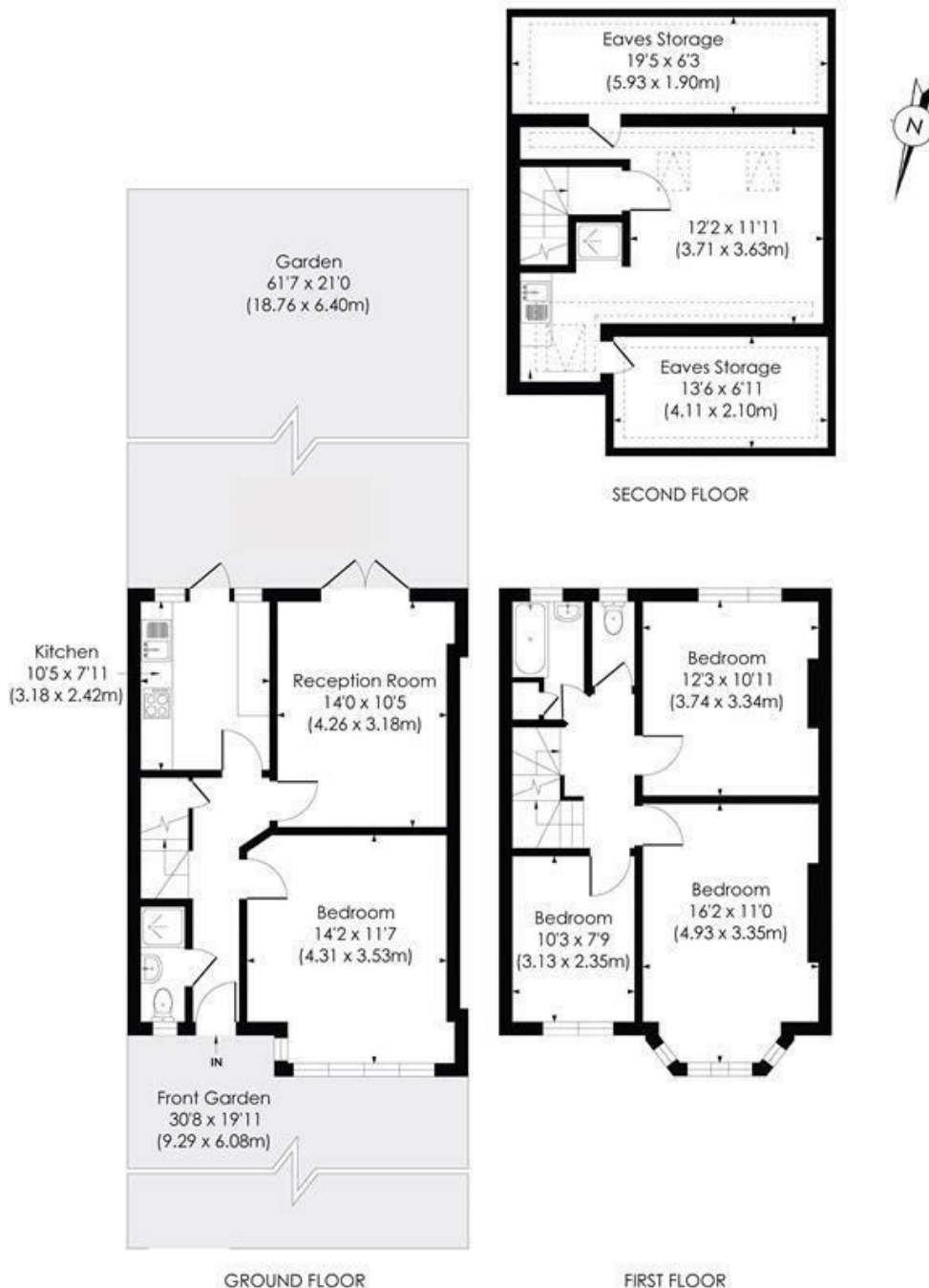


BUSHEY ROAD, SW20

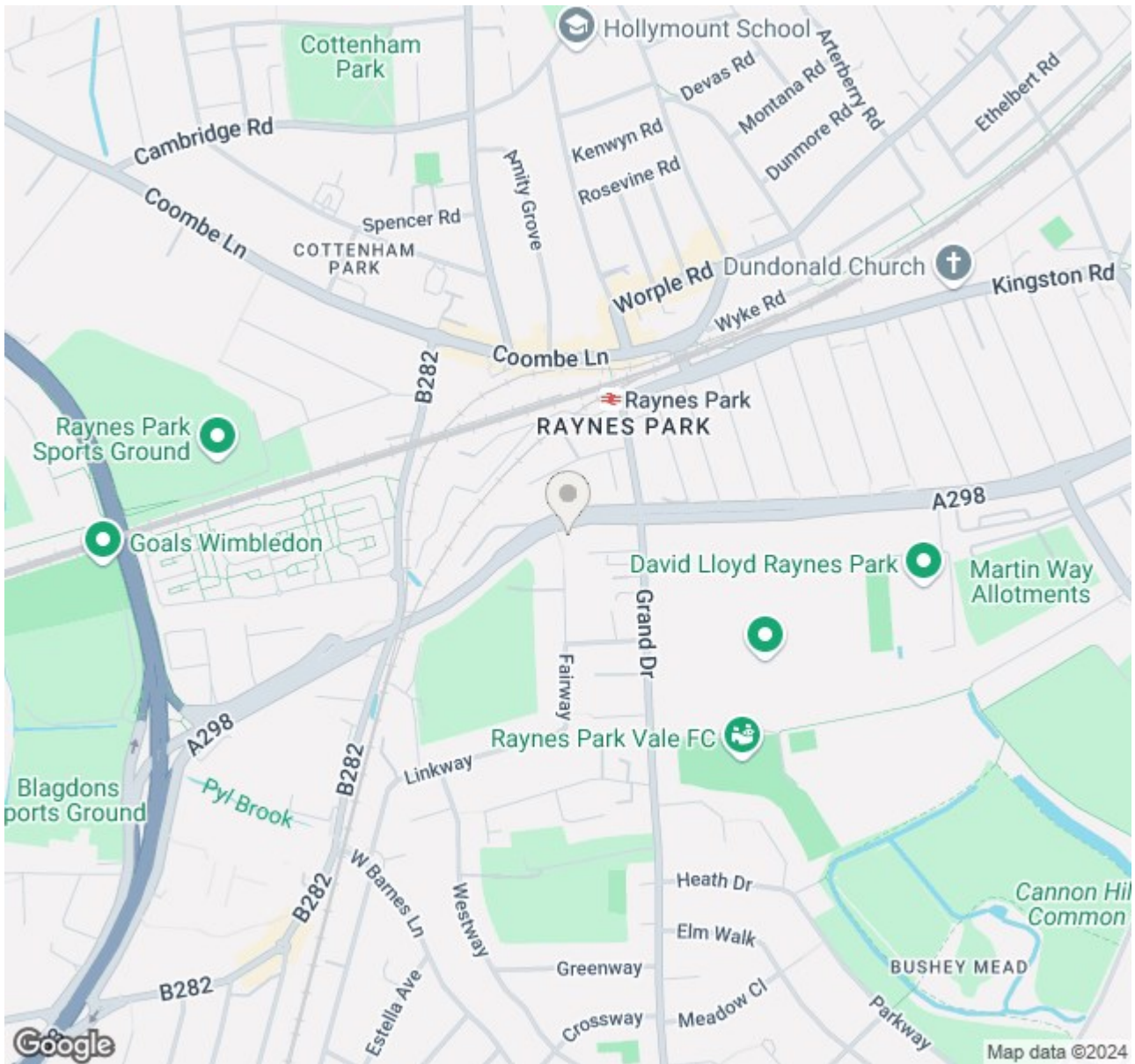
Approx. Gross Internal Floor Area

1512 Sq. ft/140.43 Sq. m (Including reduced height)

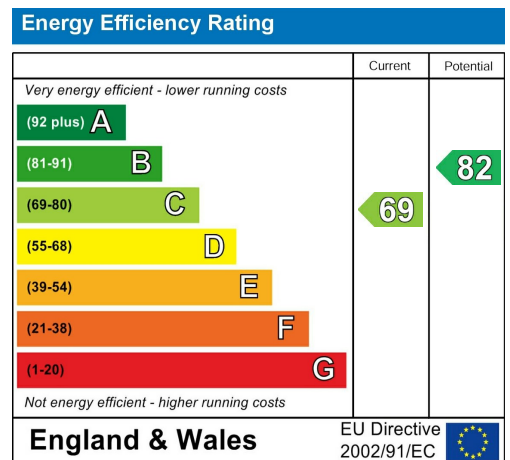
1239 Sq. ft/115.13 Sq. m (Excluding reduced height)



© Pixangle Property Marketing Ltd. info@pixangle.com Tel: 0208 870 2118



- Three Double Bedroom with Additional Left Room
- 1,512 sqft - 1930's "Blay" Mid Terrace House
- Potential To Further Extend S.T.P.P
- 0.2 Miles to Raynes Park Station and High Street
- No Onward Chain
- Former HMO still with registered licence until 2028
- 61'ft South Facing Rear Garden
- Modern Kitchen and Bathroom
- EPC Rating - C
- Council Tax Band - D



For Free Mortgage Quote and Best Mortgage Rates, call Ellisons Mortgage Advisor on 0208 944 9595



Although these particulars are believed to be correct, their accuracy is not guaranteed and they do not form part of any contract.

Celebrating 30 years of successful Sales and Lettings in Merton

