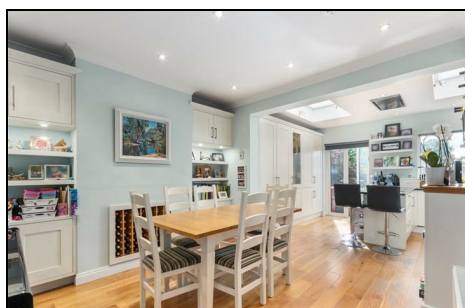
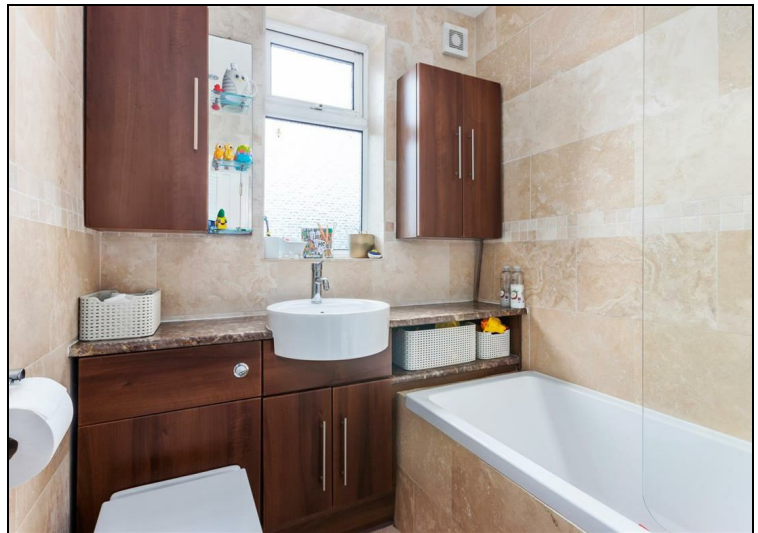
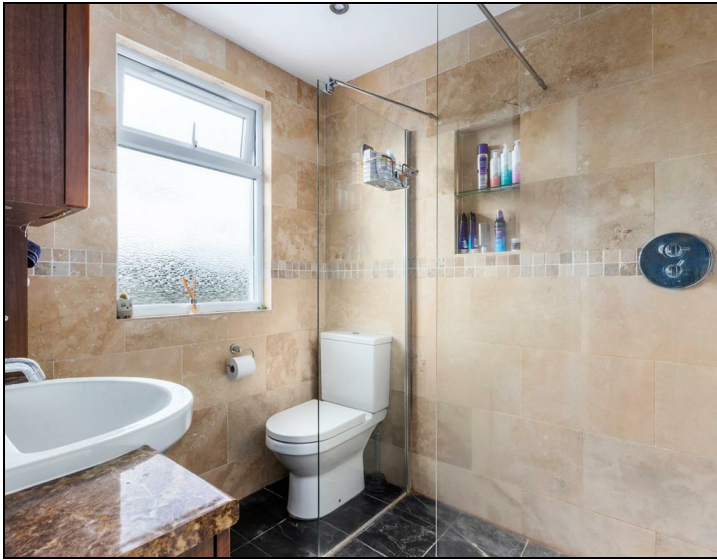


**Tennyson Avenue
Motspur Park, KT3 6NA**

£750,000 Freehold



This lovely 1,373 sqft FOUR BEDROOM, TWO BATHROOM 1930's Mid Terrace House has off street parking to the front and a lovely South West facing garden with views over playing fields. Located only 0.3 miles to Motspur Park Station and The Sir Joseph Hood Memorial Playing Fields. There is also a separate front reception room, open plan kitchen/dining room, utility room, downstairs W.C, modern family bathroom and spacious principle bedroom with en-suite bathroom.



Although these particulars are believed to be correct, their accuracy is not guaranteed and they do not form part of any contract.

Celebrating 30 years of successful Sales and Lettings in Merton



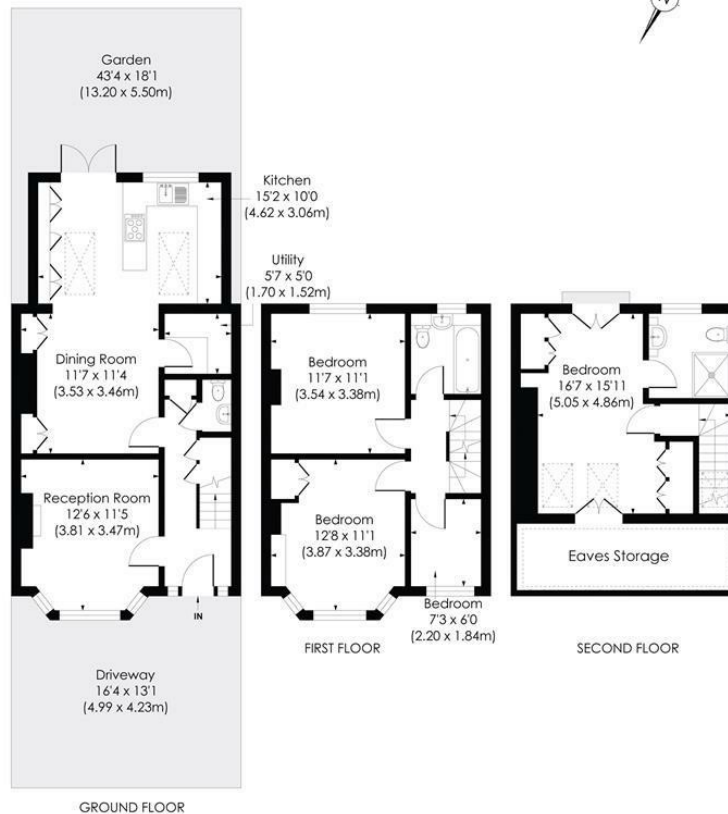


TENNYSON AVENUE, KT3

Approx. Gross Internal Floor Area

1373 Sq. ft/127.52 Sq. m (Including reduced height)

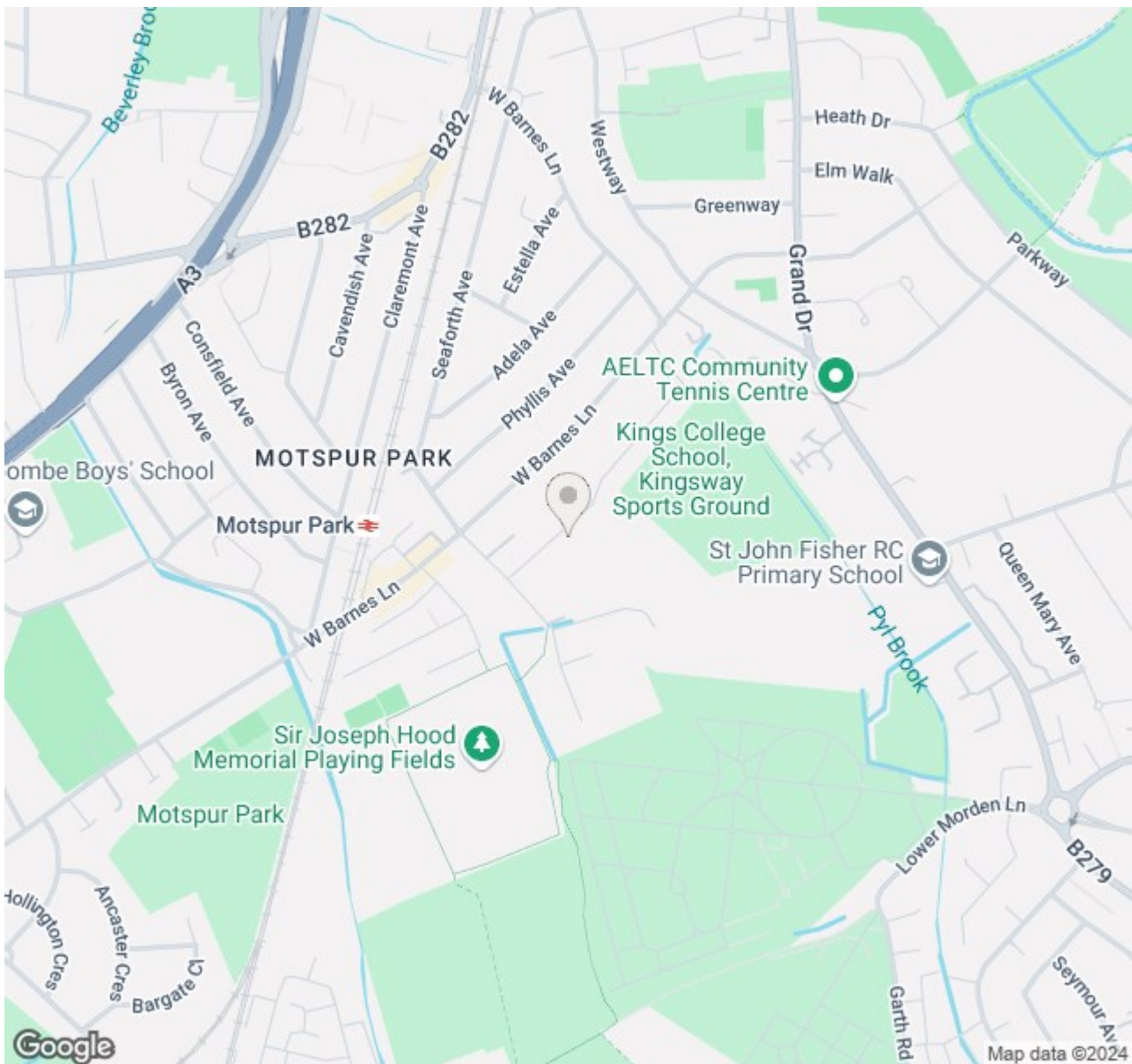
1253 Sq. ft/116.37 Sq. m (Excluding reduced height)



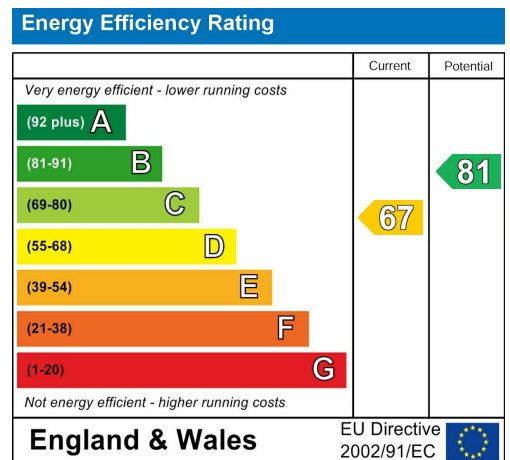
© Pixangle Property Marketing Ltd. info@pixangle.com Tel: 0208 870 2118

pixangle
PROPERTY MARKETING

This floor plan has been prepared for the purpose of illustration only in accordance with the latest RICS code of measuring practice and is not to scale. All measurements and areas are approximate and whilst every effort has been made to ensure the accuracy of the plan contained here, no responsibility is taken for any error, omission or misstatement.



- Four Bedroom - Two Bathroom - 1373 sqft
- 1930's Mid Terrace House
- South West Facing Rear Garden with view over playing fields
- 0.3 Miles to Motspur Park Station
- Off Street Parking to Front
- Extended Kitchen/Dining Room
- Utility Room and Downstairs W.C
- Spacious Principle Bedroom with En-suite
- EPC - D
- Council Tax Band - D



For Free Mortgage Quote and Best Mortgage Rates, call Ellisons Mortgage Advisor on 0208 944 9595



Although these particulars are believed to be correct, their accuracy is not guaranteed and they do not form part of any contract.

Celebrating 30 years of successful Sales and Lettings in Merton

