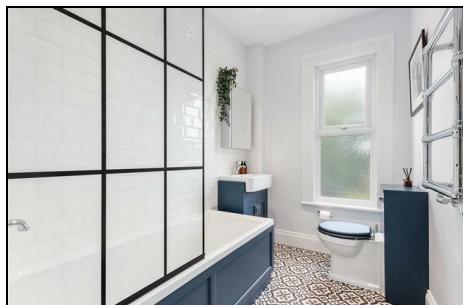


**Sydney Road
Raynes Park, SW20 8EF**

Offers In Excess Of £850,000 Freehold



This attractive 1006 sqft THREE DOUBLE BEDROOM, TWO BATHROOM "brick fronted" Victorian Apostle House has a lovely 54'ft Rear garden and is located within the Admissions Priority Area for Wimbledon Chase Primary School. Beautifully presented throughout with open plan ground floor incorporating kitchen/dining/reception room, gorgeous family bathroom, and a recently finished principle bedroom with en-suite shower room. Excellent potential to further extend to the rear S.T.P.P.



Although these particulars are believed to be correct, their accuracy is not guaranteed and they do not form part of any contract.

**Celebrating 30 years
of successful Sales and
Lettings in Merton**

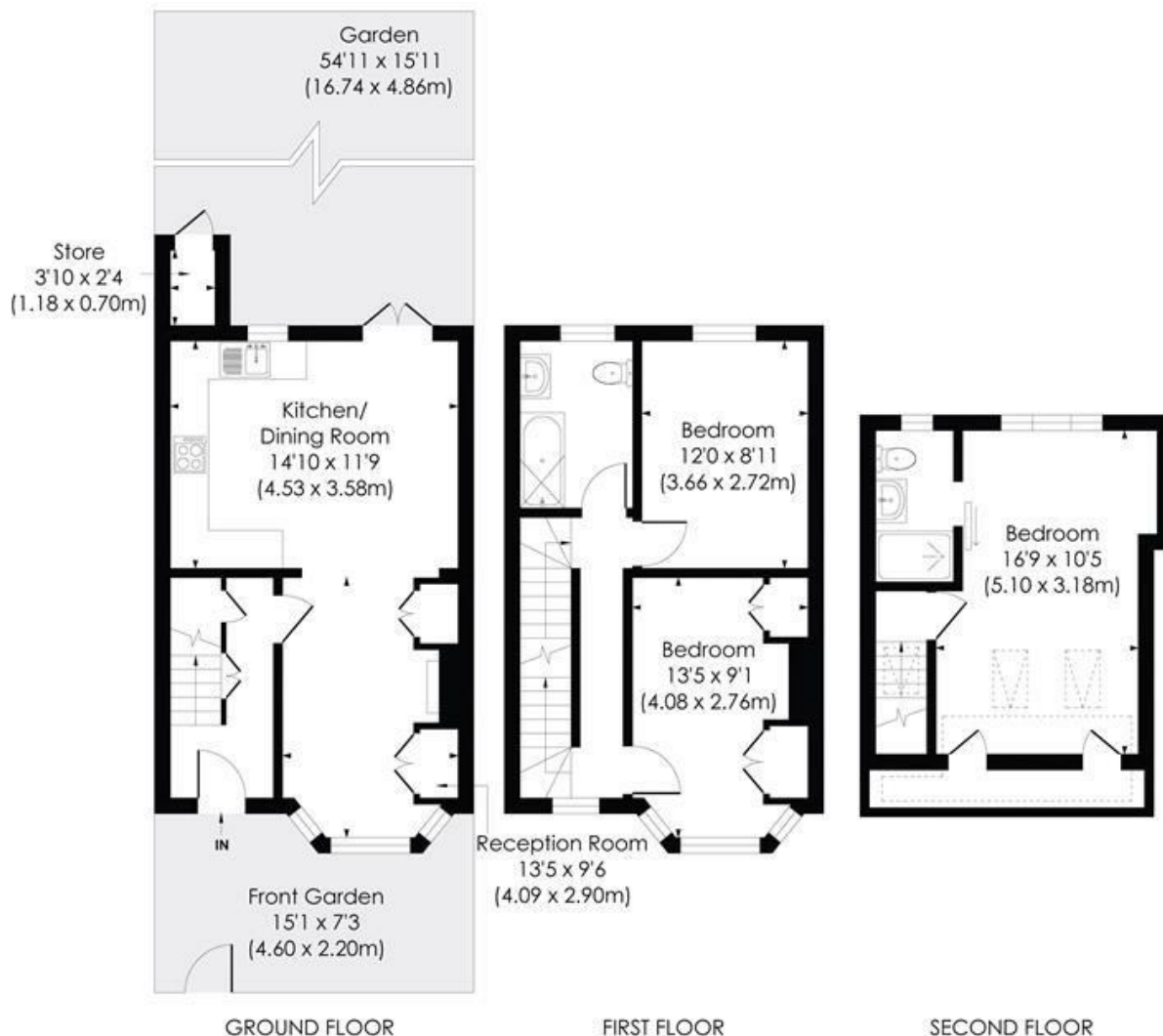


SYDNEY ROAD, SW20

Approx. Gross Internal Floor Area

1006 Sq. ft/93.48 Sq. m (Including reduced height)

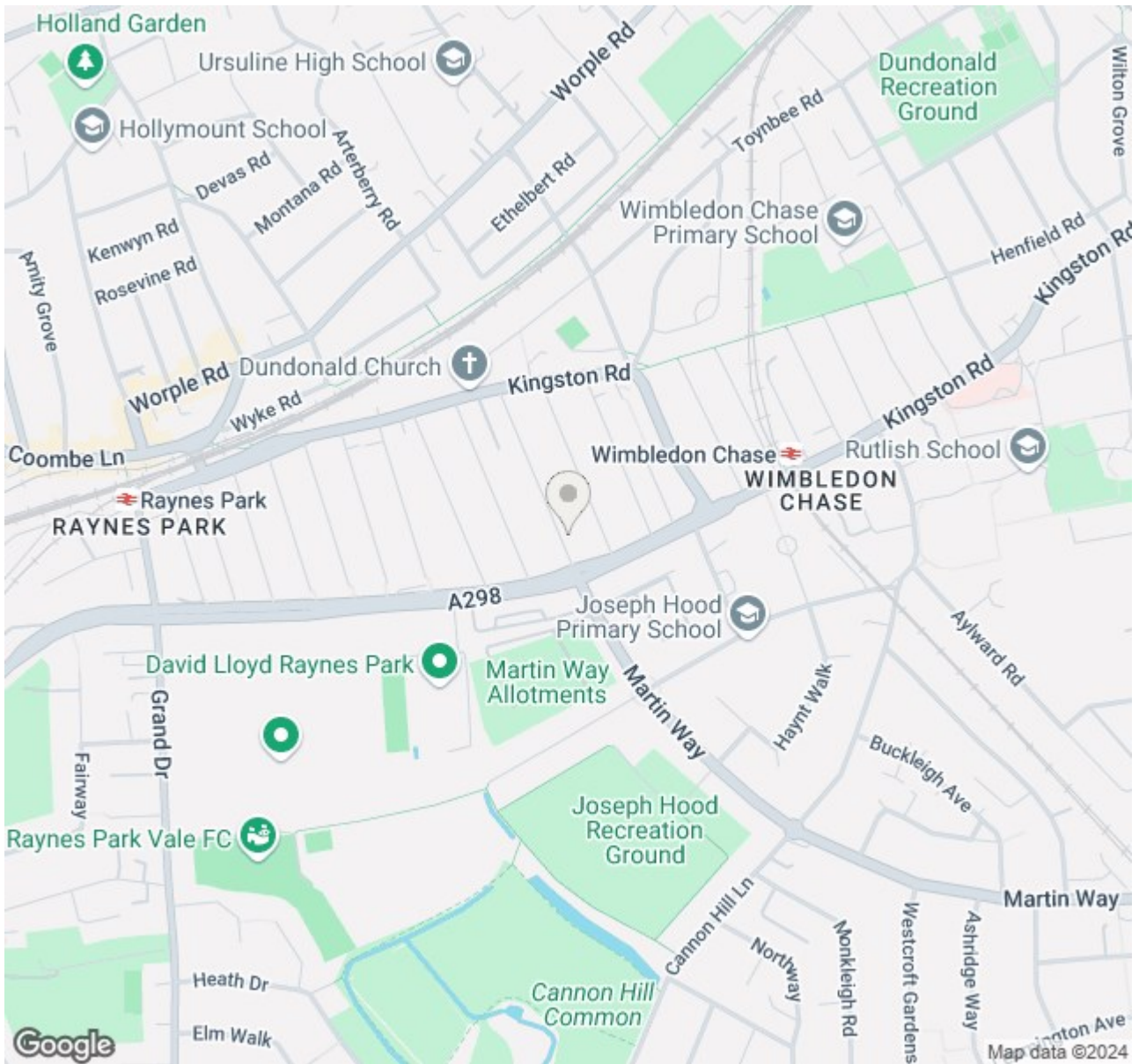
962 Sq. ft/89.38 Sq. m (Excluding reduced height)



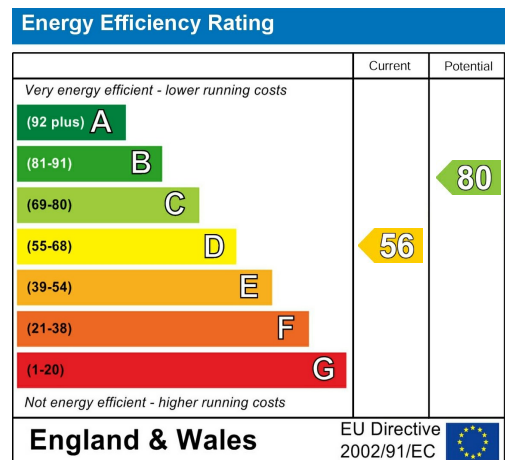
© Pixangle Property Marketing Ltd. info@pixangle.com Tel: 0208 870 2118

pixangle
PROPERTY MARKETING

This floor plan has been prepared for the purpose of illustration only in accordance with the latest RICS code of measuring practice and is not to scale. All measurements and areas are approximate and whilst every effort has been made to ensure the accuracy of the plan contained here, no responsibility is taken for any error, omission or misstatement.



- 1006 sqft - Three Double Bedroom - Two Bathroom
- Attractive Victorian Apostle House
- Wimbledon Chase Primary School A.P.A
- Beautifully Presented Throughout
- Potential To Extend to the Rear S.T.P.P
- Lovely 54'ft Rear Garden
- Close to Raynes Park and Wimbledon Chase Stations
- Stunning Principle Bedroom with En-Suite
- EPC Rating - D
- Council Tax Band - D



For Free Mortgage Quote and Best Mortgage Rates, call Ellisons Mortgage Advisor on 0208 944 9595



Although these particulars are believed to be correct, their accuracy is not guaranteed and they do not form part of any contract.

Celebrating 30 years of successful Sales and Lettings in Merton

