

**Claremont Avenue  
Motspur Park, KT3 6QW**

**£625,000 Freehold**

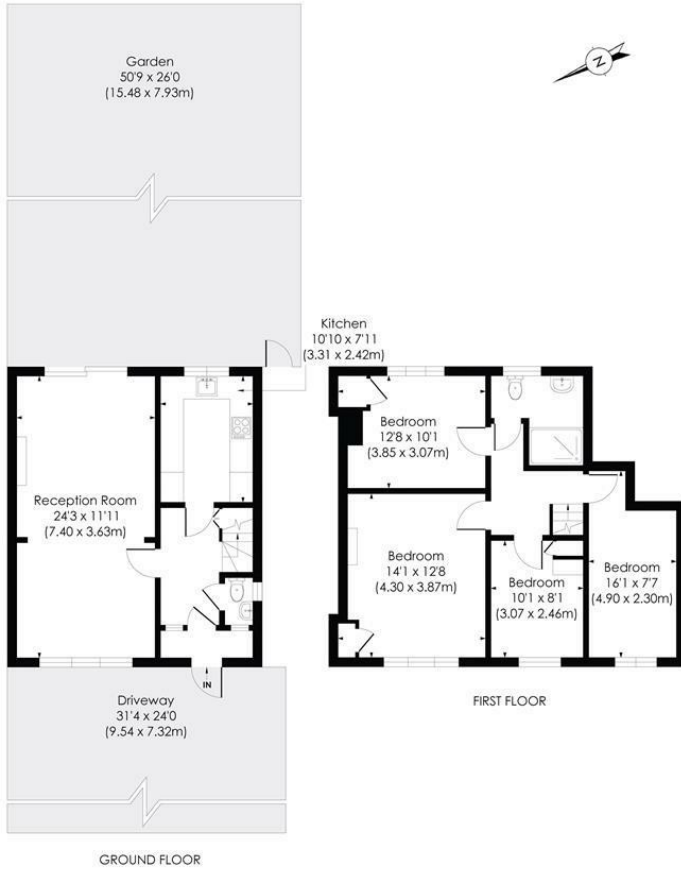


**This spacious FOUR BEDROOM mid terrace family home is ideally located for Motspur Park Station and Amenities. There is a spacious through lounge, separate kitchen, large garden, four bedrooms and a family bathroom. No Onward Chain**

## CLAREMONT AVENUE, KT3

Approx. Gross Internal Floor Area

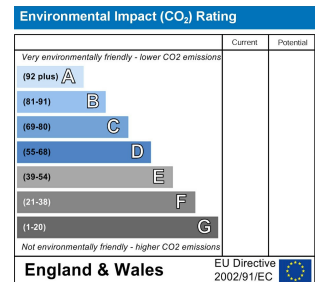
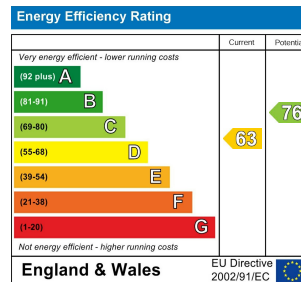
1095 Sq. ft/101.72 Sq. m



© Pixangle Property Marketing Ltd. info@pixangle.com Tel: 0208 870 2118

This floor plan has been prepared for the purpose of illustration only in accordance with the latest RICS code of measuring practice and is not to scale. All measurements and areas are approximate and whilst every effort has been made to ensure the accuracy of the plan contained here, no responsibility is taken for any error, omission or misstatement.

- Four Bedroom
- Mid Terrace
- No Onward Chain
- Close to Motspur Park Station
- Large Garden
- Potential to Extend
- Separate Kitchen
- Off Street Parking
- EPC -
- Council Tax Band -



For Free Mortgage Quote and Best Mortgage Rates, call Ellisons Mortgage Advisor on 0208 944 9595



Although these particulars are believed to be correct, their accuracy is not guaranteed and they do not form part of any contract.

Celebrating 30 years of successful Sales and Lettings in Merton

