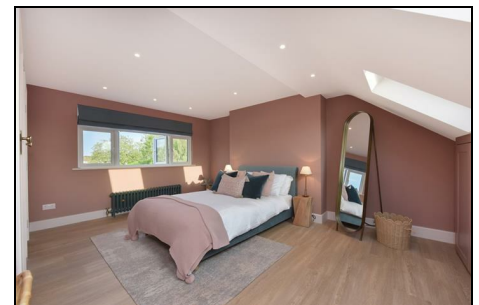


Fairway Raynes Park, SW20 9DN

£950,000 Freehold



This beautiful **FOUR DOUBLE BEDROOM, THREE BATHROOM** fully extended 1930's Mid Terrace "Blay" House has a stunning and recently finished principal bedroom suite with built in storage and a gorgeous en-suite shower room, a superb kitchen/dining/family room with utility area and a spacious separate reception room. Located only 0.4 Miles to Raynes Park Station and High Street. There is also off street parking to the front for up-to two cars, a welcoming entrance hall, a stylish downstairs shower room and a good sized garden with rear access and shed. On the first floor are an additional three double bedrooms and a modern family bathroom.



Although these particulars are believed to be correct, their accuracy is not guaranteed and they do not form part of any contract.

**Celebrating 30 years
of successful Sales and
Lettings in Merton**

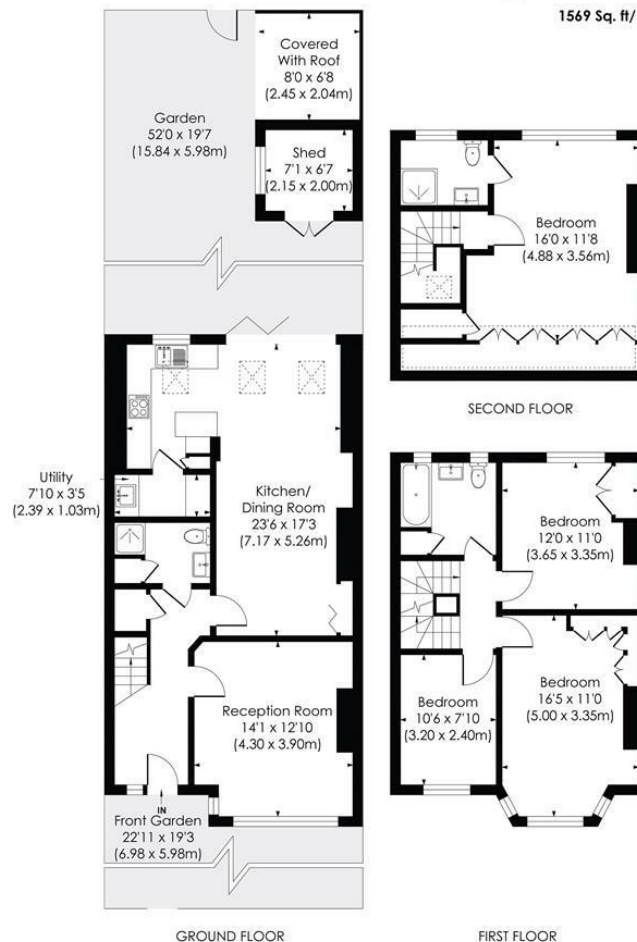


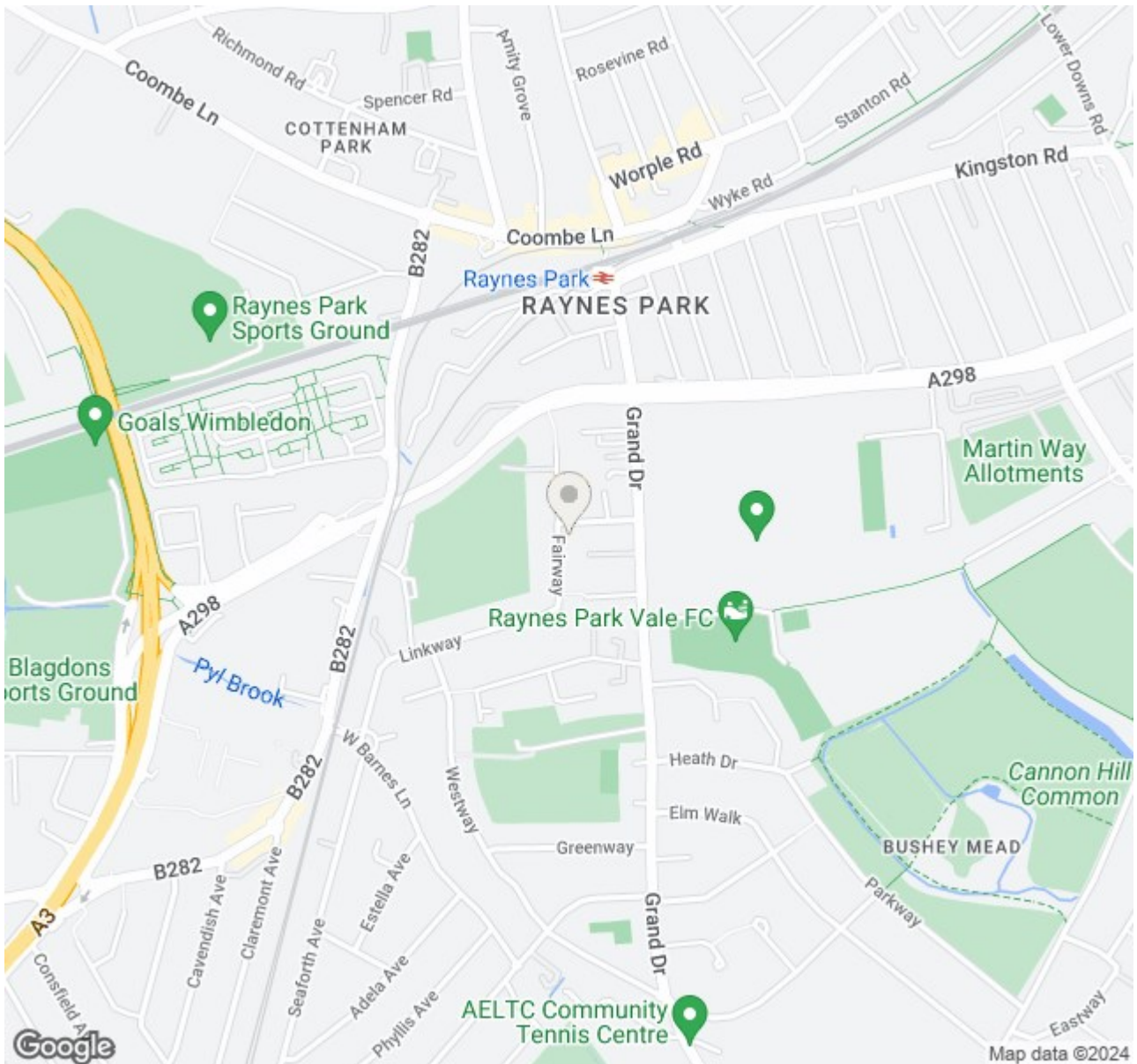


FAIRWAY, SW20

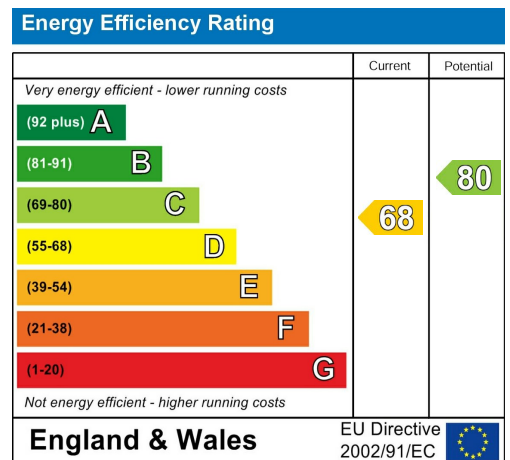
Approx. Gross Internal Floor Area

1569 Sq. ft/145.76 Sq. m





- Four Double Bedrooms
- Three Beautiful Bathroom's
- Off Street Parking To Front
- Large Garden With Rear Access
- 0.4 Miles To Raynes Park Station
- Stunning Master Bedroom with En-Suite
- Superb Open Plan Kitchen/Dining/Family Room
- Fully Extended 1930's Blay House
- EPC - TBC
- Council Tax Band - E



For Free Mortgage Quote and Best Mortgage Rates, call Ellisons Mortgage Advisor on 0208 944 9595



Although these particulars are believed to be correct, their accuracy is not guaranteed and they do not form part of any contract.

Celebrating 30 years of successful Sales and Lettings in Merton

