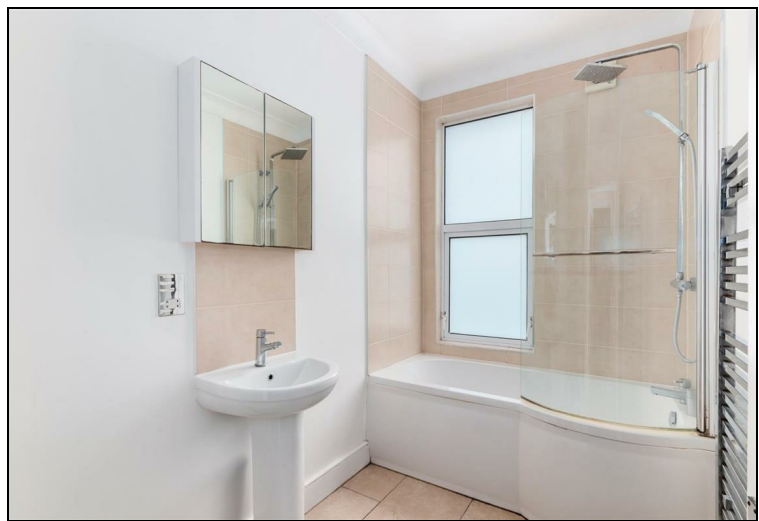
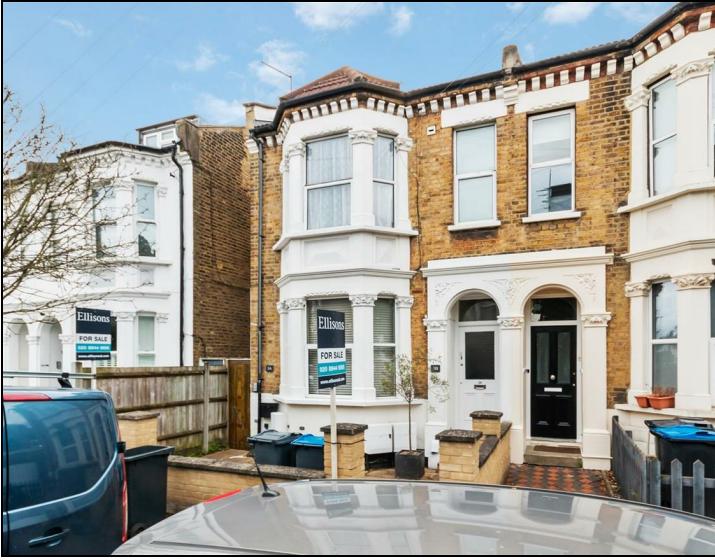


Chestnut Road Raynes Park, SW20 8ED

£425,000 Leasehold



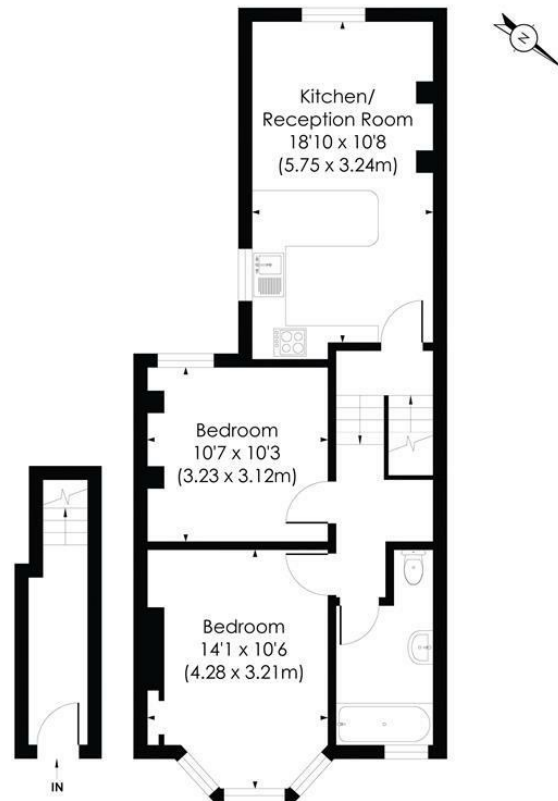
This attractive TWO DOUBLE BEDROOM first floor, Victorian conversion flat is perfectly located for Raynes Park and Wimbledon Chase. There is a lovely open plan kitchen/reception room, two good sized double bedrooms and a modern bathroom. Offered to the market with no onward chain.





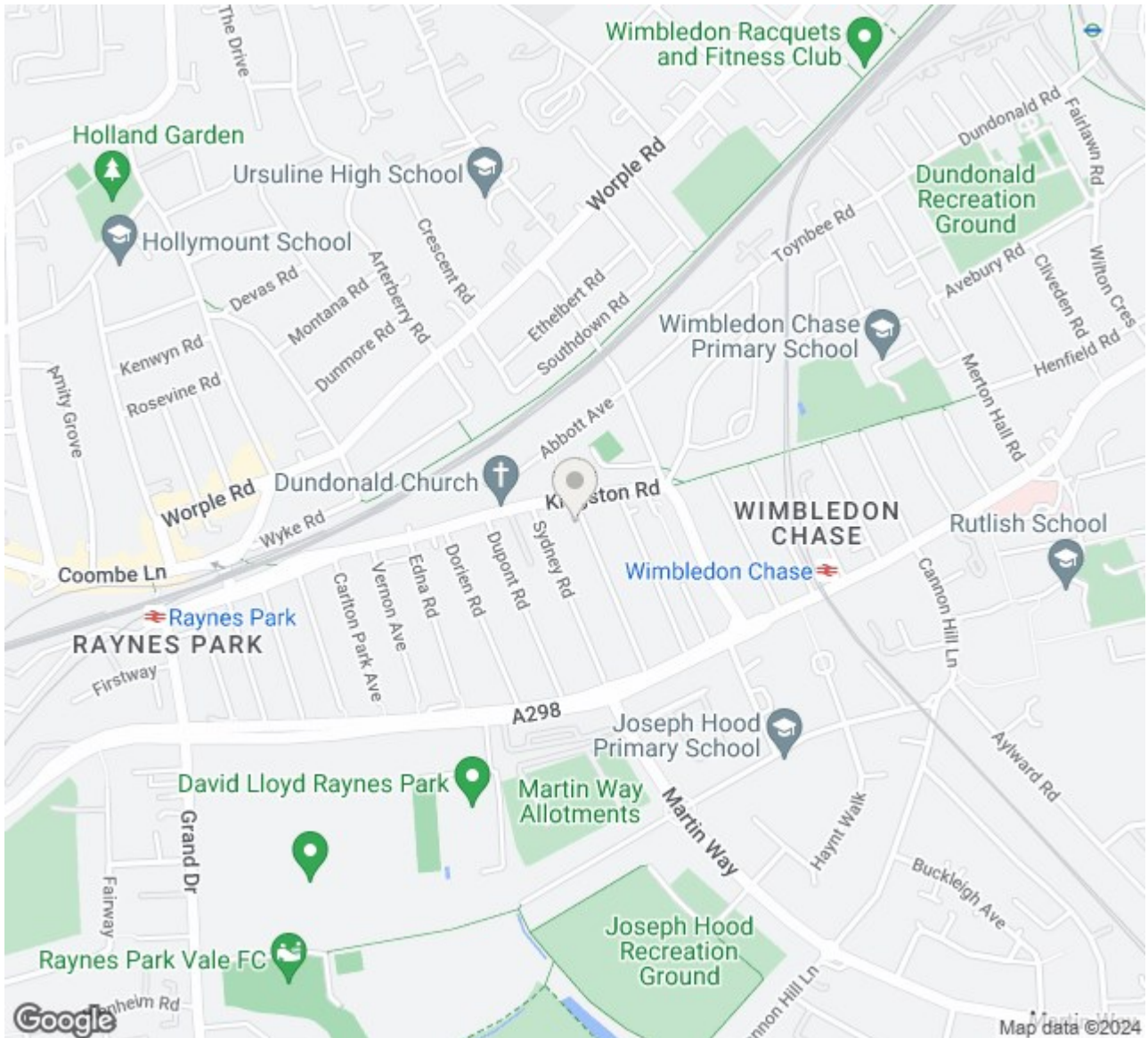
CHESTNUT ROAD, SW20

Approx. Gross Internal Floor Area
663 Sq. ft/61.59 Sq. m




GROUND FLOOR

FIRST FLOOR



- Two Double Bedroom
- First Floor
- Victorian Conversion Flat
- Close to Raynes Park Station
- Close to Wimbledon Chase Station
- No Onward Chain
- Excellent First Time Purchase
- Superb Open Plan Reception Room
- EPC - C
- Council Tax Band - TBC

Energy Efficiency Rating		
	Current	Potential
Very energy efficient - lower running costs		
(92 plus) A		
(81-91) B		
(69-80) C	71	79
(55-68) D		
(39-54) E		
(21-38) F		
(1-20) G		
Not energy efficient - higher running costs		
England & Wales		EU Directive 2002/91/EC 

For Free Mortgage Quote and Best Mortgage Rates, call Ellisons Mortgage Advisor on 0208 944 9595



Although these particulars are believed to be correct, their accuracy is not guaranteed and they do not form part of any contract.

Celebrating 30 years of successful Sales and Lettings in Merton

