

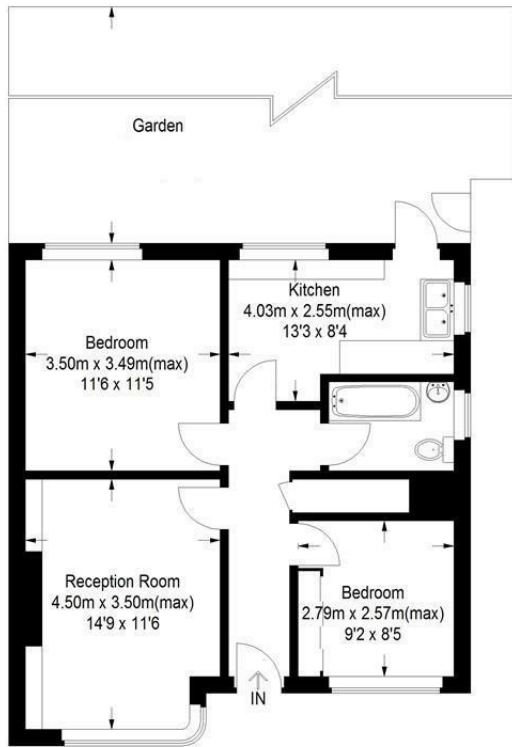
**Richmond Road
West Wimbledon, SW20 0PQ**

£1,850 PCM



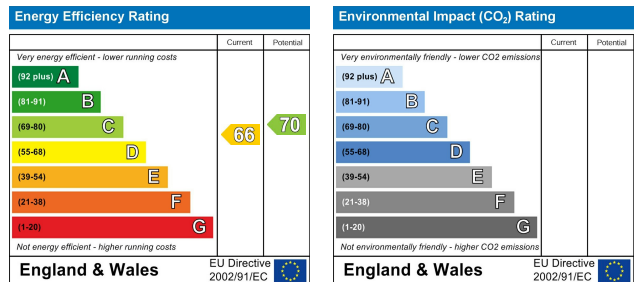
GROUND FLOOR two double bedroom maisonette with **PRIVATE GARDEN**, located approximately 7 minutes walk from Raynes Park train station, shops and local restaurants. Consists of a good size reception room, two double bedrooms both with wardrobes, kitchen with Bosch appliances including **DISHWASHER**, bathroom and built in storage. Wood flooring. Pretty rear garden with lawn, patio and shed.
EPC band D. Council tax band D.

Approximate Gross Internal Area
60.9 sq m / 655 sq ft



This floor plan is for representation purposes only and is not drawn to scale. Whilst every attempt has been made to ensure its accuracy measurements are approximate only and should be checked before making any decisions reliant upon them.
Copyright Bespokeplans.co.uk 2017
(ID364981)

- Cats considered
- Private garden with side access
- Gas central heating
- Double glazing
- Wood flooring
- First months rent in advance
- Five weeks security deposit
- Holding deposit = one weeks rent
- EPC band D
- Council tax band D



For Free Mortgage Quote and Best Mortgage Rates, call Ellisons Mortgage Advisor on 0208 944 9595



Although these particulars are believed to be correct, their accuracy is not guaranteed and they do not form part of any contract.

Celebrating 30 years of successful Sales and Lettings in Merton

