

**West Barnes Lane
West Wimbledon, SW20 0BE**

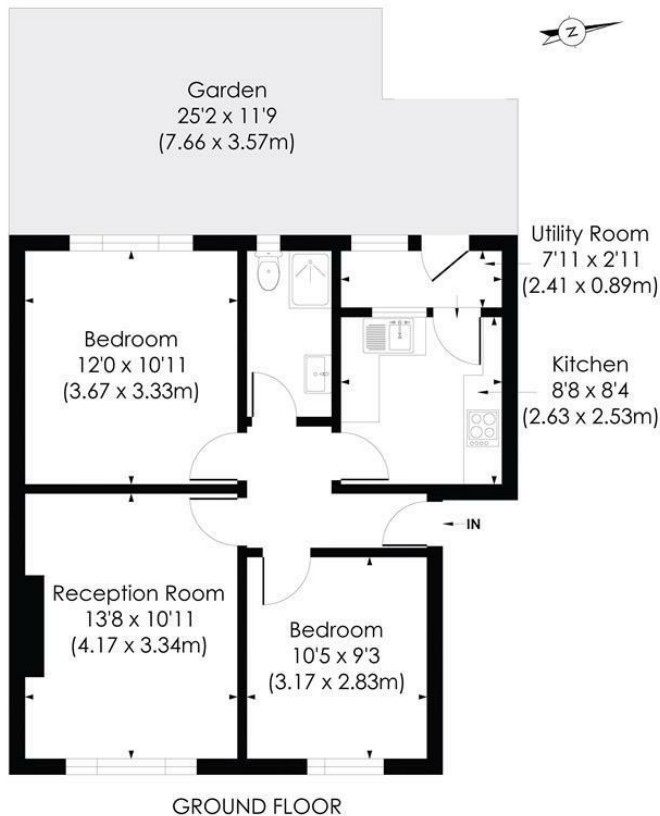
£440,000 Leasehold



EXCELLENT FIRST TIME PURCHASE OR DOWNSIZE MOVE - This beautifully presented TWO DOUBLE BEDROOM, ground floor flat has undergone a full refurbishment throughout and has a superb West facing, private garden. Located only 0.2 Miles from Raynes Park Station and High Street and easy access to Wimbledon and the A3. Extended Lease.

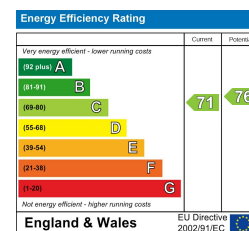
WEST BARNES LANE, SW20

Approx. Gross Internal Floor Area
590 Sq. ft/54.82 Sq. m



© Pixangle Property Marketing Ltd. info@pixangle.com Tel: 0208 870 2118
 This floor plan has been prepared for the purpose of illustration only in accordance with the latest RICS code of measuring practice and is not to scale. All measurements and areas are approximate and whilst every effort has been made to ensure the accuracy of the plan contained here, no responsibility is taken for any error, omission or misstatement.

- Two Double Bedroom - 590 sqft
- Ground Floor Apartment
- Private West Facing Garden
- Extended Lease - 991 Years Remaining
- Newly Fitted Kitchen and Bathroom
- 0.2 Miles to Raynes Park Station
- Excellent First/Second Time Purchase or Downsize Move
- Spacious Reception Room
- EPC - C
- Council Tax Band - C



For Free Mortgage Quote and Best Mortgage Rates, call Ellisons Mortgage Advisor on 0208 944 9595



Although these particulars are believed to be correct, their accuracy is not guaranteed and they do not form part of any contract.

Celebrating 30 years of successful Sales and Lettings in Merton

