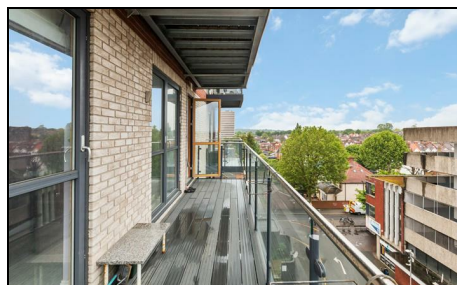


**Blagdon Road
New Malden, KT3 4DZ**

£635,000 Leasehold

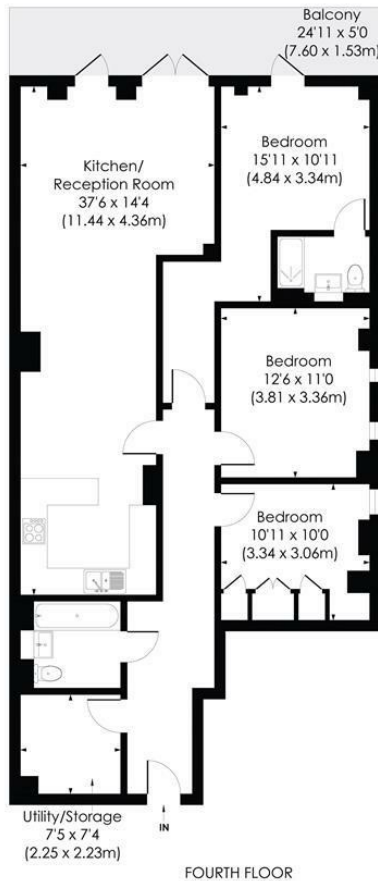


This fantastic and centrally located 1195 sqft (111 sqm) THREE DOUBLE BEDROOM, TWO BATHROOM 4th Floor Modern Apartment has parking, concierge, double balcony, lift access a superb 37'6 ft open plan kitchen/dining/reception room. There are also three good sized bedrooms, spacious hall way, storage/utility room and modern family bathroom.

BLAGDON ROAD, KT3

Approx. Gross Internal Floor Area

1195 Sq. ft/111.00 Sq. m



© Pixangle Property Marketing Ltd. info@pixangle.com Tel: 0208 870 2118



This floor plan has been prepared for the purpose of illustration only in accordance with the latest RICS code of measuring practice and is not to scale. All measurements and areas are approximate and whilst every effort has been made to ensure the accuracy of the plan contained here, no responsibility is taken for any error, omission or misstatement.

- Three Double Bedroom - Two Bathroom
- 1195 sqft - 111sqm Modern Apartment
- 4th Floor With Lift Access
- Double Balcony
- Fantastic Open Plan Kitchen/Reception Room
- Ample Storage
- Parking Space
- Concierge
- EPC - B
- Council Tax Band - D

Energy Efficiency Rating		Current	Potential
<i>Very energy efficient - lower running costs</i>			
A	(91-100)	83	83
B	(81-90)		
C	(69-80)		
D	(55-68)		
E	(39-54)		
F	(21-38)		
G	(1-20)		
<i>Not energy efficient - higher running costs</i>			
England & Wales		EU Directive 2002/91/EC	

For Free Mortgage Quote and Best Mortgage Rates, call Ellisons Mortgage Advisor on 0208 944 9595



Although these particulars are believed to be correct, their accuracy is not guaranteed and they do not form part of any contract.

Celebrating 30 years of successful Sales and Lettings in Merton

