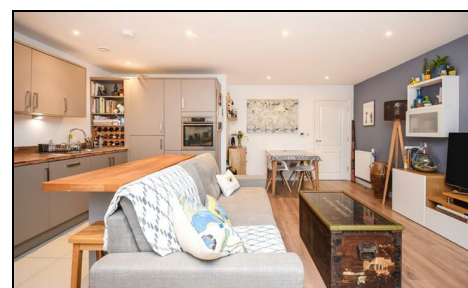


**Kingston Road
Wimbledon Chase, SW20 8BU**

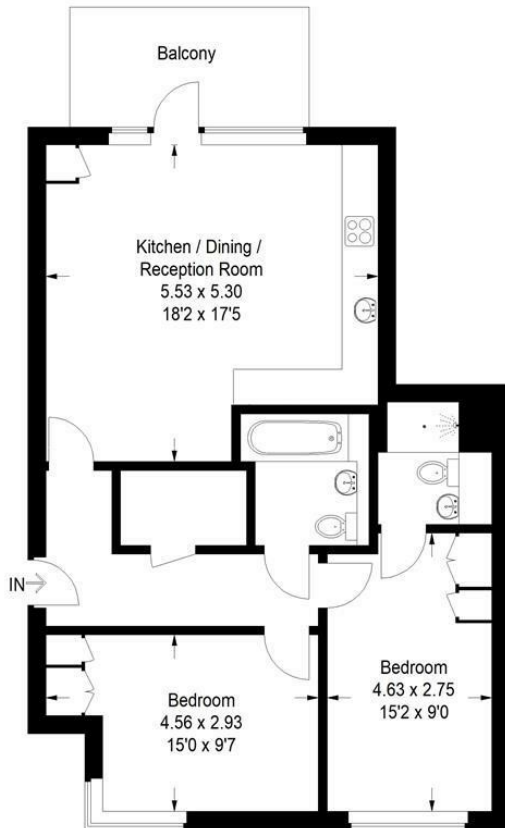
£525,000 Leasehold



This bright and spacious TOP FLOOR, TWO DOUBLE BEDROOM, TWO BATHROOM modern apartment with south facing balcony and allocated parking. Located moments from Wimbledon Chase and local amenities. The property boasts a fantastic master bedroom with large fitted wardrobe and en suite, large second bedroom, modern family bathroom, open plan kitchen/lounge and well maintained communal terrace. Lift access and long lease. CHAIN FREE.

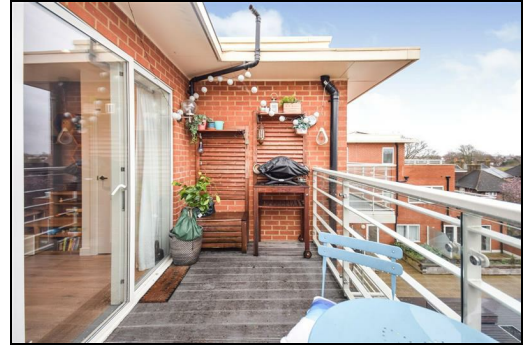
Hero Development, SW20

Approximate Gross Internal Area
73.7 sq m / 793 sq ft



This floor plan is for representation purposes only and is not drawn to scale.
The Gross Internal Area includes outbuildings shown on the plan.
Whilst every attempt has been made to ensure the accuracy of the plan measurements of doors, windows and rooms are approximate only and should be checked before making any decisions reliant upon them.
Copyright Bespokeplans.co.uk (ID 625107)

- Two Double Bedrooms
- Two Modern Bathrooms
- South Facing Balcony
- Top Floor
- Lift Access
- Long Lease
- Secure Allocated Parking
- Communal Terrace
- Close to Wimbledon Chase
- EPC Rating B



Energy Efficiency Rating		Current	Potential
Very energy efficient - lower running costs			
(92 plus) A		91	91
(81-91) B			
(69-80) C			
(55-68) D			
(39-54) E			
(21-38) F			
(1-20) G			
Not energy efficient - higher running costs			
England & Wales		EU Directive 2002/91/EC	

For Free Mortgage Quote and Best Mortgage Rates, call Ellisons Mortgage Advisor on 0208 944 9595



Although these particulars are believed to be correct, their accuracy is not guaranteed and they do not form part of any contract.

Celebrating 30 years of successful Sales and Lettings in Merton

