

Adela Avenue Motspur Park, KT3 6LD

£685,000 Freehold



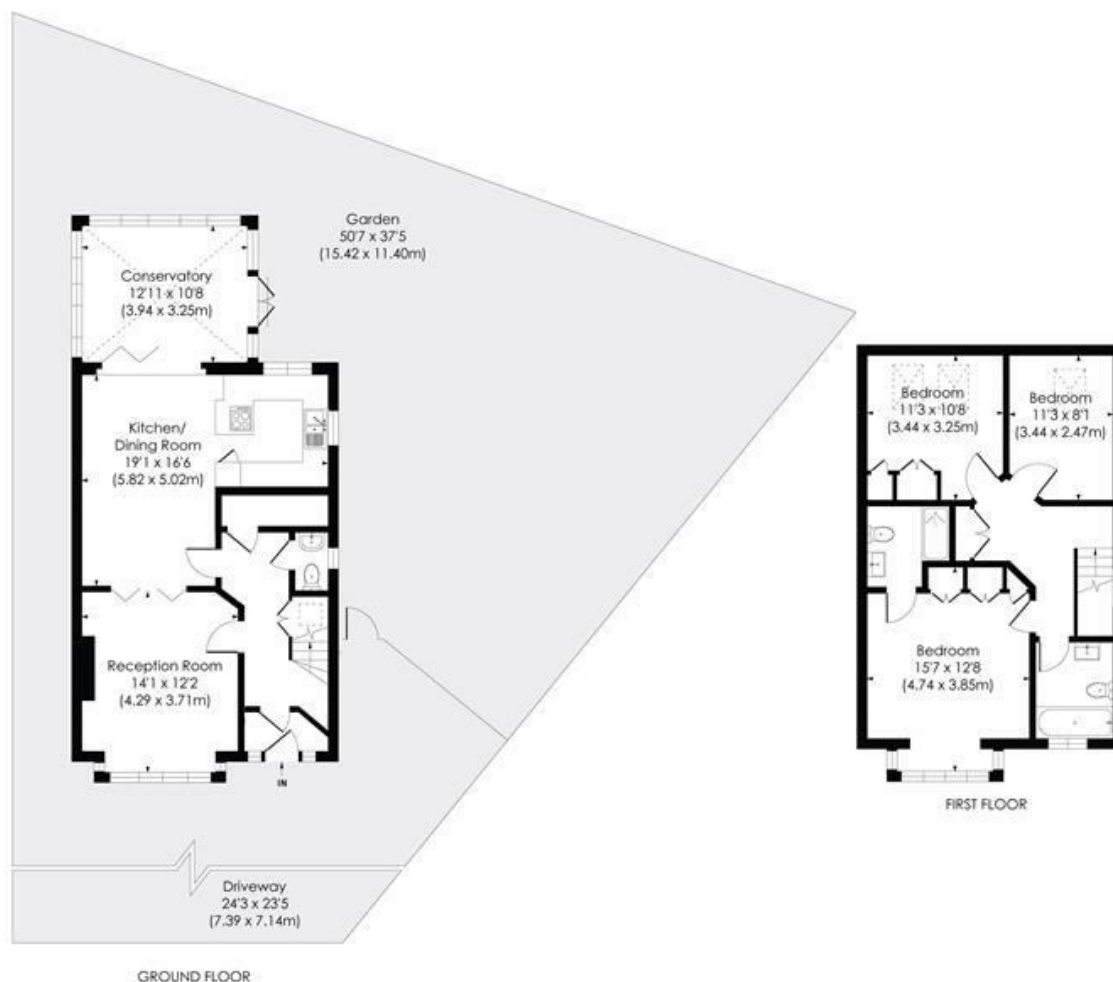
This fantastic (1306 sq.ft - 121.39 sq.m) **THREE BEDROOM, TWO BATHROOM** detached house has a large open plan kitchen/dining room and over 50ft rear garden. Located in one of Motspur Parks most desirable roads only 0.3 Miles to Motspur Park Station, local shops and The Sir Joseph Hood Memorial Playing Fields. Featuring three double bedrooms, two family bathrooms, downstairs w.c, a conservatory and driveway. The property also benefits from underfloor heating throughout the ground floor, a concealed utility room and the potential to extend STPP.



ADELA AVENUE, KT3

Approx. Gross Internal Floor Area

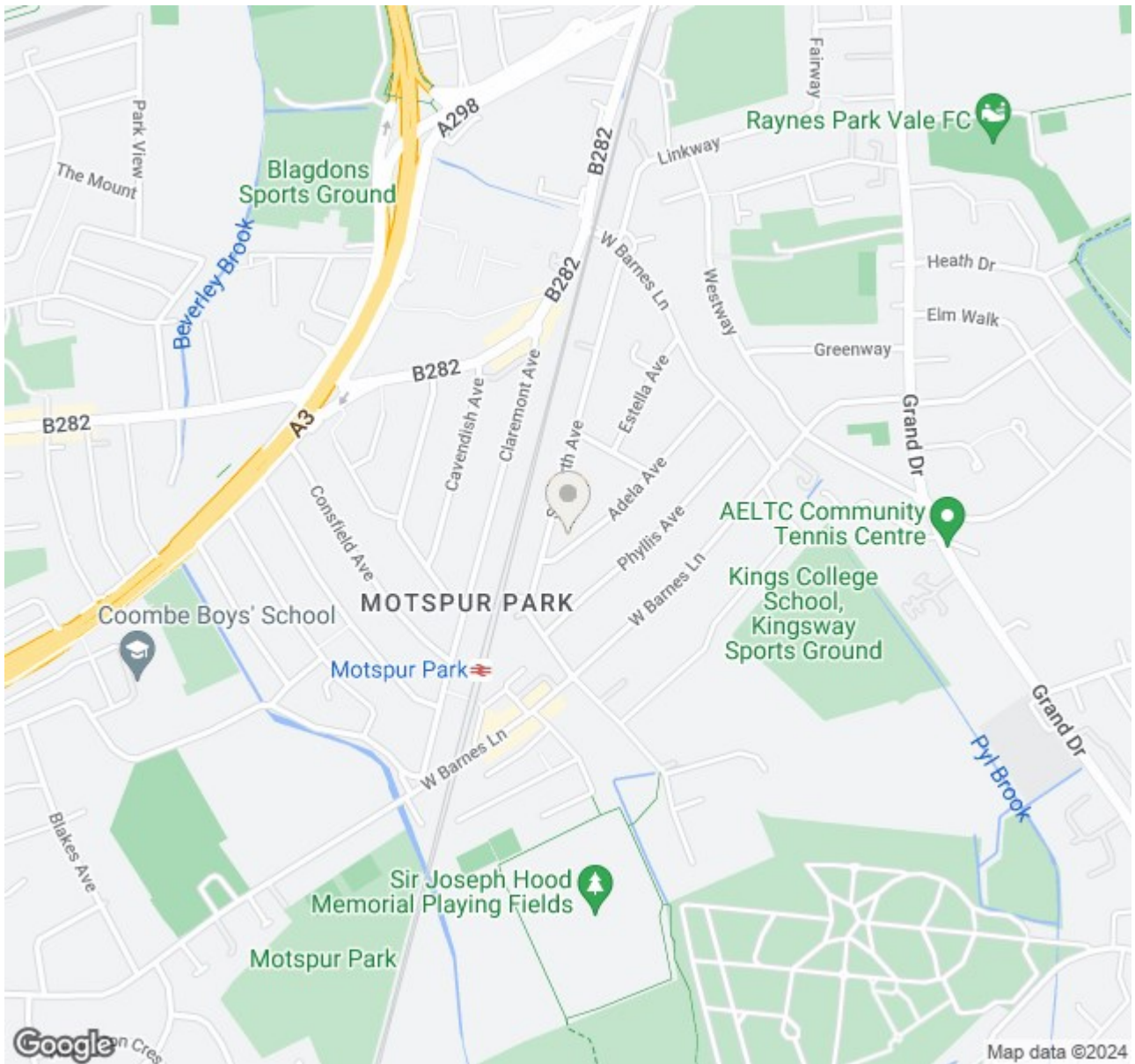
1306 Sq. ft/121.39 Sq. m




© Pixangle Property Marketing Ltd. info@pixangle.com Tel: 0208 870 2118

pixangle
PROPERTY MARKETING

This floor plan has been prepared for the purpose of illustration only in accordance with the latest RICS code of measuring practice and is not to scale. All measurements and areas are approximate and whilst every effort has been made to ensure the accuracy of the plan contained here, no responsibility is taken for any error, omission or misstatement.



- Detached House
- Three Double Bedrooms
- Two Bathrooms
- 50'7 Rear Garden
- Potential To Extend STPP
- Off Street Parking
- Downstairs WC
- BUYER INCENTIVE - £3k furniture voucher and professional clean of the property
- Council Tax Band - E
- EPC Rating - C

Energy Efficiency Rating		
	Current	Potential
Very energy efficient - lower running costs		
(92 plus) A		
(81-91) B		
(69-80) C	70	81
(55-68) D		
(39-54) E		
(21-38) F		
(1-20) G		
Not energy efficient - higher running costs		
England & Wales	EU Directive 2002/91/EC 	

For Free Mortgage Quote and Best Mortgage Rates, call Ellisons Mortgage Advisor on 0208 944 9595



Although these particulars are believed to be correct, their accuracy is not guaranteed and they do not form part of any contract.

Celebrating 30 years of successful Sales and Lettings in Merton

